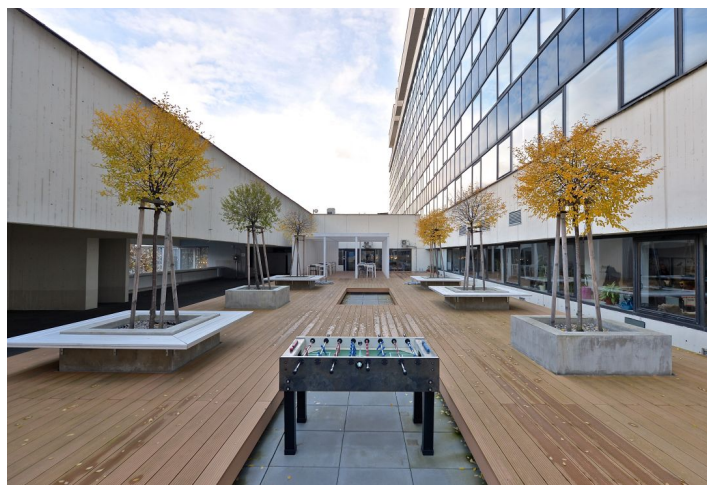




## Office building

Prague 7, Holešovice, Dělnická

Rented



**Office building**

Prague 7, Holešovice, Dělnická

**Rented**

<b>Service price</b>	85 CZK monthly per m <sup>2</sup>
<b>Total building area</b>	19 600 m <sup>2</sup>
<b>Tenant consumption</b>	—
<b>Parking</b>	90 EUR
<b>Parking service charges</b>	—
<b>Parking ratio</b>	—
<b>Certification</b>	—
<b>PENB</b>	G
<b>Reference number</b>	15650

Administrative building with office space for lease situated in Prague 7 – Holešovice. Flexible space for open plan or individual offices. Terraces offer outdoor seating areas. Reception, lift, lobbies and office floors have recently been refurbished in a most stylish and contemporary way.

**Location:**

The building is easy accessible by car and public transport – within walking distance of the Nádraží Holešovice and Vltavská (line C) metro stations, close to tram stops. Number of primary transportation routes, including access to the D1 and D8 (Berlin) highways.

**Features and Services:**

- 5 new high speed lifts
- 24-hour security and CCTV
- Reconstructed public areas with ventilated lobbies
- Secure storage with dedicated loading areas
- Highly flexible floor plates offering up to 2,500 m<sup>2</sup>
- Onsite property management team
- Excellent open plan and cellular office configurations
- Openable windows
- Proximity card control access systems
- Individually controlled cooling in designated office zones
- Perimeter heating
- 370 parking spaces

Rental and service charges listed without VAT. Lessee pays no commission.







## Office building

Prague 7, Holešovice, Dělnická

Rented

