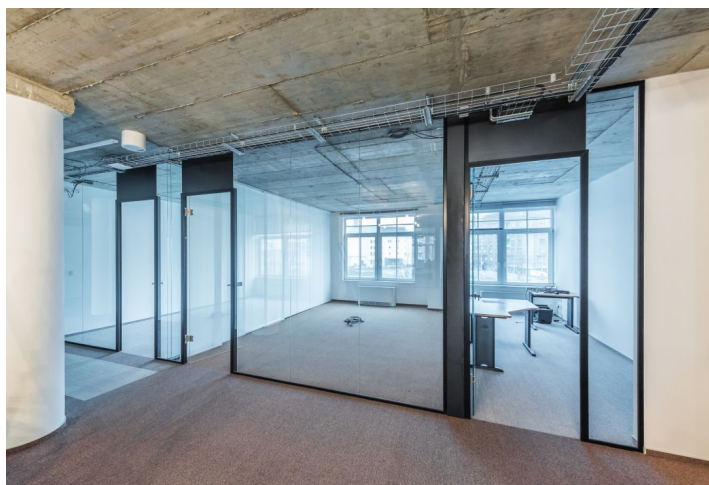
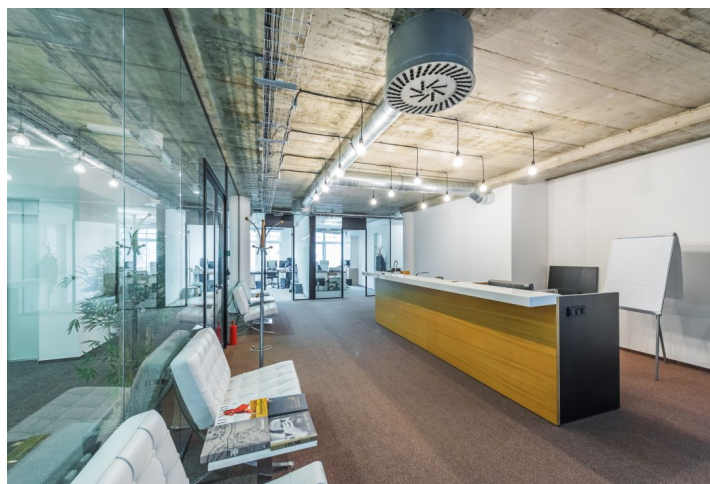
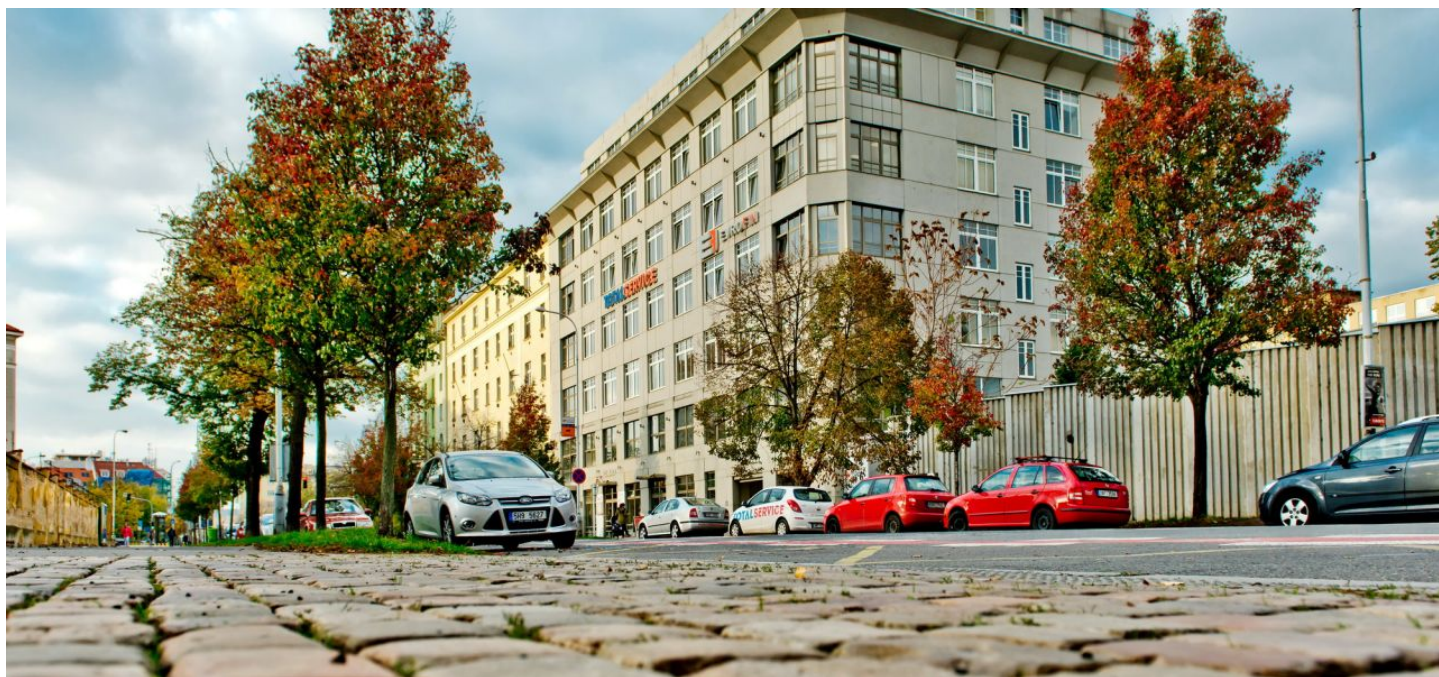




Office building

Prague 7, Holešovice, U Uranie

Rented





Office building

Prague 7, Holešovice, U Uranie

Rented

| | |
|-------------------------|------------------------------------|
| Service price | 110 CZK monthly per m ² |
| Total building area | 4 000 m ² |
| Tenant consumption | — |
| Parking | 85 EUR |
| Parking service charges | — |
| Parking ratio | — |
| Certification | — |
| PENB | C |
| Reference number | 15651 |

Seven storey office building with two underground garage floors and central reception on ground floor offers office space for lease located in Holešovice.

The area already houses multiple companies from a wide range of industries attracted by its unique business environment created by the combination of office, commercial and residential use in a mix of newly developed as well as stylishly refurbished industrial buildings along the riverbank whilst still being within very close proximity to Prague city center.

Location:

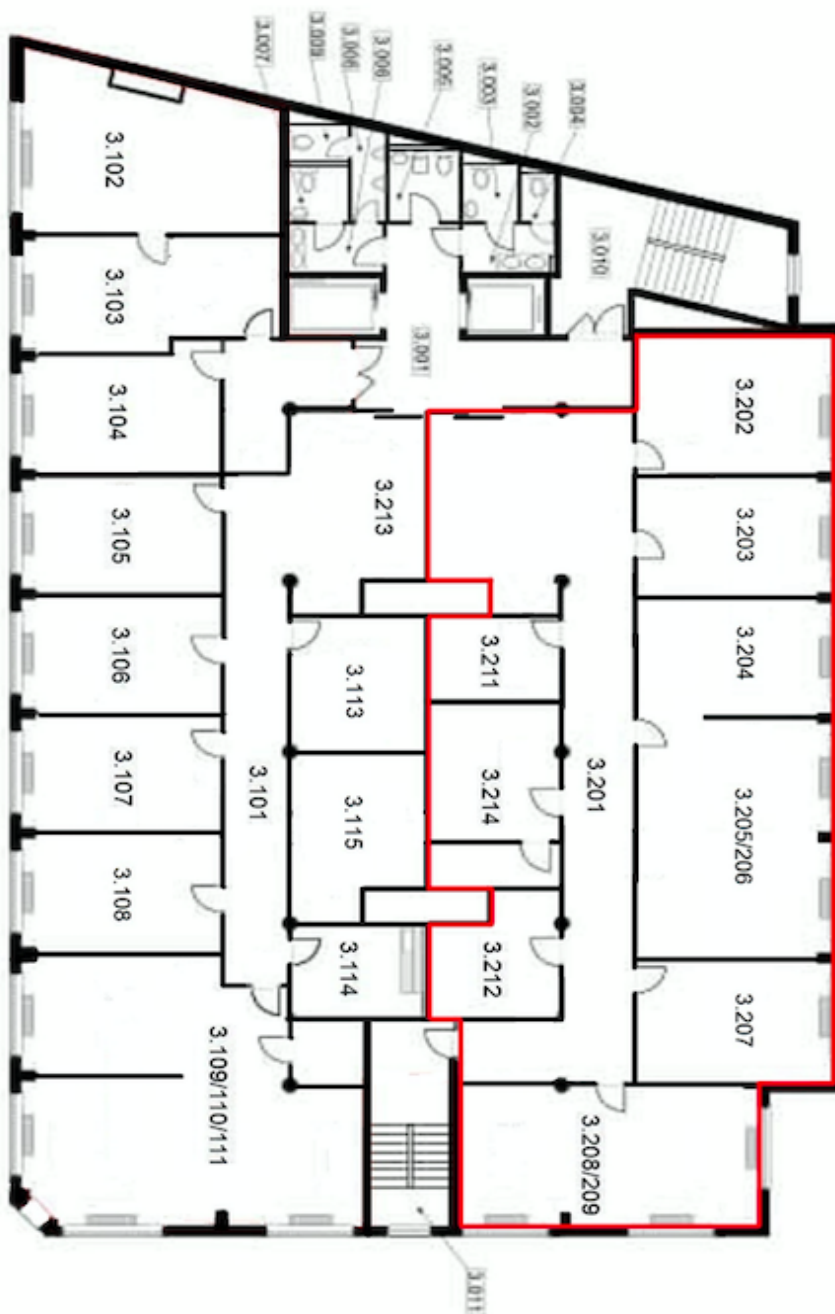
Administrative building is situated right behind Vltava river. Good accessibility by public transportation and car – close to the metro stations Vltavská (line C) and Palmovka (line B), tram stops (Dělnická or Maniny) are few minutes of walk. Number of primary transportation routes, including access to the D1 and D8 (Berlin) highways.

Features and Services:

- Representative reception
- 24/7 security, entry card system
- Raised floors
- Air conditioning (fan-coils)
- Boardroom
- A series of all-glass partitions
- Kitchenette and toilets
- Server room
- Photo studio
- 2 passenger lifts
- Wheelchair access
- Restaurant in the building
- Parking for visitors in underground garages

Rental and service charges listed without VAT. Lessee pays no commission.





4NP