

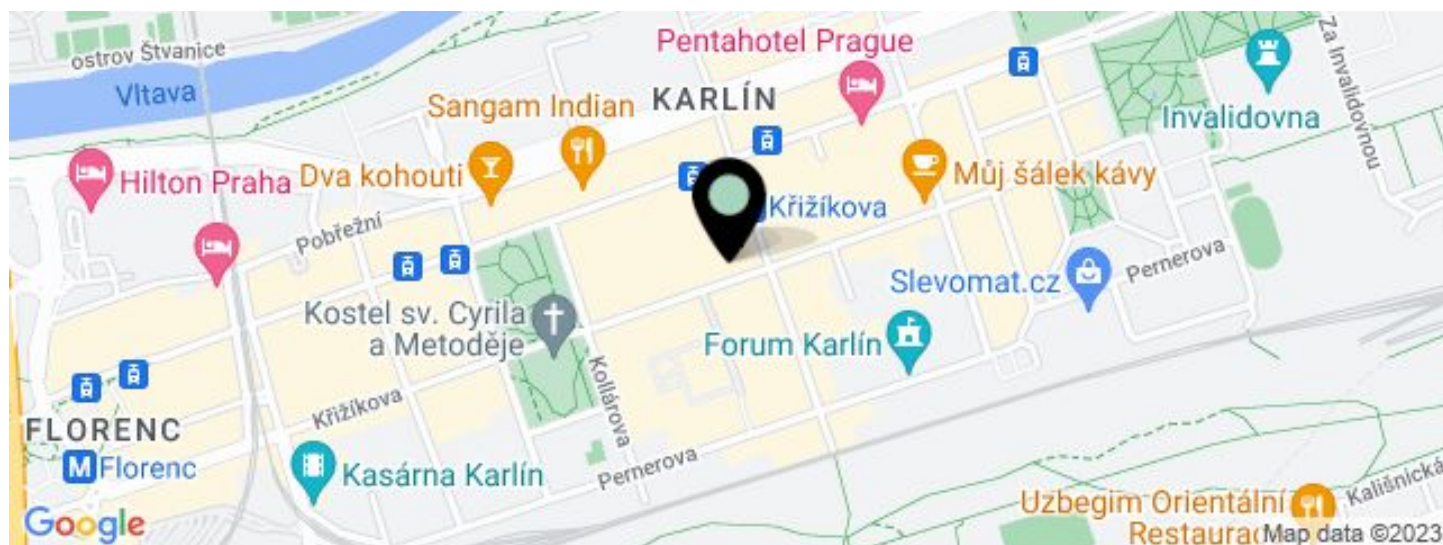


Office building

1347 m², Prague 8, Karlín, Křižíkova

€ 17.00 / m² | CZK 428 / m²



**Office building****€ 17.00 / m² | CZK 428 / m²**1 347 m², Prague 8, Karlín, Křižíkova

UNIT	AVAILABLE AREA	SERVICES	PARKING	MONTHLY RENT
Office space, 3rd floor	467 - 942 m ²	140 CZK monthly per m ²	EUR 130 / pp / month	€ 17 / m ²
Office space, 1st floor	429 - 880 m ²	140 CZK monthly per m ²	EUR 130 / pp / month	€ 17 / m ²



Office building

1 347 m², Prague 8, Karlín, Křižíkova

€ 17.00 / m² | CZK 428 / m²

Service price	140 CZK monthly per m ²
Total building area	9 154 m ²
Tenant consumption	—
Parking	130 EUR
Parking service charges	—
Parking ratio	—
Certification	—
PENB	G
Reference number	15653

This administrative building, which originated from the revitalization of an industrial space, offers office space for lease in a popular location of Prague 8 - Karlín. The area of the former factory from the 19th century has been fully reconstructed. The creator of the project is the famous architect Ricardo Bofill; the building was awarded "Building of the Year 2001."

Location:

Very good accessibility by car and public transport – the Křižíkova metro station (line B) and a tram stop are just a few minutes on foot from the space; easy connection to the D8 highway, Prague ring road and the city center.

Features and Services:

- Representative reception
- 24/7 security service
- Modern lifts
- Magnetic card access
- Air-conditioning
- Lowered ceilings with integral lighting
- Central heating
- Fire alarm system
- Underground parking

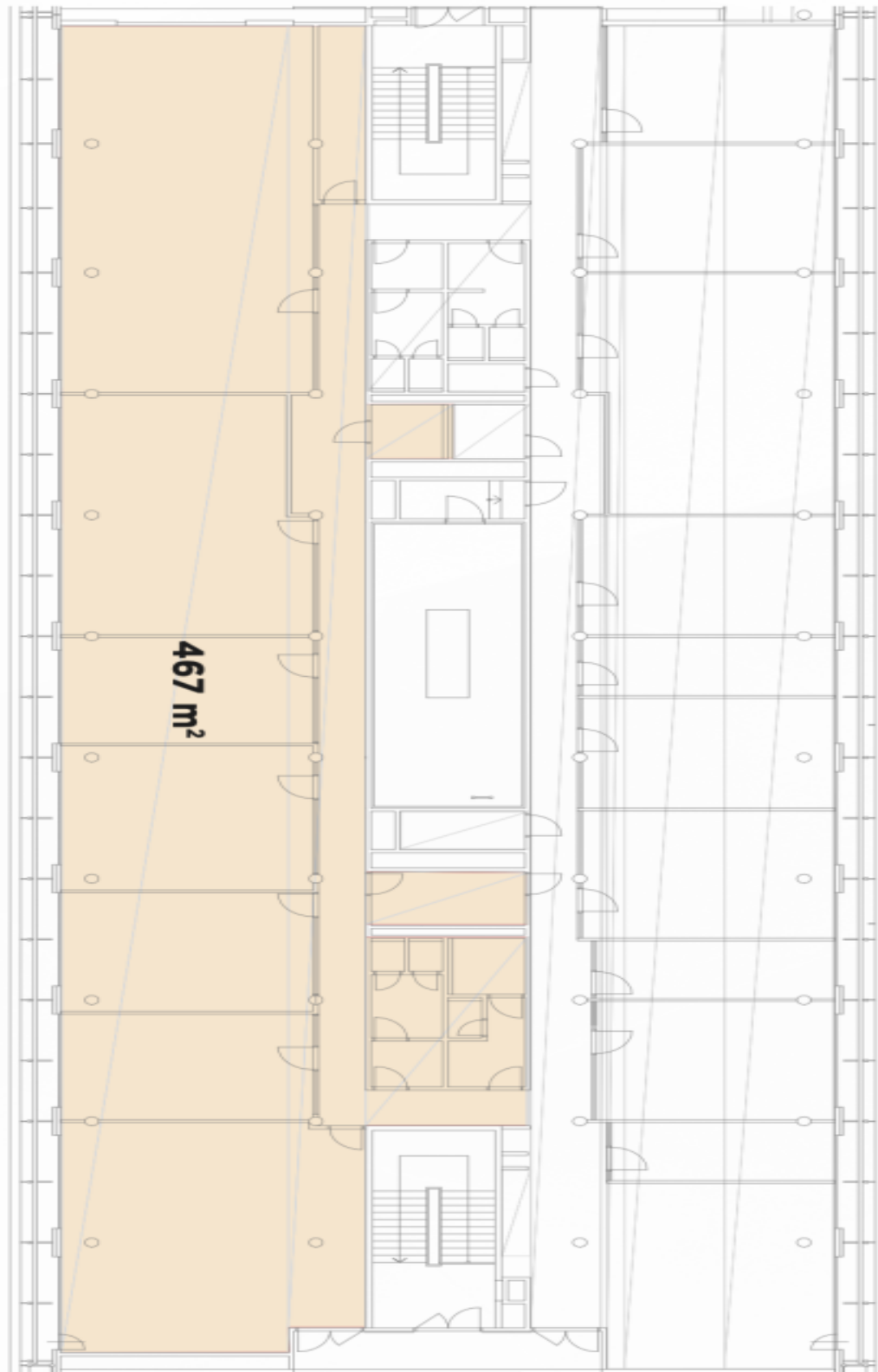
Rental and service charges are listed without VAT. Lessee pays no commission.



Office building

1347 m², Prague 8, Karlín, Křižíkova

€ 17.00 / m² | CZK 428 / m²





Office building

1 347 m², Prague 8, Karlín, Křižíkova

€ 17.00 / m² | CZK 428 / m²

