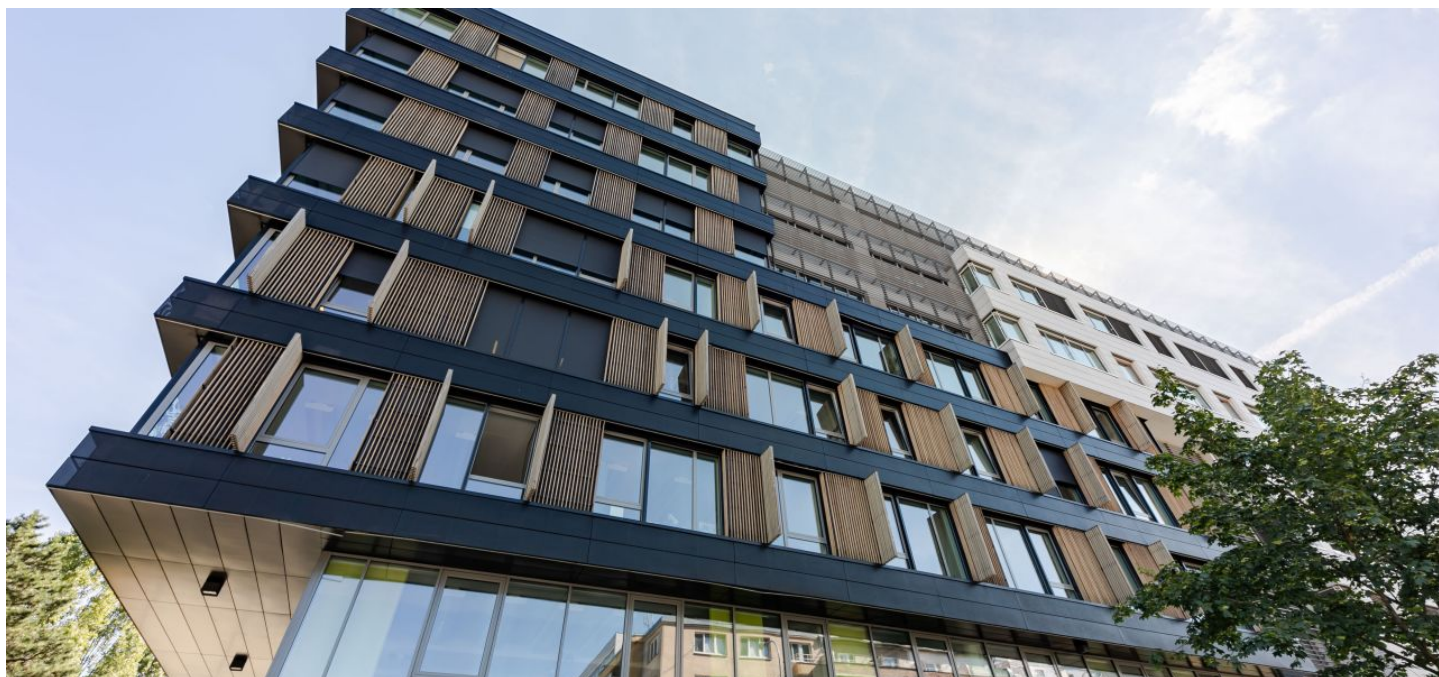


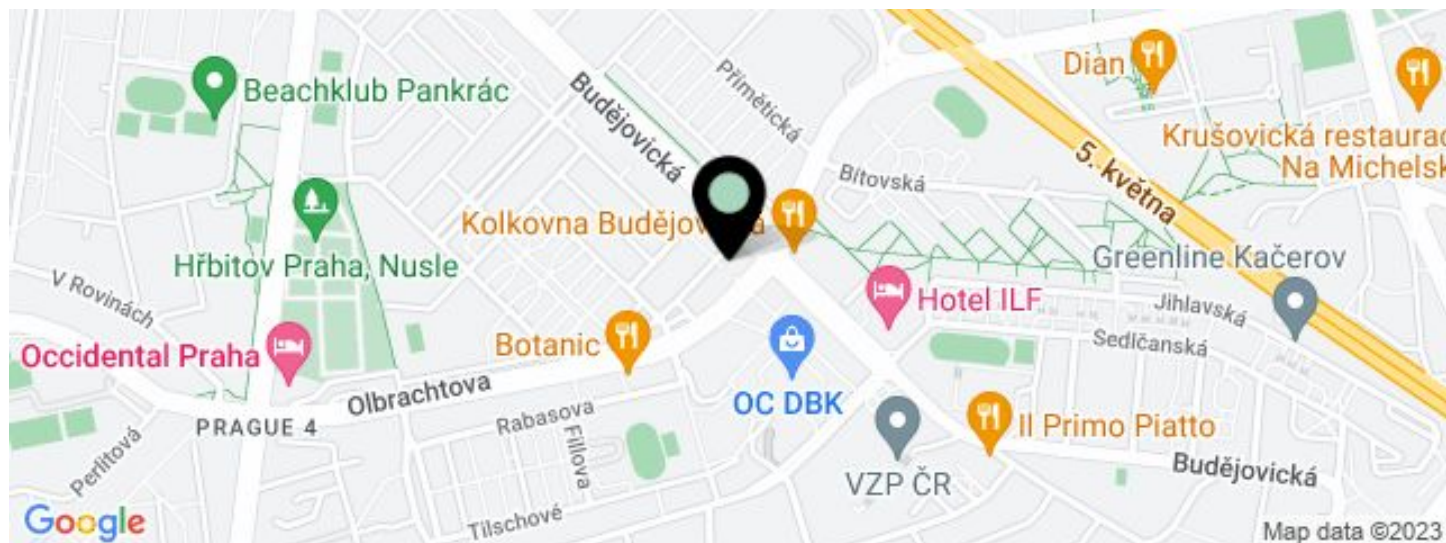


Office building

166 m², Prague 4, Michle, Budějovická

€ 16.50 / m² | CZK 414 / m²



**Office building****€ 16.50 / m² | CZK 414 / m²**166 m², Prague 4, Michle, Budějovická

UNIT	AVAILABLE AREA	SERVICES	PARKING	MONTHLY RENT
Office space, 2nd floor	166 m ²	180 CZK monthly per m ²	EUR 110 / ps / month	€ 16.50 / m ²

**Office building**166 m², Prague 4, Michle, Budějovická**€ 16.50 / m² | CZK 414 / m²**

Service price	180 CZK monthly per m ²
Total building area	4 300 m ²
Tenant consumption	—
Parking	110 EUR
Parking service charges	—
Parking ratio	—
Certification	—
PENB	G
Reference number	15700

Administrative building with office space for lease situated in Prague 4.

The building has an "A" level certificate of energy efficiency. Modern premises are available with quality fit-outs – glass partitions, load-bearing carpeting and available immediately.

Location:

The building is easily accessible by car and public transport – in vicinity of the Budějovická metro station (line C) and bus stops. The location offers excellent connection to the D1 highway and easy access to city center.

Features and Services:

- Air conditioning
- Double floor
- Lowered ceiling
- Telephone network (option)
- Computer network (option)
- Heavy current
- Smoke detectors
- Reception
- Guards
- Openable windows
- Elevators
- Magnetic card entry
- Building management in the building

Rental and service charges listed without VAT. Lessee pays no commission.