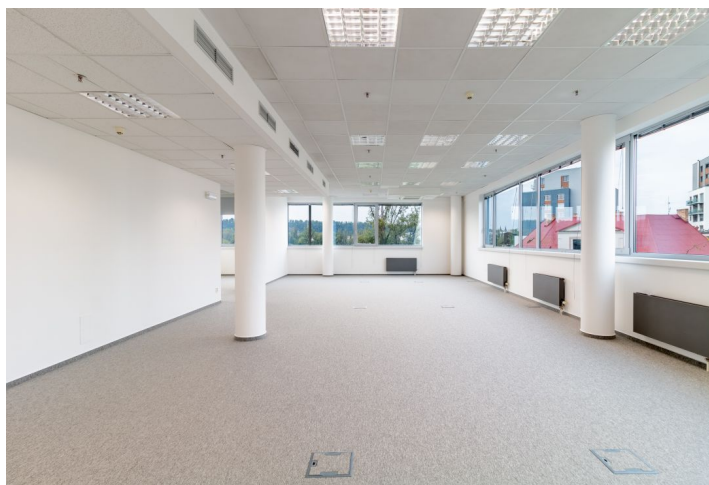
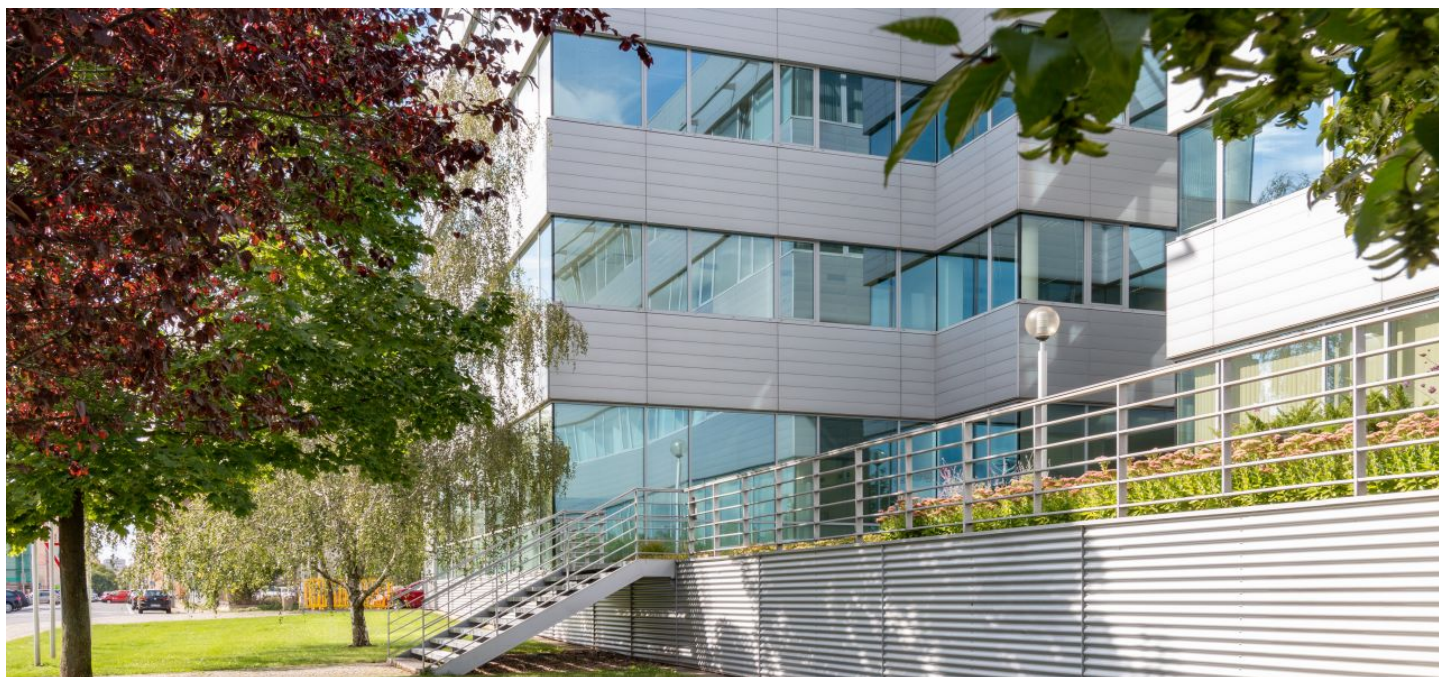


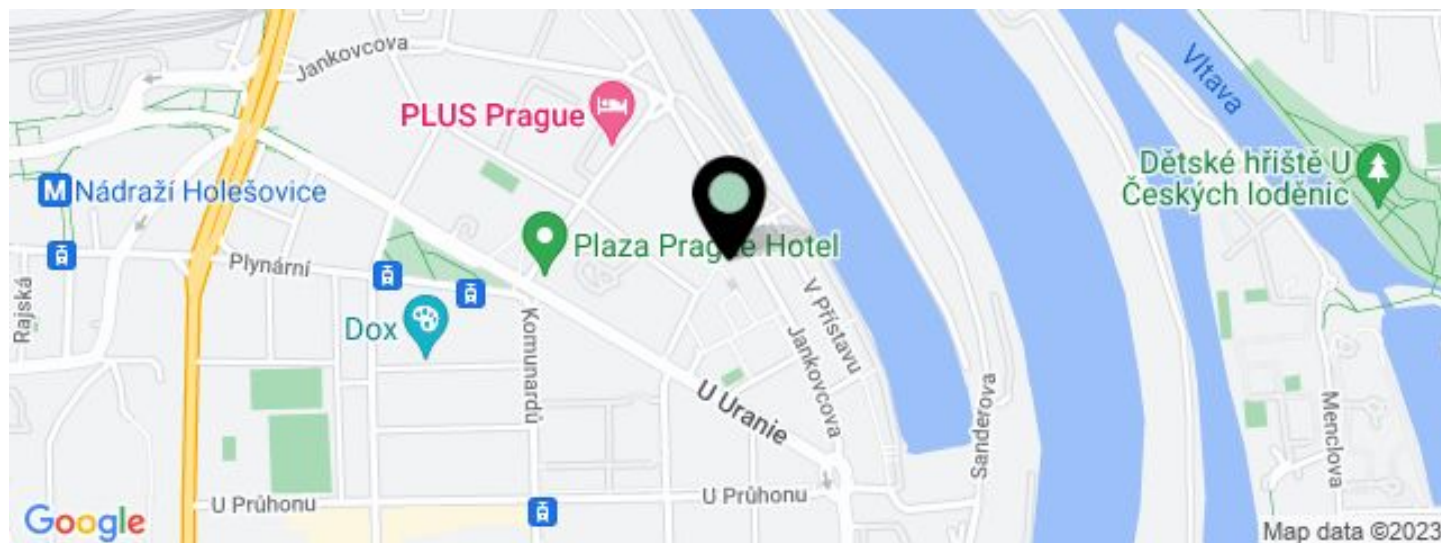


Office building

€ 15.50 / m² | CZK 389 / m²

2 910 m², Prague 7, Holešovice, Jankovcova



**Office building****€ 15.50 / m² | CZK 389 / m²**2 910 m², Prague 7, Holešovice, Jankovcova

UNIT	AVAILABLE AREA	SERVICES	PARKING	MONTHLY RENT
Building B, Office space, 3rd floor	829 m ²	135 CZK monthly per m ²	EUR 140 / ps / month	€ 15.50 / m ²
Building B, Office space, 2nd floor	702 m ²	135 CZK monthly per m ²	EUR 140 / pp / month	€ 15.50 / m ²
Building B, Office space, 2nd floor	478 m ²	135 CZK monthly per m ²	EUR 140 / pp / month	€ 15.50 / m ²
Building A, Office space, 6th floor	118 m ²	135 CZK monthly per m ²	EUR 140 / ps / month	€ 15.50 / m ²
Building A, Office space, 3rd floor	493 m ²	135 CZK monthly per m ²	EUR 140 / ps / month	€ 15.50 / m ²
Building A, Office space, 4th floor	290 m ²	135 CZK monthly per m ²	EUR 140 / ps / month	€ 15.50 / m ²
Sublease, Building A, Office space, 13th floor 500 - 550 m ²		135 CZK monthly per m ²	EUR 110 / ps / month - parking service charges 250 CZK	€ 13.50 / m ²



Office building

2 910 m², Prague 7, Holešovice, Jankovcova

€ 15.50 / m² | CZK 389 / m²

Service price	135 CZK monthly per m ²
Total building area	21 000 m ²
Tenant consumption	—
Parking	140 EUR
Parking service charges	—
Parking ratio	—
Certification	—
PENB	B
Reference number	15705

Office complex in Prague 7 offers office space for lease. The building, which has received international BREEAM certification at the Very Good level, consists of two towers - building A with 19 floors and the lower building B with 4 floors. The complex has a central reception, 24-hour security, underground parking and modern lifts. The complex also includes a restaurant and a café.

Location:

Great accessibility by public transport and by car - close to metro stations Vltavská (line C) and Palmovka (line B), and just a few minutes walk to tram stops Dělnická and Maniny.

Features and Services:

- Central reception
- 24-hour security service
- Air-conditioning
- CCTV
- Modern elevators
- Carpets and tiles on the floors
- Storage space
- Underground garage parking
- Restaurant and café

Rental and service charges listed without VAT. Lessee pays no commission.