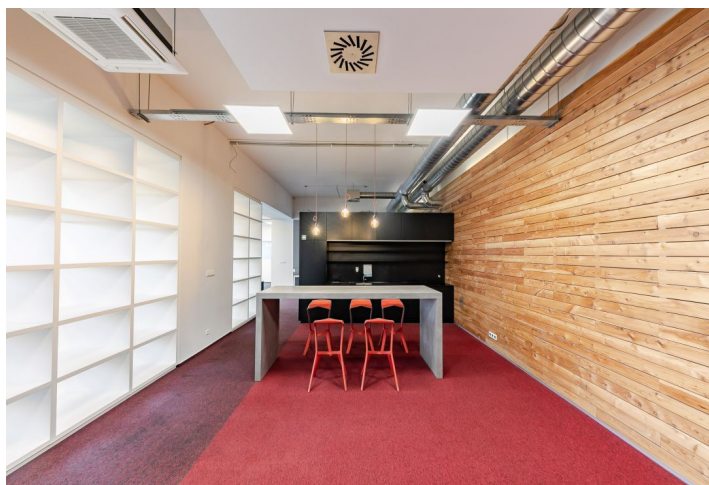


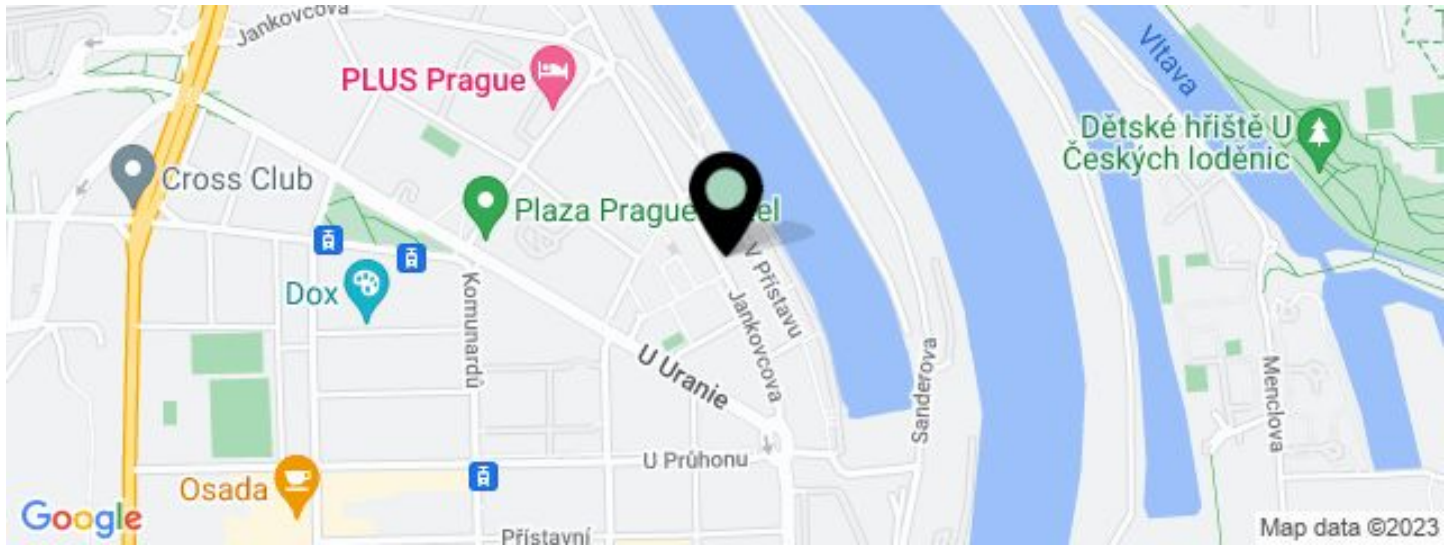


Office building

299 m², Prague 7, Holešovice, Jankovcova

€ 12.00 / m² | CZK 301 / m²



**Office building****€ 12.00 / m² | CZK 301 / m²**299 m², Prague 7, Holešovice, Jankovcova

UNIT	AVAILABLE AREA	SERVICES	PARKING	MONTHLY RENT
Building A, Office space, 7th floor	299 m ²	85 CZK monthly per m ²	110 EUR / ps / month	€ 12 / m ²

**Office building**299 m², Prague 7, Holešovice, Jankovcova**€ 12.00 / m² | CZK 301 / m²**

Service price	85 CZK monthly per m ²
Total building area	21 000 m ²
Tenant consumption	—
Parking	110 EUR
Parking service charges	—
Parking ratio	—
Certification	—
PENB	G
Reference number	15706

An administrative complex including 5 buildings with 20,000 sq. m of office space and 5,000 sq. m of warehouse space. 24-hour security, 2 reception areas, 6 passenger lifts and 1 cargo lift.

Location:

In close vicinity of tram stops with direct connections to metro stations Palmovka (line B), Nadraží Holešovice and Vltavská (line C). Good access by car, connection to D1, D8, D10 highways.

Features and Services:

- 2 receptions
- 24-hour security
- Air condition
- Internet and telephone connection
- Carpets
- Lighting in lowered ceilings
- 6 passenger lifts
- 1 cargo lift
- Separate toilets and kitchenette available
- Parking on site
- Warehouse for lease

Rental and service charges are listed without VAT. Lessee pays no commission.