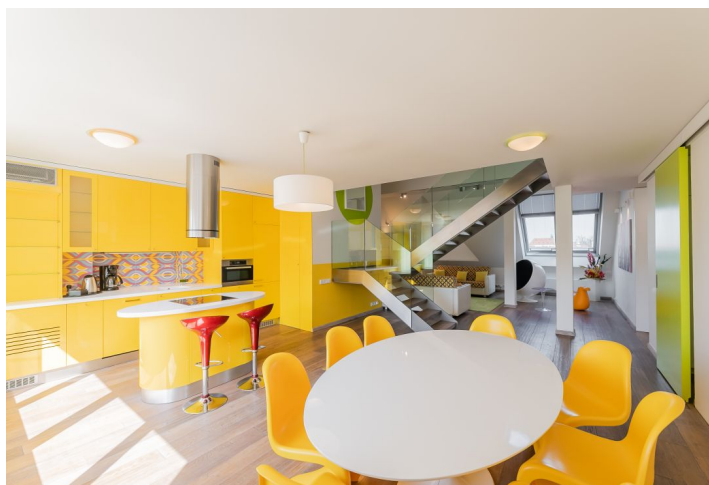
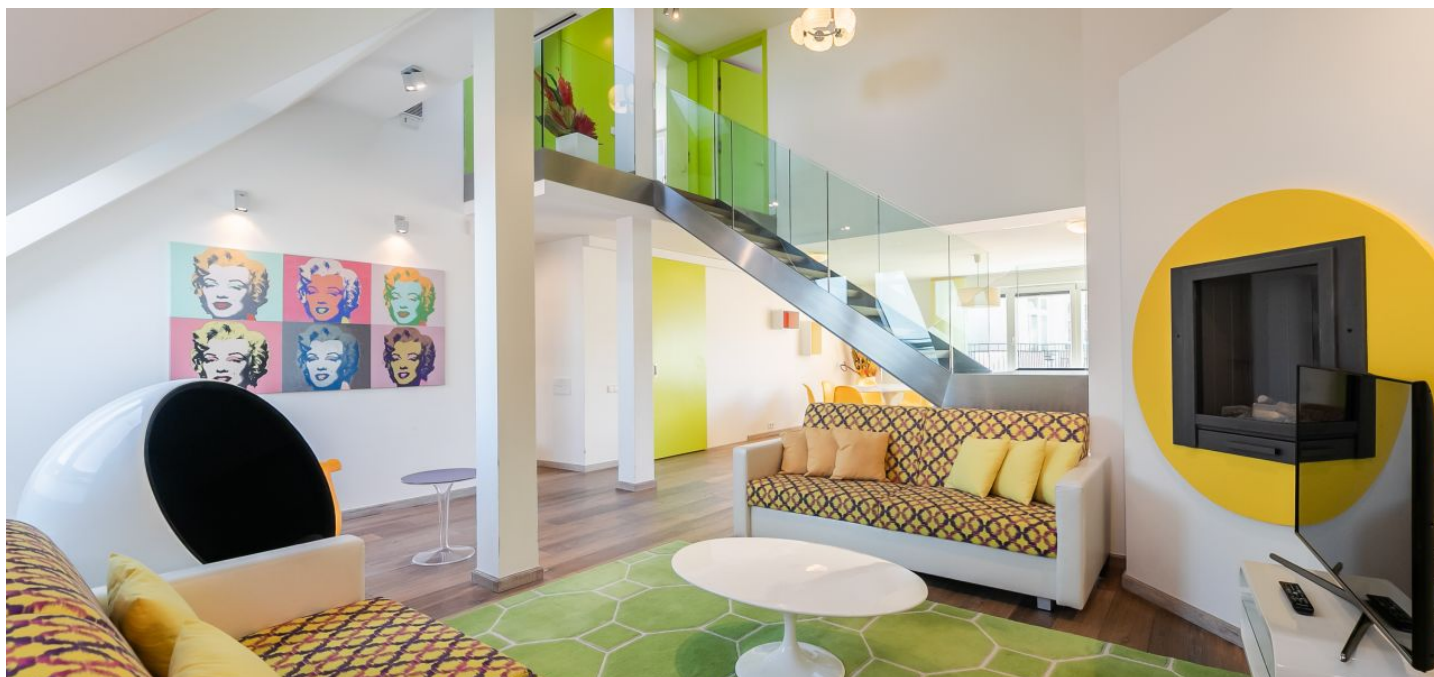




Apartment Three-bedroom (4+kk)

Rented

178 m², Prague 1, Nové Město, Navrátilova





Apartment Three-bedroom (4+kk)

Rented

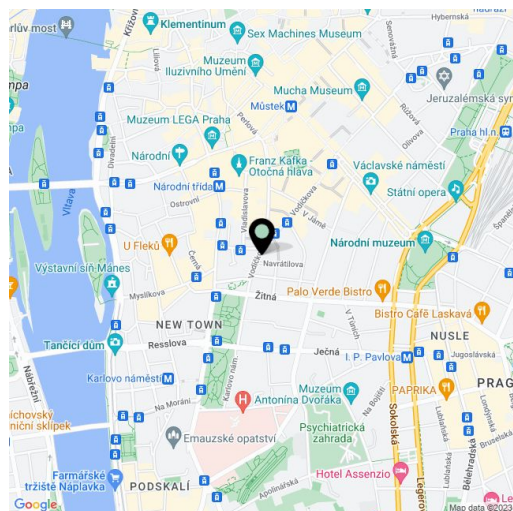
178 m², Prague 1, Nové Město, Navrátilova

Total area	178 m ²
Parking	-
Cellar	-
PENB	G
Reference number	15729
Available from	Immediately

Contemporary design attic flat for rent. This air-conditioned furnished 2-bedroom 2-bathroom split-level flat with a spacious open gallery on the 5th floor of a traditional building with a lift in a quiet street in an attractive central location within walking distance of Wenceslas and Karlovo Squares with metro and tram connections.

The lower level includes living room with a fireplace and a fully fitted open kitchen, two bedrooms - one of them with a large walk-in closet, bathroom (big bath tub, sink, toilet), guest toilet, and entry hall. The upper floor features a gallery suitable for an office, shower bathroom, and toilet.

Wood floors, security door, atelier windows, gas boiler, bidet showers, central switch, alarm, audio entry phone. Common building charges CZK 1000/person/month. Utilities are billed separately.



* Area of the unit according to the Civil Code. The area consists of the sum total area of the entire unit bounded by perimeter walls.