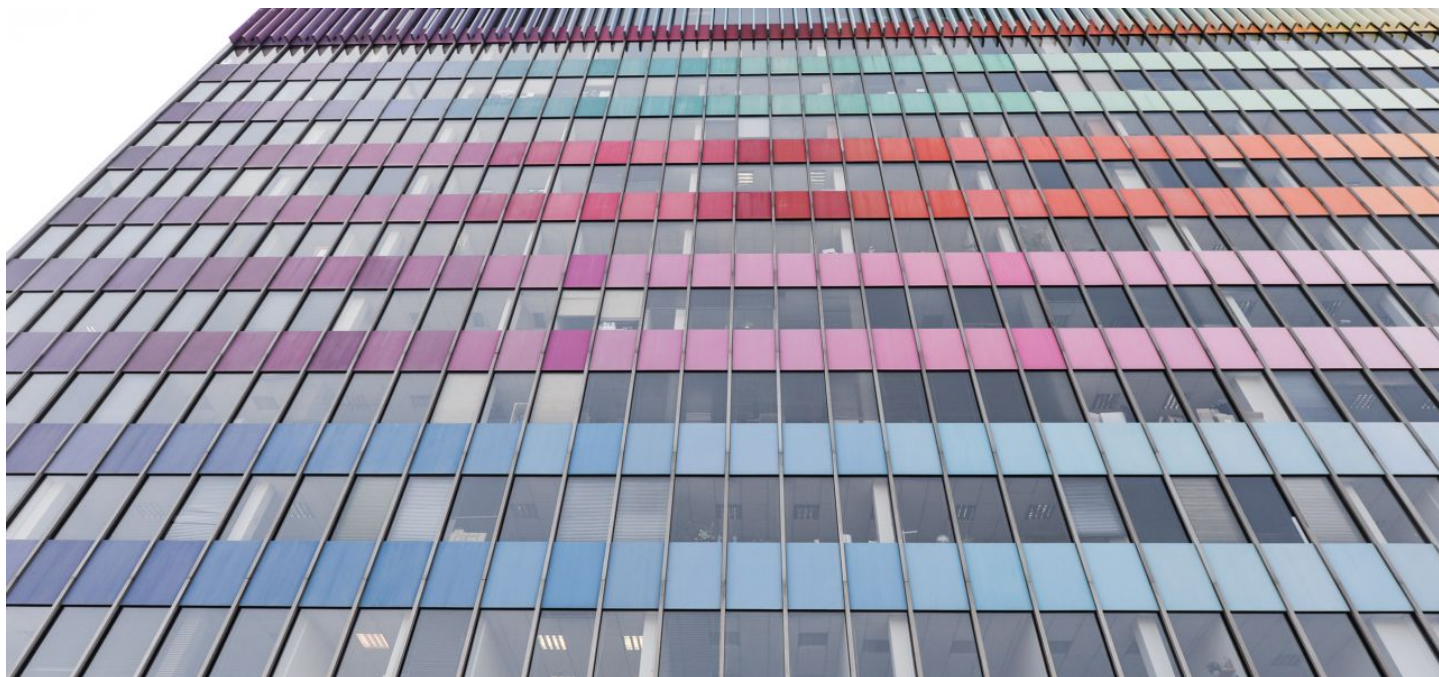


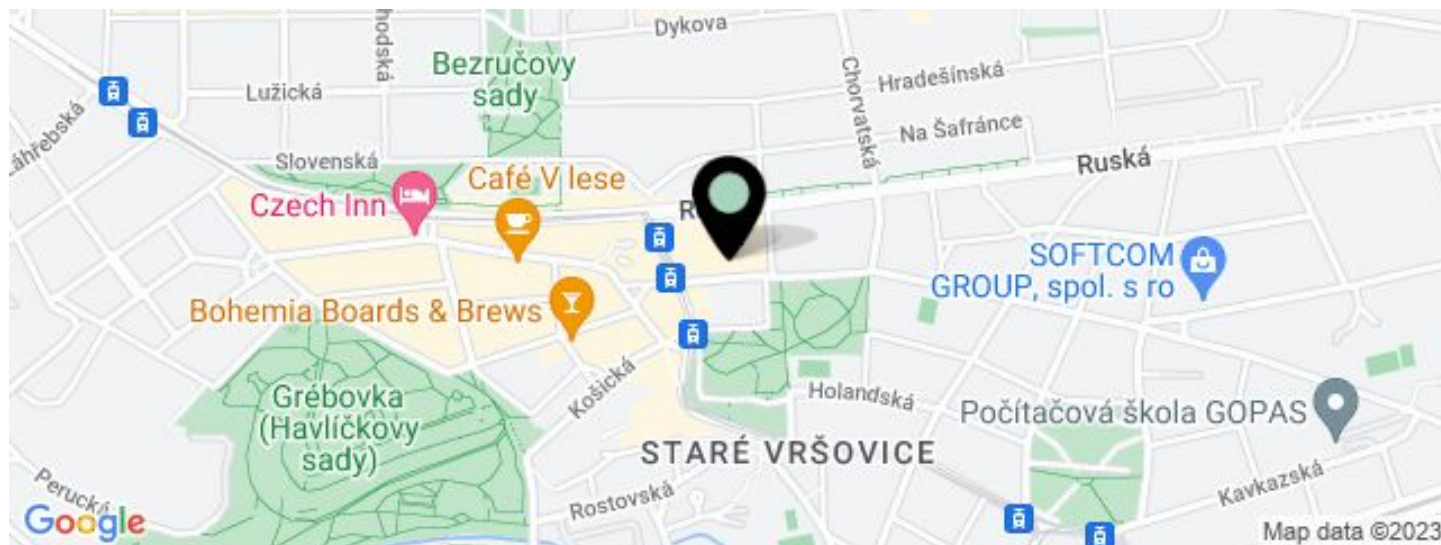


Office building

171 m², Prague 10, Vršovice, Kodaňská

€ 10.36 / m² | CZK 260 / m²



**Office building****€ 10.36 / m² | CZK 260 / m²**171 m², Prague 10, Vršovice, Kodaňská

UNIT	AVAILABLE AREA	SERVICES	PARKING	MONTHLY RENT
Office space, 8th floor	171 m ²	200 CZK monthly per m ²	Yes	€ 10.36 / m ²



Office building

171 m², Prague 10, Vršovice, Kodaňská

€ 10.36 / m² | CZK 260 / m²

Service price	200 CZK monthly per m ²
Total building area	26 300 m ²
Tenant consumption	—
Parking	Yes
Parking service charges	—
Parking ratio	—
Certification	—
PENB	E
Reference number	15732

Project consisting of 3 office buildings using shared reception services on the ground floor. This project offers high quality flexible office space with the possibility to optimize the size and disposition of the leased area. It also offers commercial and warehouse spaces. The uniquely multicolored facade is by the Franco-Israeli artist Yaakov Agama.

Location:

The building is located on the border of Vinohrady and Vršovice and is easily accessible by car and public transport – there are bus stops nearby. The Želivského and Flora metro stations (line A) are a few stops away by public transport.

Features and Services:

Amenities include central air conditioning, lighting, network connections, 8 passenger elevators, and 2 freight elevators. The building has a round-the-clock reception with security, conference rooms, a dining room, a post office, a beauty salon, and a hairdresser's. There is a shopping center near building.

Rental and service charges listed without VAT. Lessee pays no commission.

