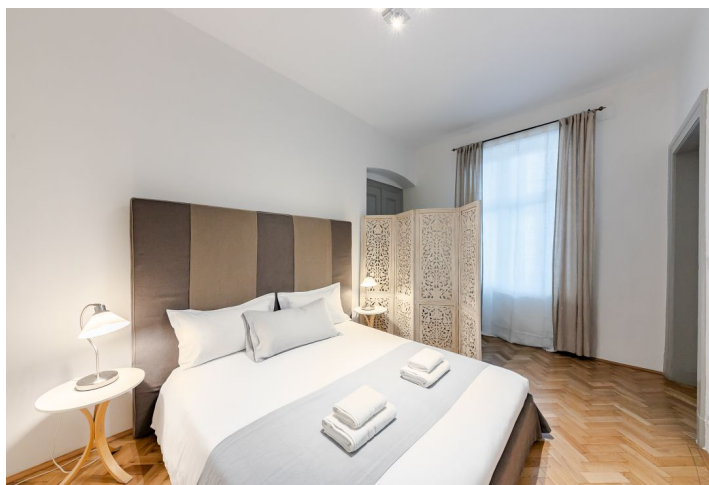
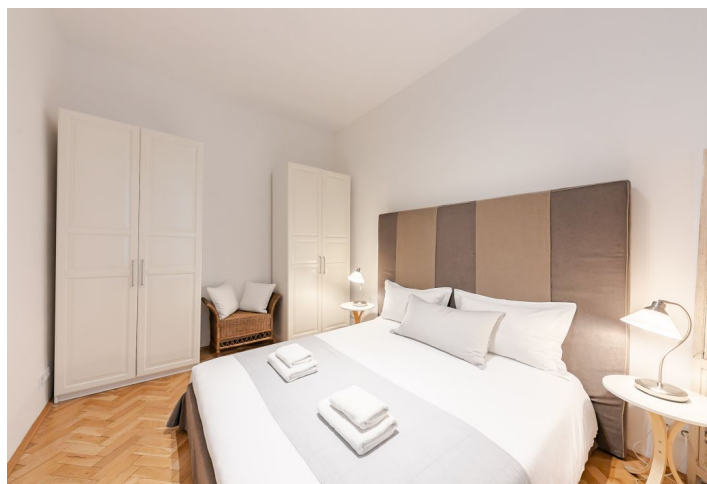




## Apartment One-bedroom (2+1)

Rented

59 m<sup>2</sup>, Praha 1, Nové Město, Ve Smečkách





## Apartment One-bedroom (2+1)

Rented

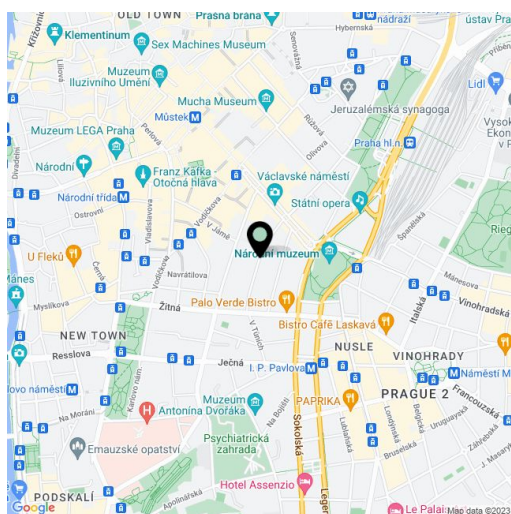
59 m<sup>2</sup>, Praha 1, Nové Město, Ve Smečkách

Total area	59 m <sup>2</sup>
Parking	-
Cellar	-
PENB	G
Reference number	1590
Available from	Immediately

Completely renovated fully furnished 1-bedroom flat on the 1st floor of a partly reconstructed residential building with a lift. Attractively located just a minute walk from Wenceslas Square with immediate access to all three Prague metro lines and full amenities.

The flat has living room, bedroom, small fitted kitchen, and shower bathroom with toilet.

Parquet floors and tiles, washer, dishwasher, microwave, dishes, chip entry to the building. Common building charges CZK 3,500/month. Gas and electricity are billed separately. The photos are taken from a similar apartment.



\* Area of the unit according to the Civil Code. The area consists of the sum total area of the entire unit bounded by perimeter walls.