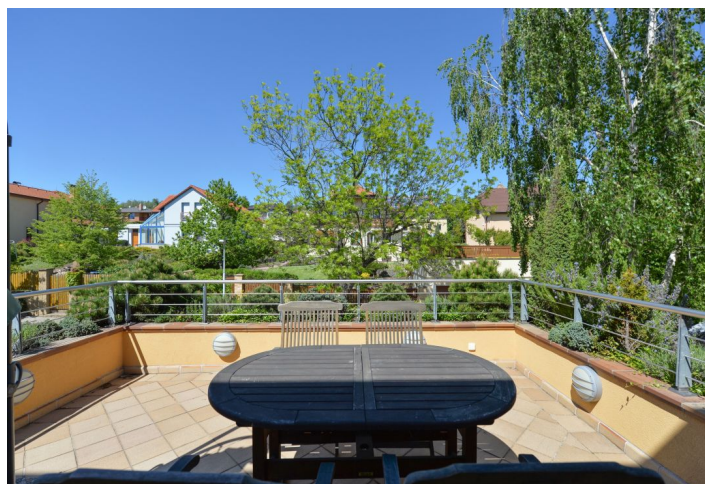




Apartment Two-bedroom (3+kk)

Rented

98 m², Prague 5, Jinonice, U Dětského hřiště





Apartment Two-bedroom (3+kk)

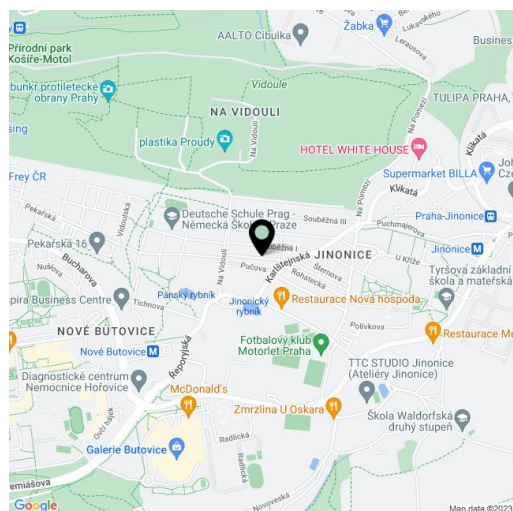
Rented98 m², Prague 5, Jinonice, U Dětského hřiště

Total area	133 m ²
Floor area*	98 m ²
Terrace	35 m ²
Parking	One parking space on the plot included.
Cellar	-
PENB	G
Reference number	15937
Available from	Immediately

Good quality partly furnished 2-bedroom flat with a 35 m² terrace, set on the second floor of a modern semidetached house in a quiet green residential neighborhood next to a protected park. Located just steps from the German School, and convenient to the French School.

The flat features living room with a fully fitted open kitchen, fireplace and access to the south-facing balcony with a nice view over the Prokopské Valley, two bedrooms, bathroom with tub and toilet, hall, a guest toilet, and utility room.

Separate entrance, oak floors and doors, Italian marble (fireplace) and tiles (bathroom), Laufen fittings, washer, dishwasher, TV, video entry phone, alarm, telephone line, satellite TV connection. A short walk to the nearest metro (10 min.), a 15 min. walk to Butovice Shopping Center. Utilities CZK 3,000/month. Available from May 2020.



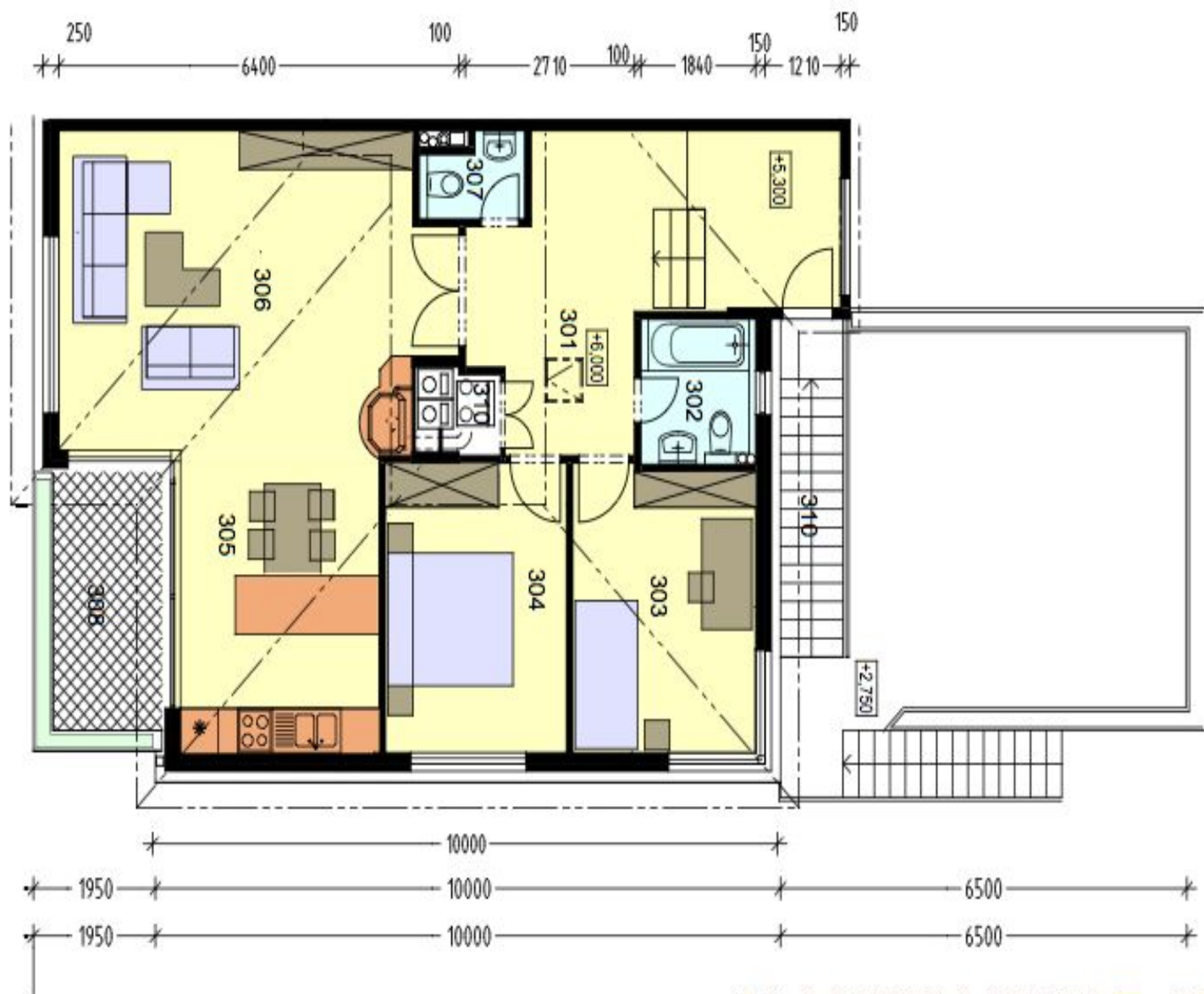
* Area of the unit according to the Civil Code. The area consists of the sum total area of the entire unit bounded by perimeter walls.



Apartment Two-bedroom (3+kk)

Rented

98 m², Prague 5, Jinonice, U Dětského hřiště



3.NP

LEGENDA MÍSTNOSTÍ

ČÍSLO	NÁZEV MÍSTNOSTI	PLOCHA
301	chodba	17.79 m ²
302	koupelna + WC	3.57 m ²
303	ložnice	11.25 m ²
304	ložnice	11.20 m ²
305	kuchyně	13.58 m ²
306	obývací pokoj	25.96 m ²
307	šatna	1.73 m ²
308	terasa	6.10 m ²
310	kotel	0.79 m ²
310	schodiště	5.68 m ²
Σ PLOCHA MÍSTNOSTÍ		97.65 m ²