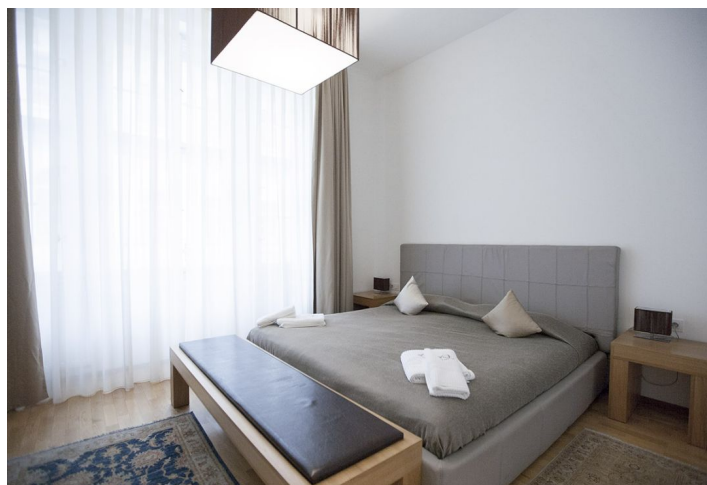




Apartment Two-bedroom (3+1)

Sold

99 m², Praha 1, Staré Město, Maiselova



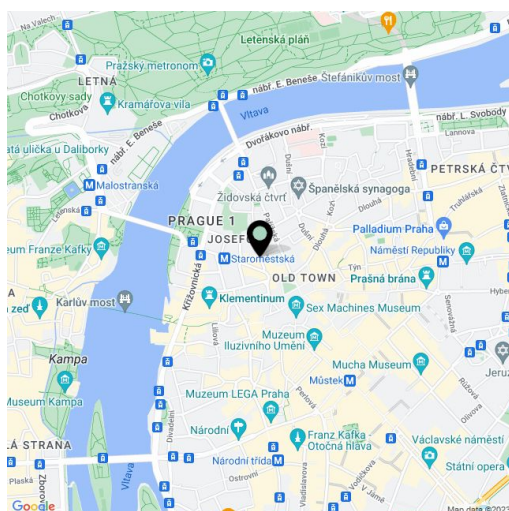


Apartment Two-bedroom (3+1)

Sold99 m², Praha 1, Staré Město, Maiselova

Total area	99 m ²
Parking	-
Cellar	-
PENB	G
Reference number	15957

Modern apartment after complete reconstruction in the city center with views of Pařížská Street and the Jewish Cemetery. Currently used as three units with a shared entrance hall for short-term rentals. In total the apartments offer an entrance hall, living room with fully equipped kitchen, 2 bedrooms and 3 bathrooms. Within walking distance from metro station, all amenities and comfort of the city center, including a number of restaurants, cafes and shops. The apartment is situated on the 1st floor of a well maintained building with no elevator. Interior 98.7 m².



* Area of the unit according to the Civil Code. The area consists of the sum total area of the entire unit bounded by perimeter walls.