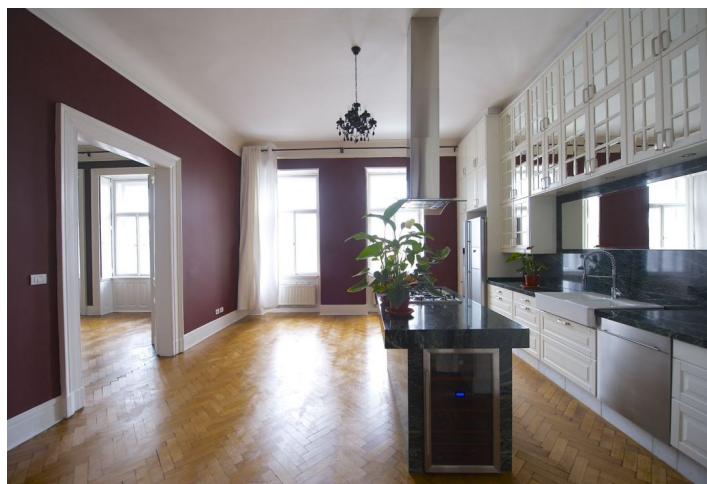




Apartment Four-bedroom (5+1)

Rented

214 m², Prague 2, Nové Město, Rašínovo nábřeží





Apartment Four-bedroom (5+1)

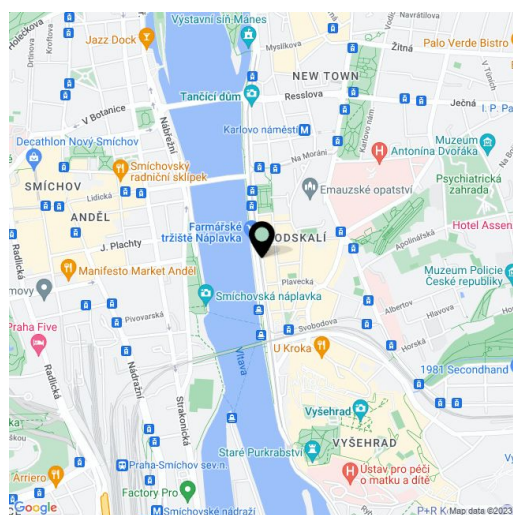
Rented214 m², Prague 2, Nové Město, Rašínovo nábřeží

Total area	214 m ²
Parking	Parking can be arranged.
Garage	Yes
Cellar	-
PENB	G
Reference number	15974
Available from	Immediately

Superb flat for rent. This 3-bedroom flat is on the first floor of a riverfront residential building from the turn of the 19th and 20th century. The building has been renovated with the aim of creating an exclusive riverside residence with concierge and valet parking services. A unique opportunity to rent a majestic tailor-made apartment with views of the Vltava river and the Prague Castle. Suitable as a hi-end apartment combined with a high-class office.

The apartment boasts three spacious air-conditioned interconnected rooms facing the river - can be kitchen, formal dining room and living room. There are three separate bedrooms - one with an en-suite bathroom and a guest toilet, second bathroom, and a large entry hall.

Parquet floors, high ceilings with stucco ornaments, marble kitchen counters and bathrooms, built-in wardrobes, alarm, sound-proof windows. The apartment can be furnished at a higher rent. Common building charges CZK 4000 per month. Deposit for gas and electricity CZK 7000 per month.



* Area of the unit according to the Civil Code. The area consists of the sum total area of the entire unit bounded by perimeter walls.