



House Eleven-bedroom (12+1)

Sold

501 m², Prague 6, Střešovice, U Laboratoře





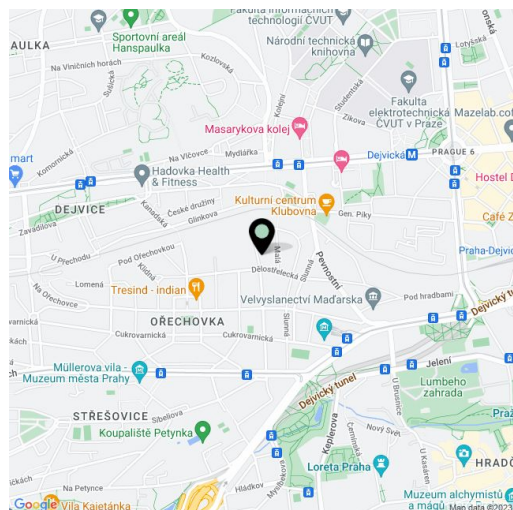
House Eleven-bedroom (12+1)

Sold501 m², Prague 6, Střešovice, U Laboratoře

Total area	501 m ²
Plot	1 256 m ²
Foot print	416 m ²
Garden	840 m ²
Floor area	489 m ²
Terrace	12 m ²
Parking	-
Cellar	Yes
PENB	G
Reference number	16000

Exceptional 1930s villa, after complete reconstruction with mature landscaped garden, located in the prestigious residential neighborhood of Prague 6 - Ořechovka.

High standard materials and modern equipment are combined with original interior features: bright rooms, wooden floors, parquets, glass railings, modern and original lighting. Ground floor: Entry hall, 3 main rooms, kitchen with pantry, terrace, winter garden, bathroom, 2 WCs. 1st and 2nd floor can be used as separate 2-bedrooms apartments/units. The basement contains the technical rooms for the house, and a one-bedroom unit. Basement area is 61m², Ground floor area is 146 m², 1st floor is 134 m², 2nd floor totals 148 m², with a total foot print of 416 m², and a garden area of 840 m². Double car garage.

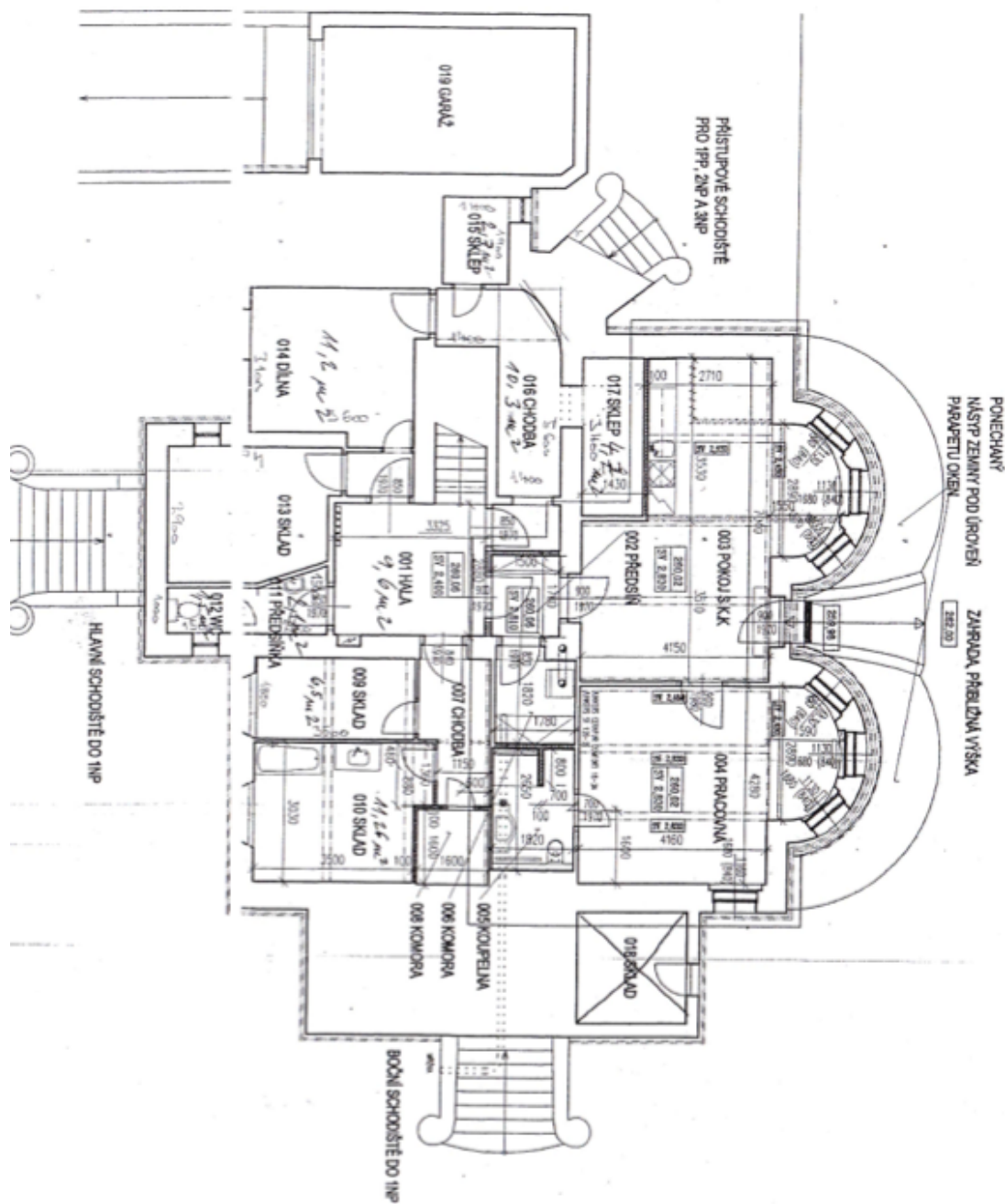




House Eleven-bedroom (12+1)

Sold

501 m², Prague 6, Střešovice, U Laboratoře

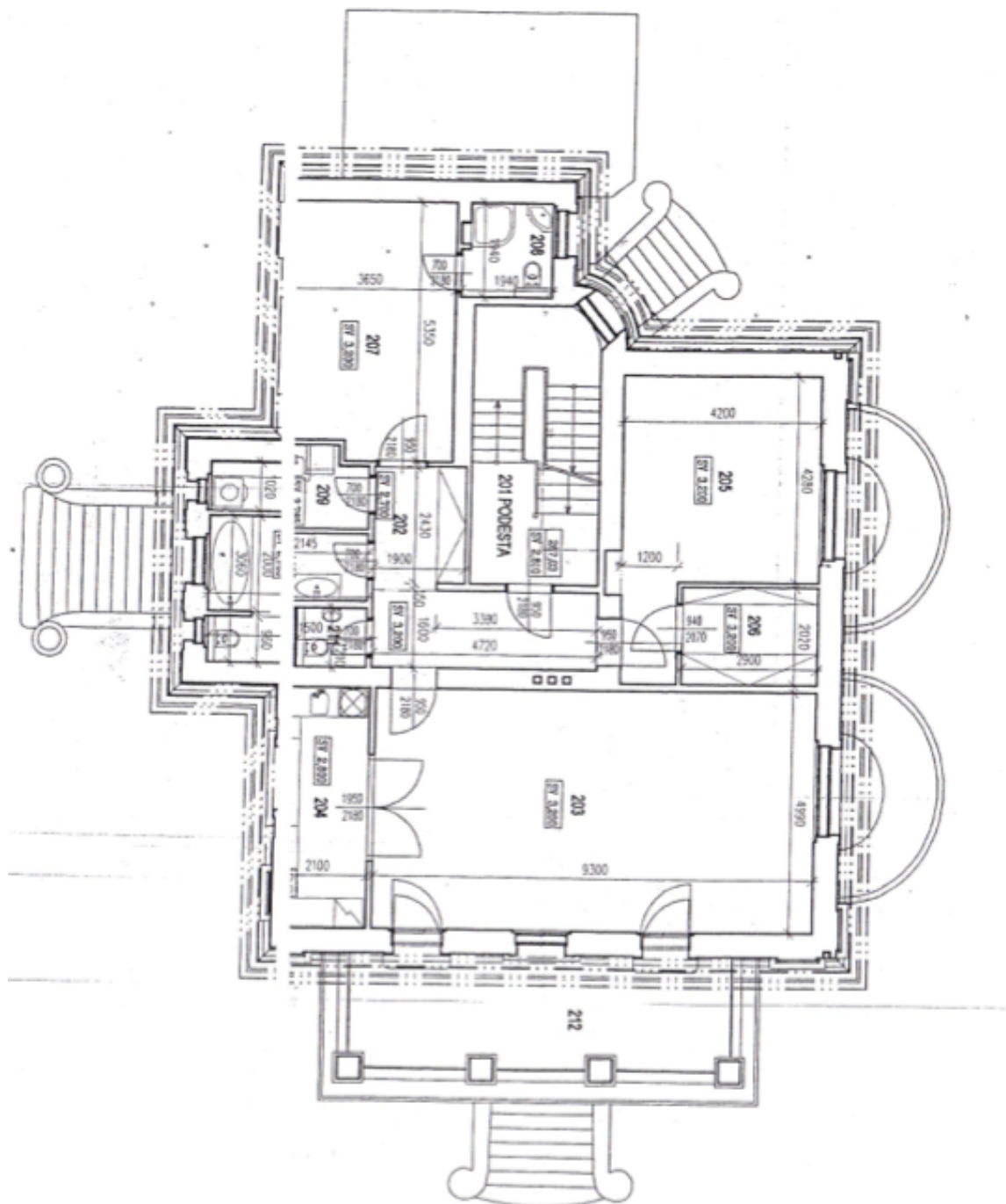




House Eleven-bedroom (12+1)

501 m², Prague 6, Střešovice, U Laboratoře

Sold

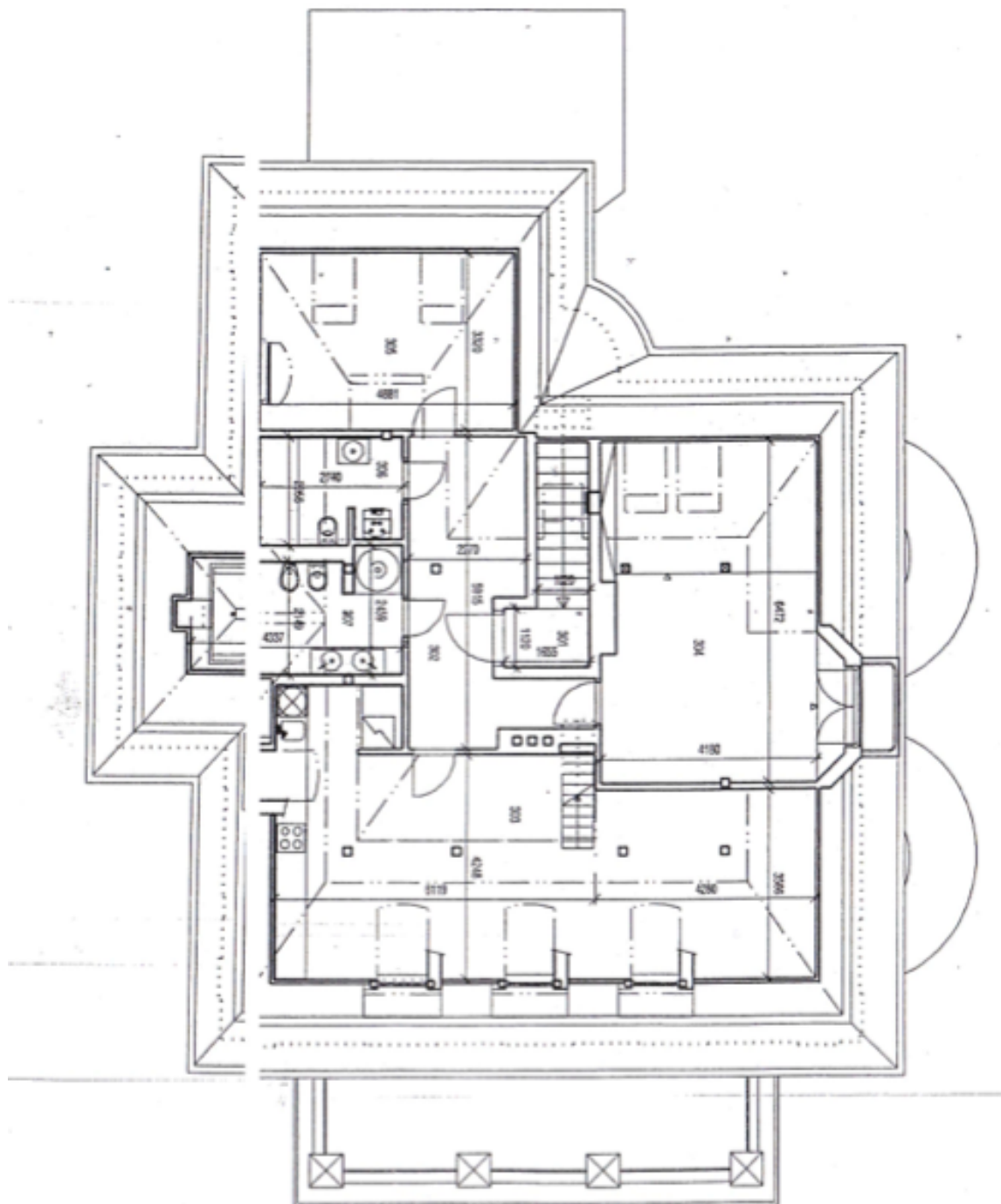




House Eleven-bedroom (12+1)

501 m², Prague 6, Střešovice, U Laboratoře

Sold

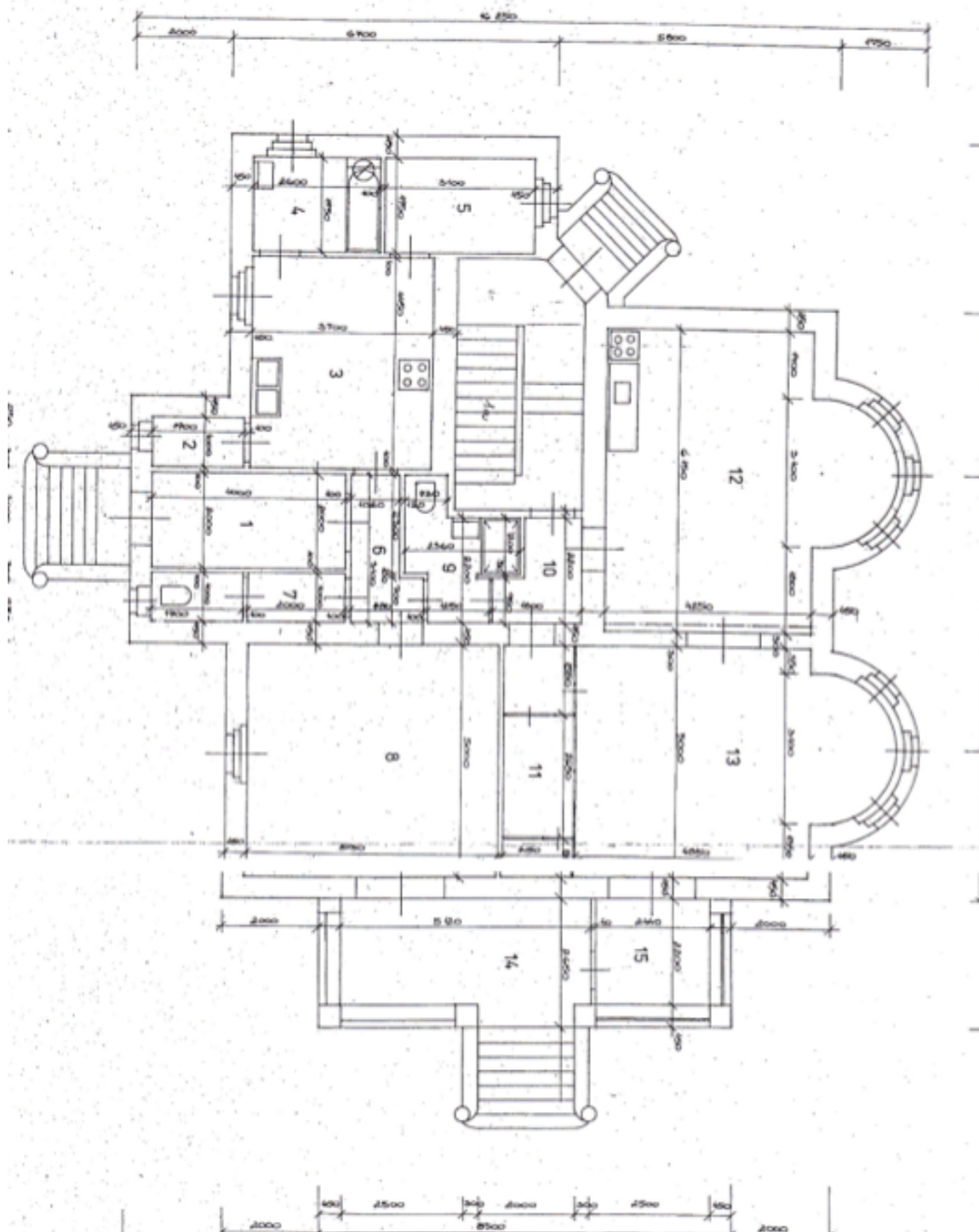




House Eleven-bedroom (12+1)

501 m², Prague 6, Střešovice, U Laboratoře

Sold





House Eleven-bedroom (12+1)

501 m², Prague 6, Střešovice, U Laboratoře

Sold

