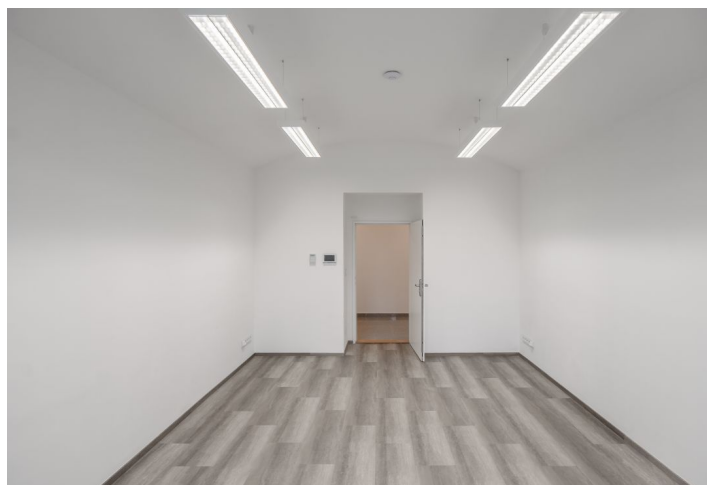
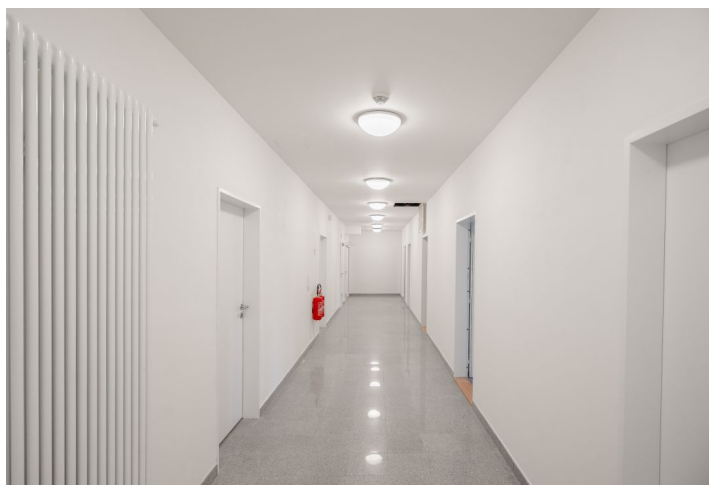
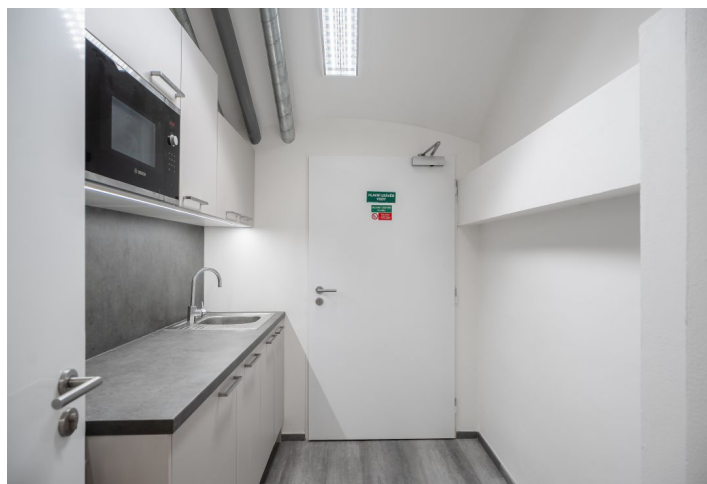




## Office space

Prague 5, Smíchov, Janáčkovo nábřeží

€ 14.00 / m<sup>2</sup> | CZK 351 / m<sup>2</sup>



**Office space**

Prague 5, Smíchov, Janáčkovo nábřeží

**€ 14.00 / m<sup>2</sup> | CZK 351 / m<sup>2</sup>**

|                         |                                   |
|-------------------------|-----------------------------------|
| <b>Service price</b>    | 90 CZK monthly per m <sup>2</sup> |
| <b>Available area</b>   | 182 m <sup>2</sup>                |
| <b>Cellar</b>           | -                                 |
| <b>Parking</b>          | Yes                               |
| <b>PENB</b>             | G                                 |
| <b>Reference number</b> | 16063                             |

Office space for lease on the lower ground floor in a renovated historic building at a prestigious address. The building is located directly on the banks of the Vltava River opposite the National Theatre. The offices have double floors and separate rooms. There are also sanitary facilities, reception including storage space.

**Location:**

Great transport connections: the tram stop is just a few steps from the building, the Anděl metro station (line B) is within walking distance. All civic amenities, including restaurants, shops and other services are also nearby.

**Features and Services:**

- Raised floors
- Social facilities
- Reception
- Storage areas
- Openable windows

Prices are without VAT. Lessee pays no commission.

