



## Apartment Two-bedroom (3+1)

Sold

112 m<sup>2</sup>, Prague 5, Malá Strana, Plaská



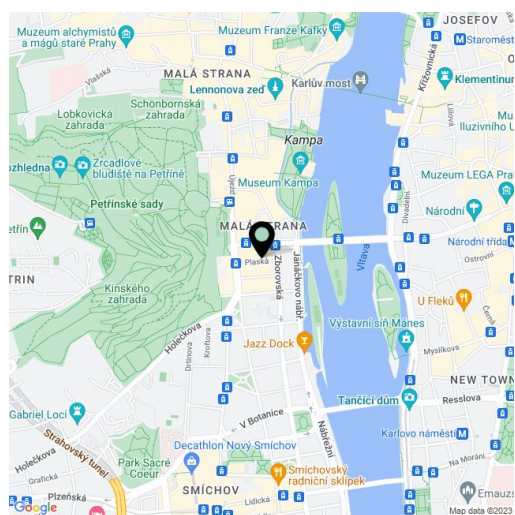


## Apartment Two-bedroom (3+1)

**Sold**112 m<sup>2</sup>, Prague 5, Malá Strana, Plaská

<b>Total area</b>	115 m <sup>2</sup>
<b>Floor area*</b>	112 m <sup>2</sup>
<b>Balcony</b>	3 m <sup>2</sup>
<b>Parking</b>	-
<b>Cellar</b>	Yes
<b>PENB</b>	G
<b>Reference number</b>	16120

Bright, spacious and completely reconstructed apartment situated on the 3rd floor of an apartment building with new lift, located just a few steps from Kampa Island and Petřín Hill. This two-bedroom apartment offers an entry hall, living room, separate kitchen with dining zone and courtyard facing balcony, 2 bedrooms, bathroom and WC. Double doors, floating floors, stucco ceilings, common areas after reconstruction, lift. Sought after residential location, easy access to Anděl's commercial zone. Interior 112 m<sup>2</sup>, balcony 3 m<sup>2</sup>, cellar.



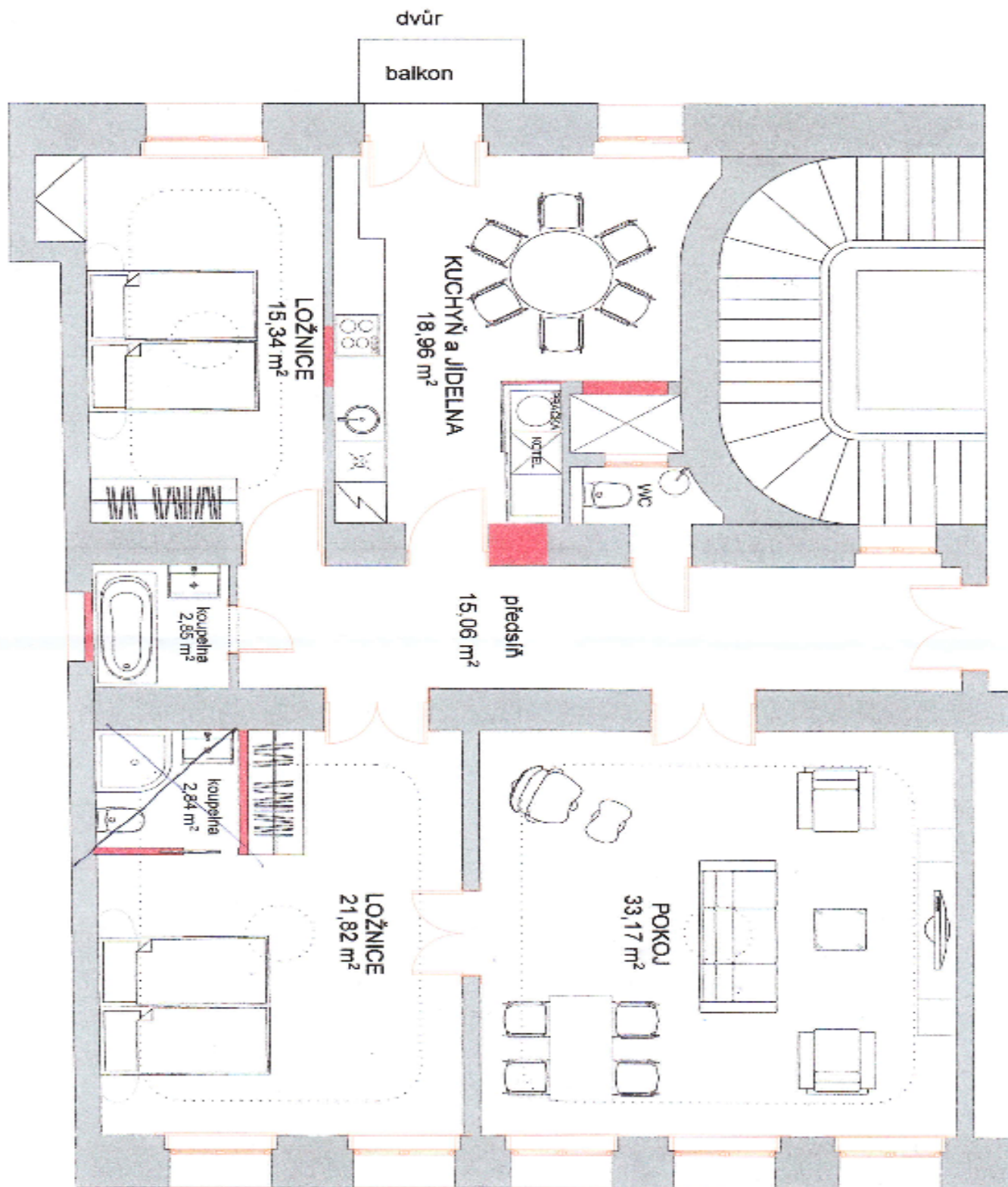
\* Area of the unit according to the Civil Code. The area consists of the sum total area of the entire unit bounded by perimeter walls.



## Apartment Two-bedroom (3+1)

Sold

112 m<sup>2</sup>, Prague 5, Malá Strana, Plaská



BYT VE 2.PATŘE DOMU Č.611/1 V PLASKÉ ULICI, PRÁHA 5  
VARIANTA D