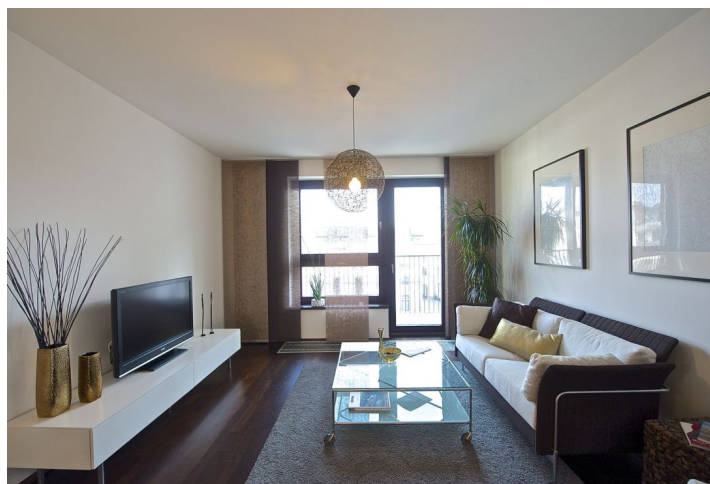
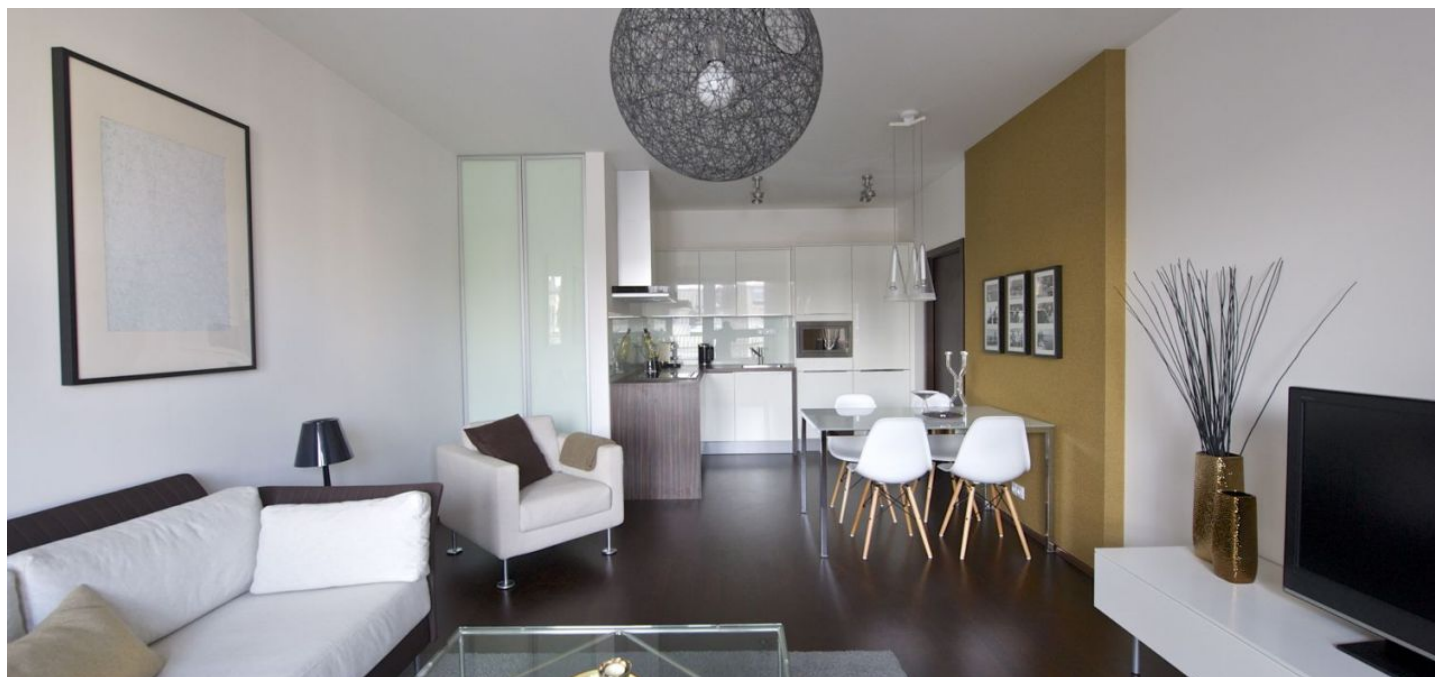




## Apartment One-bedroom (2+kk)

Rented

63 m<sup>2</sup>, Prague 7, Holešovice, U Uranie





## Apartment One-bedroom (2+kk)

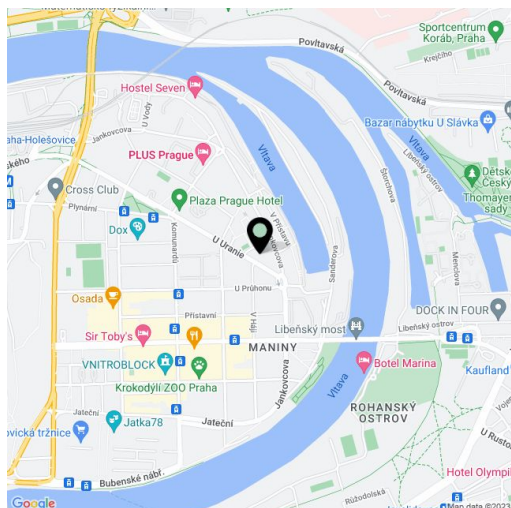
**Rented**63 m<sup>2</sup>, Prague 7, Holešovice, U Uranie

Total area	69 m <sup>2</sup>
Floor area*	63 m <sup>2</sup>
Balcony	6 m <sup>2</sup>
Parking	Underground garage parking space CZK 1500/month.
Garage	Yes
Cellar	-
PENB	G
Reference number	16142
Available from	Immediately

**Modern Prague apartment for rent in Prague 7. This architect designed bright 2-bedroom apartment with a balcony and lovely views of Prague is on the 4th floor with lift in the Holešovice Brewery residential project.**

The courtyard oriented flat features living room with an open plan contemporary kitchen and balcony access, one bedroom, bathroom with bath tub and toilet, and a large walk-in closet (wall of built-in wardrobes) in the entry hall.

Oak wood mosaic floors, quality fixtures and fittings (Grohe, Laufen, Kaldewei), dishwasher, ceramic cooktop, shelves and hanging bars in the walk-in closet, UPC cable TV, audio entry phone, security door, lift. Quiet location near the Vltava river, a few minute walk to a golf course and tennis courts. Easy connection to the city center - trams or metro line C, Nádraží Holešovice. Steps to the Austrian School. Underground garage parking space at CZK 1500/month. Common building charges and utilities approx. CZK 3600/month. Electricity will be transfer on the tenant. Available from June 2017.



\* Area of the unit according to the Civil Code. The area consists of the sum total area of the entire unit bounded by perimeter walls.



## Apartment One-bedroom (2+kk)

63 m<sup>2</sup>, Prague 7, Holešovice, U Uranie

Rented

