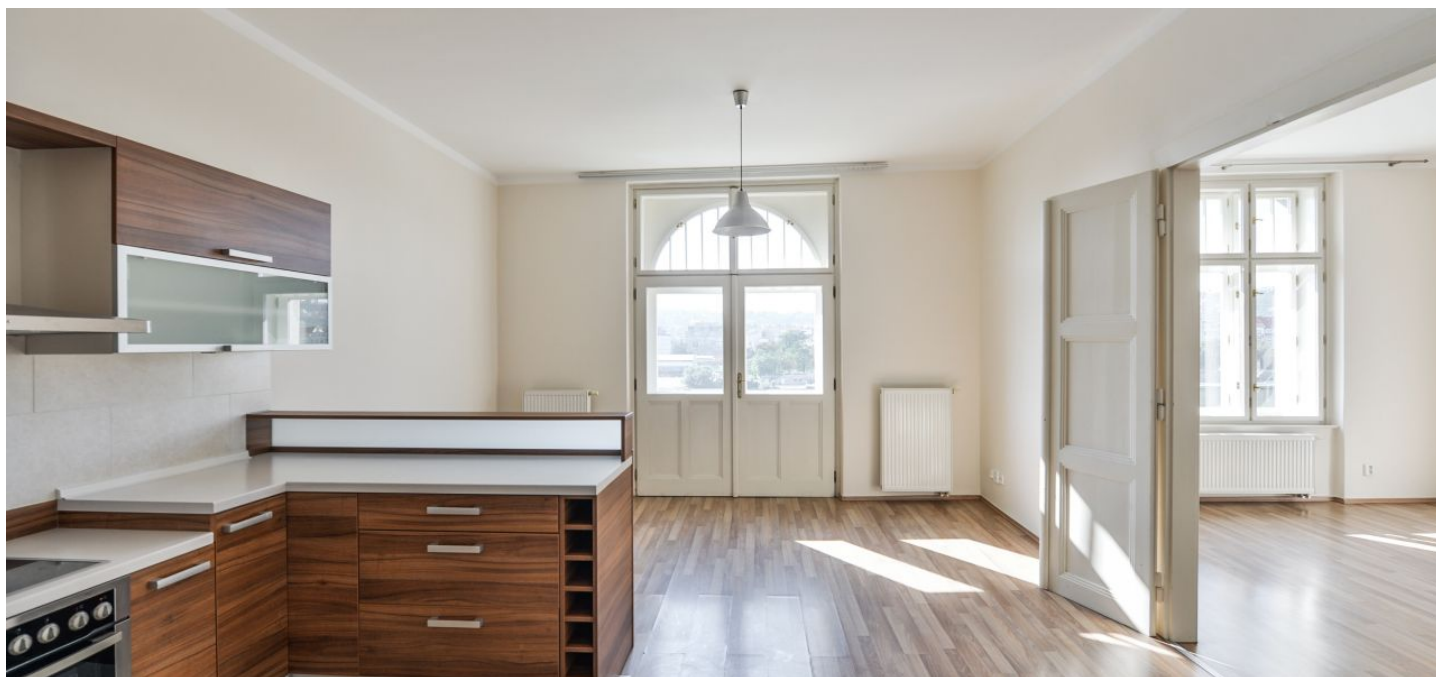




Apartment Two-bedroom (3+1)

Rented

97 m², Praha 2, Nové Město, Rašínovo nábřeží





Apartment Two-bedroom (3+1)

Rented

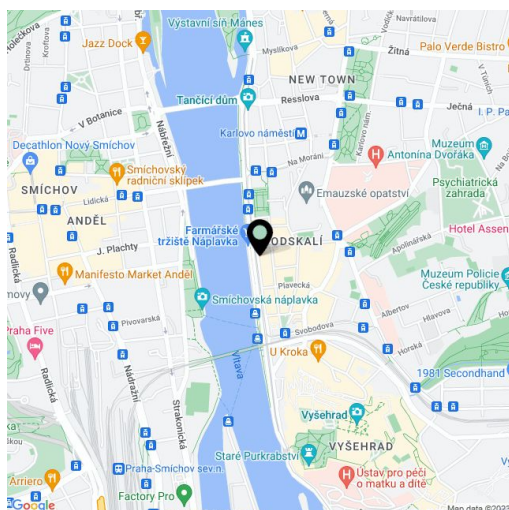
97 m², Praha 2, Nové Město, Rašínovo nábřeží

Total area	99 m ²
Floor area*	97 m ²
Balcony	2 m ²
Parking	-
Cellar	-
PENB	G
Reference number	16155
Available from	Immediately

Bright 2-bedroom flat with a balcony and beautiful views of the Vltava embankment, the Prague Castle and Petřín hill, on the third floor of a well kept, fully renovated traditional building with a new lift. Located within easy reach of full amenities, just a few minute walk from Karlovo náměstí metro station and tram links, and convenient to the French School.

The interior includes a large central entrance hall, a fully fitted eat-in kitchen with **balcony** access, living room, two bedrooms facing the quiet courtyard, bathroom with bathtub, toilet, and a spacious **walk-in closet**.

Airy rooms, preserved original features, large windows, laminated floating floors, tiles, security entry door, gas boiler, dishwasher, microwave oven. Service charges CZK 500/person/month. Gas and electricity will be transferred to the tenant.



* Area of the unit according to the Civil Code. The area consists of the sum total area of the entire unit bounded by perimeter walls.