



Apartment Three-bedroom (4+kk)

Sold

152 m², Prague 6, Bubeneč, Gotthardská





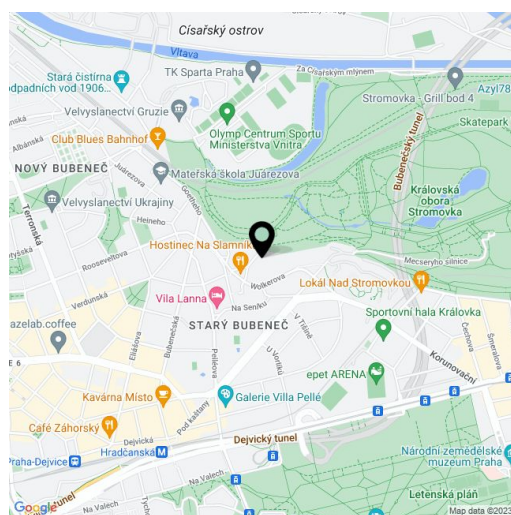
Apartment Three-bedroom (4+kk)

Sold152 m², Prague 6, Bubeneč, Gotthardská

Total area	174 m ²
Floor area*	152 m ²
Terrace	22 m ²
Parking	-
Cellar	-
PENB	G
Reference number	16200

Spacious renovated 3-bedroom apartment on the 2nd floor of a reconstructed building with a lift and large garden. Located in the prestigious embassy district right next to the largest park in Prague, Stromovka, a minute walk to a bus stop, and only a 10 minute walk to Hradčanská metro station.

The interior features a spacious living room with access to the terrace, a central hall, fully fitted kitchen with dining area, study with access to the terrace that faces a private courtyard, 2 bedrooms - master bedroom with walk-in closet, bathroom (bath tub, shower, sink, toilet), chamber, guest toilet, boiler room/walk-in closet, and entry hall. Oriented to the East and West. Parking on the street or possibility to rent a garage space at the next door building (Dutch Embassy). Interior 152.2 m², balconies 9.2 m², terrace 12.4 m².



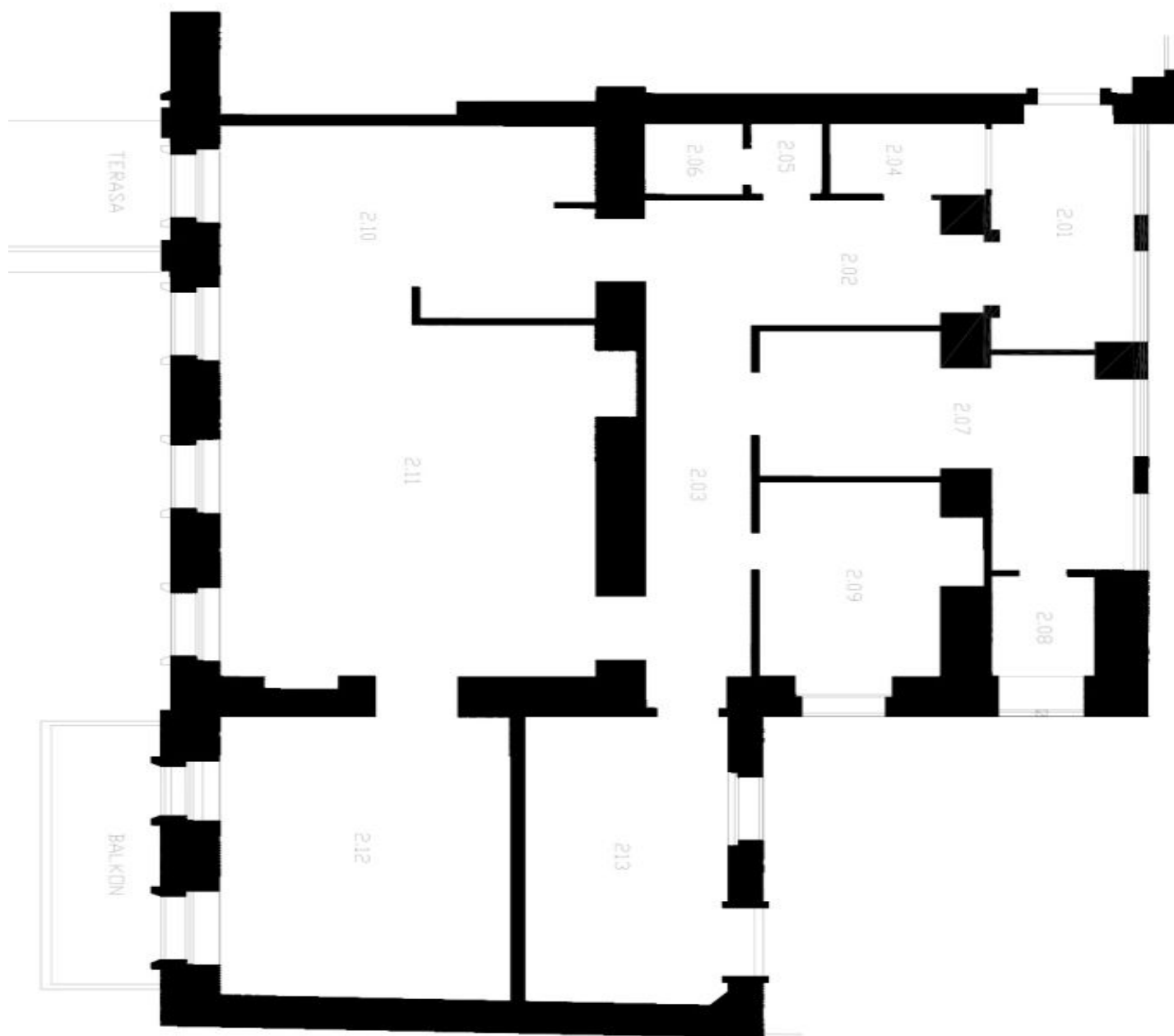
* Area of the unit according to the Civil Code. The area consists of the sum total area of the entire unit bounded by perimeter walls.



Apartment Three-bedroom (4+kk)

Sold

152 m², Prague 6, Bubeneč, Gotthardská





Apartment Three-bedroom (4+kk)

Sold

152 m², Prague 6, Bubeneč, Gotthardská

2.01	PŘEDSÍŇ	6,6 M ²	DŘEVĚNÁ PLOVOUCÍ	
2.02	HALA	10 M ²	DŘEVĚNÁ PLOVOUCÍ	
2.03	CHODBA	7,2 M ²	DŘEVĚNÁ PLOVOUCÍ	
2.04	ŠATNA	2,8 M ²	KERAMICKÁ DLAŽBA	
2.05	WC PŘEDSÍŇ	1,5 M ²	KERAMICKÁ DLAŽBA	UMVADLO, BATERIE DTTO
2.06	WC	1,7 M ²	KERAMICKÁ DLAŽBA	WC MÍSA GEBERIT
2.07	PRACOVNA	16 M ²	DŘEVĚNÁ PLOVOUCÍ	
2.08	DOMÁCÍ PRÁCE	2,1 M ²	DŘEVĚNÁ PLOVOUCÍ	
2.09	KOUPELNA	10,4 M ²	KERAMICKÁ DLAŽBA	WC MÍSA GEBERIT, 2X UMN., 2X BAT. DTTO, VANA, BAT. DTTO BIDET, BAT. BIDET., SVĚT. RAMPA. SPRCHKOUT, BAT. DTTO
2.10	KUCHYŇ	20,4 M ²	DŘEVĚNÁ PLOVOUCÍ	KUCHYŇSKÁ LINKA, DŘEZ S BATERIÍ, SPORÁK, LEDNICE KOTEL PLYNOVÝ KOMBINOVANÝ
2.11	OBÝVACÍ POKOJ	35,5 M ²	DŘEVĚNÁ PLOVOUCÍ	
2.12	LOŽNICE	22 M ²	DŘEVĚNÁ PLOVOUCÍ	
2.13	LOŽNICE	16 M ²	DŘEVĚNÁ PLOVOUCÍ	
	CELKEM BYT	152,2 M ²		
	TERASA DO ZAHRADY	12,4 M ²		
	TERASA DO ULICE	5,4 M ²		
	BALKON	3,8 M ²		