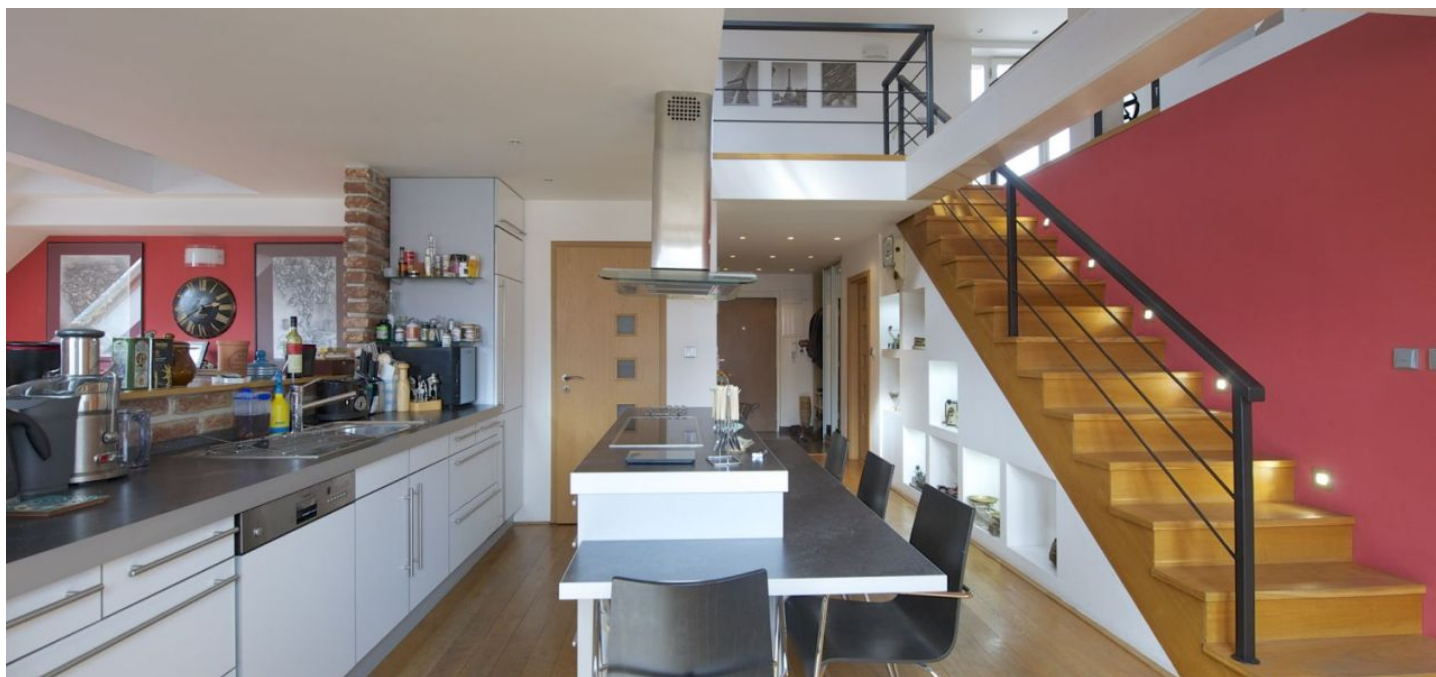




Apartment Three-bedroom (4+kk)

Sold

160 m², Praha 2, Nusle, Nezamyslova



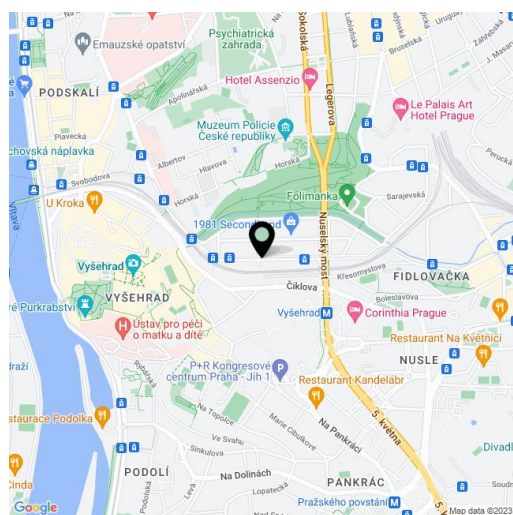


Apartment Three-bedroom (4+kk)

Sold160 m², Praha 2, Nusle, Nezamyslova

Total area	169 m ²
Floor area*	160 m ²
Terrace	9 m ²
Parking	-
Cellar	-
PENB	G
Reference number	16223

Spacious split-level 3-bedroom apartment with a terrace, situated on the top (4th) floor of historic building, close to Folimanka Park, 3 minute walk to tram stop. Interior of the flat offers an entry hall with closet, open concept living room, dining area and kitchen with pantry, 2 bedrooms with bathroom and 2nd walk-in closet. The top floor features a gallery/3rd bedroom with bathroom, and terrace access. Well maintained common areas, lift under construction. Interior 160 m², terrace 9 m².



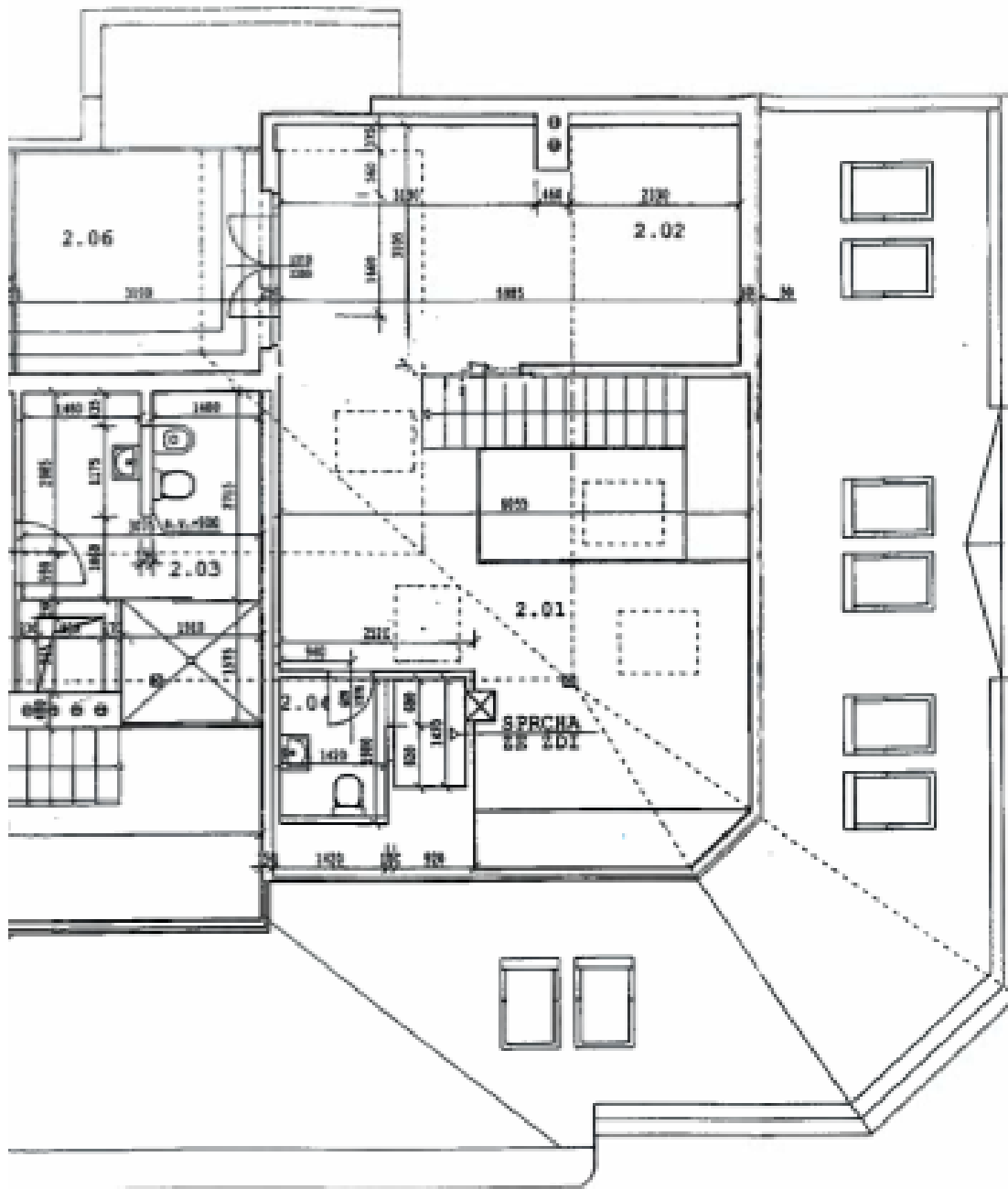
* Area of the unit according to the Civil Code. The area consists of the sum total area of the entire unit bounded by perimeter walls.



Apartment Three-bedroom (4+kk)

Sold

160 m², Praha 2, Nusle, Nezamyslova



www.svoboda-williams.cz



Apartment Three-bedroom (4+kk)

Sold

160 m², Praha 2, Nusle, Nezamyslova

