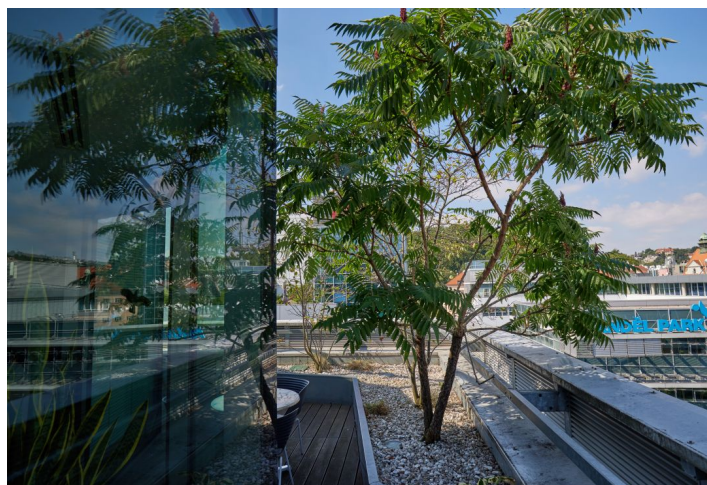




Office building

Prague 5, Smíchov, Klicperova

Rented



**Office building**

Prague 5, Smíchov, Klicperova

Rented

Service price	149 CZK monthly per m ²
Total building area	6 456 m ²
Tenant consumption	—
Parking	140 EUR
Parking service charges	—
Parking ratio	—
Certification	—
PENB	A
Reference number	16240

Office space for lease in an office building located on the corner of Radlická and Karla Engliš streets. The building has a central reception, openable windows or card access. Possibility of parking.

Location:

Very easily accessible by car and public transportation – in close vicinity of the Anděl metro station (line B), bus and tram stops; easy access to the Strahovský tunnel and Prague circle. The building is located in an attractive area with a range of hotels, entertainment and shopping centers.

Features and Services:

Central reception
 Security service 24/7
 CCTV
 Magnetic card access
 Class A office premises
 Clear height in office space 2.8 m
 Air-conditioning and ventilation
 Openable windows
 Raised floors
 Kitchenette
 Parking

Rental and service charges listed without VAT. Lessee pays no commission.



Office building

Prague 5, Smíchov, Klicperova

Rented



Unit	Size
1st Floor / 2 NP	1054 m ²



3rd Floor / 4NP	Unit	Size
		730 m ²




Office building

Prague 5, Smíchov, Klicperova

Rented



	Unit
	5th Floor / 6NP
	Size
1 109 m ²	



Office building

Prague 5, Smíchov, Klicperova

Rented

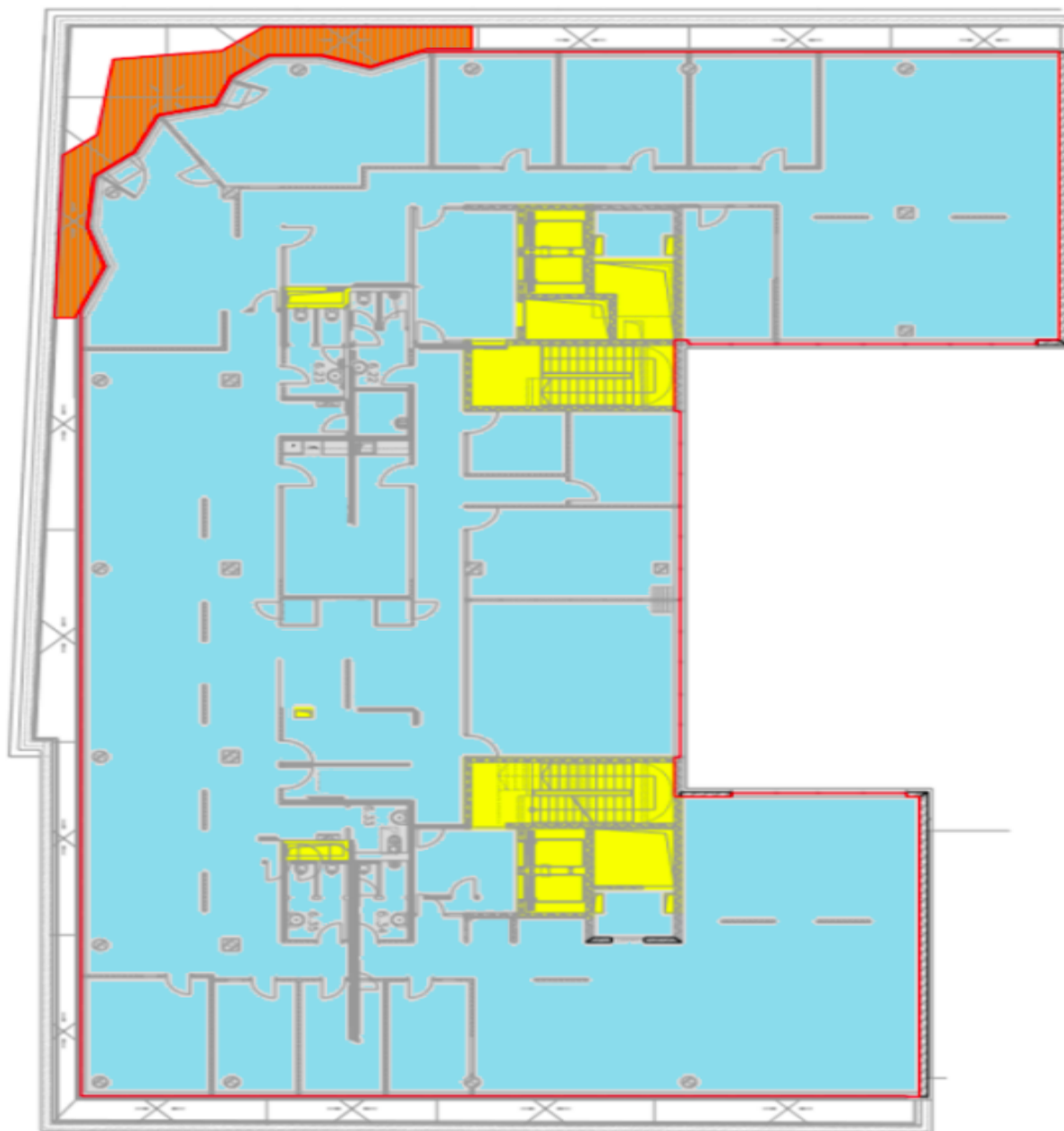






Office building

Prague 5, Smíchov, Klicperova

Rented



6th Floor / 7NP	
Unit	Size
	+ terrace 27 m ²
	951 m ²