



# Office building

Prague 1, Malá Strana, Sněmovní

Rented



**Office building**

Prague 1, Malá Strana, Sněmovní

**Rented**

<b>Service price</b>	60 CZK monthly per m <sup>2</sup>
<b>Total building area</b>	848 m <sup>2</sup>
<b>Tenant consumption</b>	—
<b>Parking</b>	Yes
<b>Parking service charges</b>	—
<b>Parking ratio</b>	—
<b>Certification</b>	—
<b>PENB</b>	G
<b>Reference number</b>	16274

Historic building from the 15th century in Malá Strana. Tranquil location right under the Prague Castle. In the vicinity of the administrative complex of the Parliament of the Czech Republic (House of Representatives and the Senate). One tram stop from the Malostranská "A" metro station, five tram stops to the Anděl shopping and entertainment center.

Four story historic building with an atrium. Neo-Baroque style facade from 1907 with an ornamental Madonna and a Child. The exterior has been completely renovated (facade and roof). The building is a listed Czech cultural heritage site.

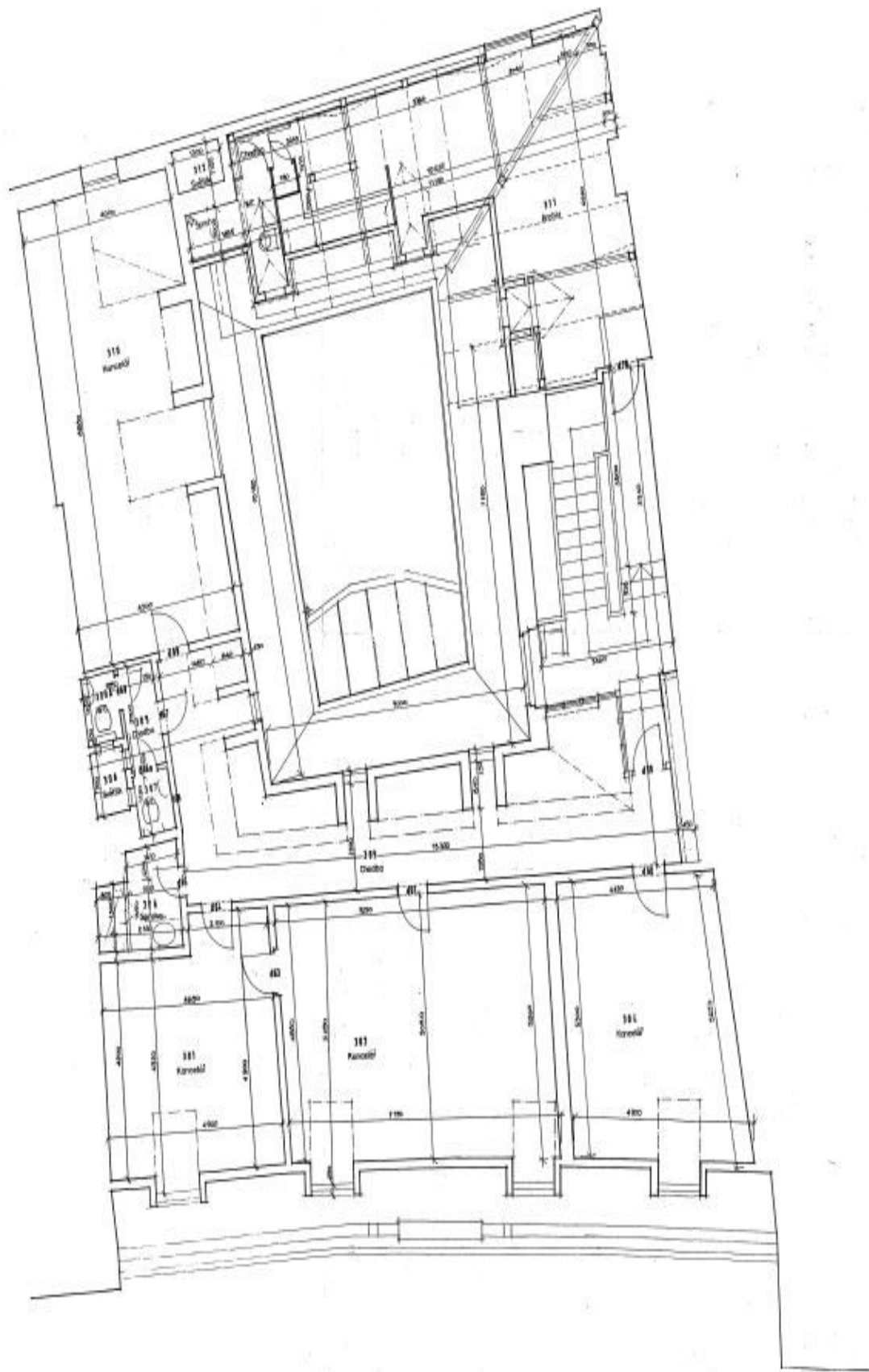
Rental and service charges listed without VAT. Lessee pays no commission.



# Office building

Prague 1, Malá Strana, Sněmovní

Rented





# Office building

Prague 1, Malá Strana, Sněmovní

Rented

