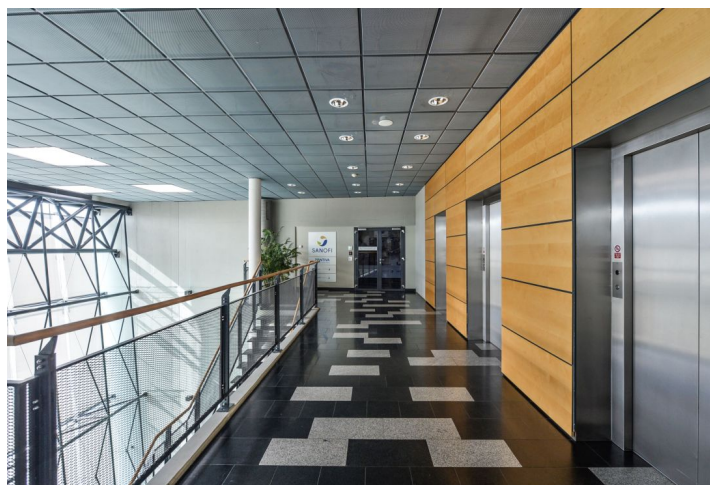
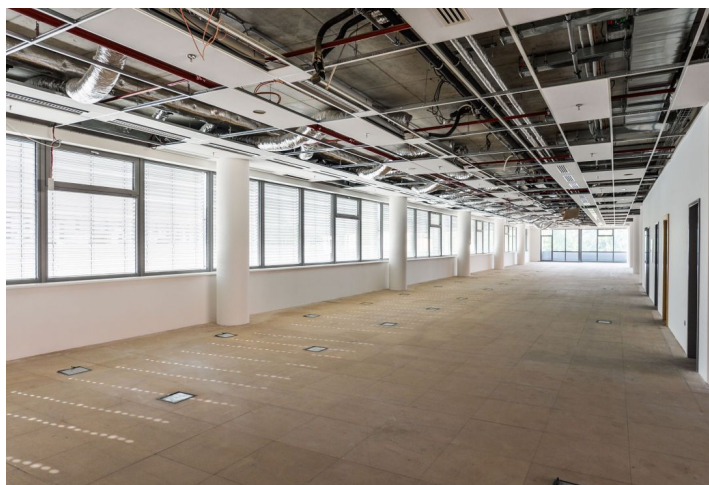




Office space

Prague 6, Vokovice, Evropská

€ 14.63 / m² | CZK 368 / m²



**Office space**

Prague 6, Vokovice, Evropská

€ 14.63 / m² | CZK 368 / m²

Service price	115 CZK monthly per m ²
Available area	700 m ²
Cellar	-
Parking	EUR 80 / ps / month
PENB	G
Reference number	16293

Office space for lease on the 1st floor of a modern class A office building situated in Prague 6 offering a perfect work environment to suit a variety of tenants' needs, combining state-of-the-art technologies with a modern functional design, ideal for forward-thinking companies.

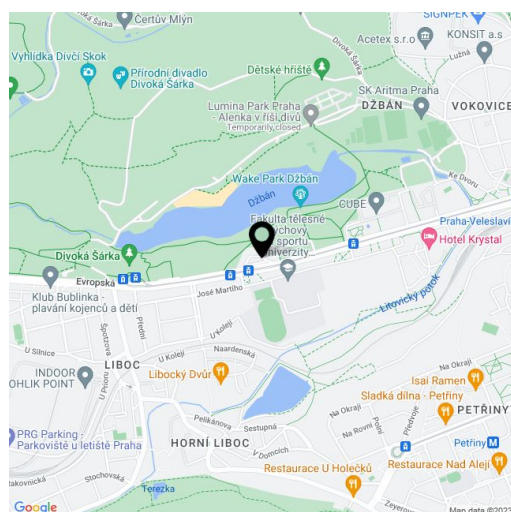
Location:

The building is located northwest of the city center with excellent visibility from Evropská Street and great accessibility from the international airport. Both tram and bus stops are located nearby and the Nádraží Veleslavín metro station (line A) is a 5-minute walk away. Easy access to the Prague Ring Road, very good connections to the D5 and R7 highways. Nearby are some of the best residential areas in Prague as well as the protected forests of the vast Šárka Valley.

Features and services:

- Suspended ceilings
- Raised floors
- Sprinklers
- Air-conditioning
- Openable windows
- Optical cable
- Central reception
- 3 modern elevators
- 24/7 security
- Magnetic card access
- Professional property management on-site
- Canteen
- Underground parking

Rental and service charges listed without VAT. Lessee pays no commission.





Office space

€ 14.63 / m² | CZK 368 / m²

Prague 6, Vokovice, Evropská

