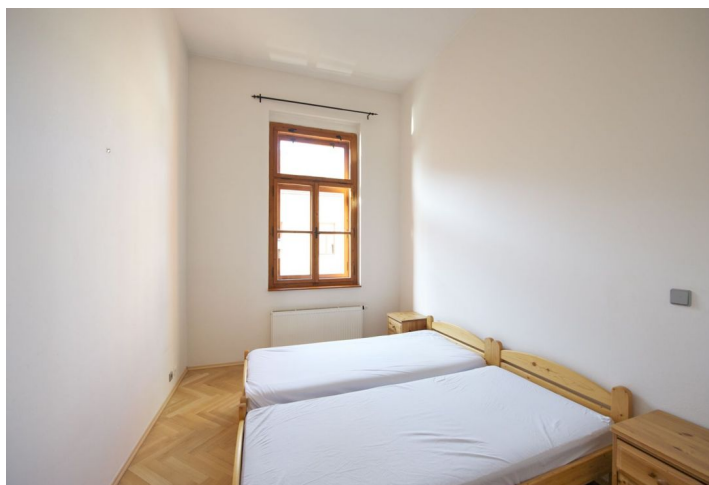




## Apartment Two-bedroom (3+1)

Sold

90 m<sup>2</sup>, Prague 2, Vinohrady, Záhřebská



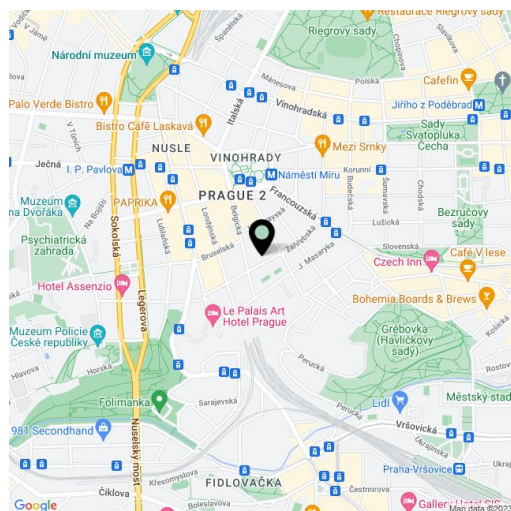


## Apartment Two-bedroom (3+1)

**Sold**90 m<sup>2</sup>, Prague 2, Vinohrady, Záhřebská

|                         |  |
|-------------------------|--|
| <b>Total area</b>       | 92 m <sup>2</sup>                                    |
| <b>Floor area*</b>      | 90 m <sup>2</sup>                                    |
| <b>Balcony</b>          | 2 m <sup>2</sup>                                     |
| <b>Parking</b>          | One garage parking space included in purchase price. |
| <b>Garage</b>           | Yes  |
| <b>Cellar</b>           | Yes  |
| <b>PENB</b>             | G  |
| <b>Reference number</b> | 16315  |

Apartment in a new residence in the heart of Vinohrady with parking, a few minutes walk from the náměstí Míru square, with easy access to the city center. This apartment is situated on the 3rd floor and offers a spacious entrance hall, social part of the living room separated from the dining area and kitchen, large bathroom with toilet, 2 bedrooms, one with private bathroom and another toilet and with an entrance to the balcony. Parquet floors, built-in wardrobes in bedrooms and entrance hall, gas boiler in the utility room accessed from the hallway outside the apartment, elevator. Option to purchase parking space in the house and cellar at extra cost. Interior of 90.3 m<sup>2</sup>, balcony 1.9 m<sup>2</sup>.



\* Area of the unit according to the Civil Code. The area consists of the sum total area of the entire unit bounded by perimeter walls.



# Apartment Two-bedroom (3+1)

90 m<sup>2</sup>, Prague 2, Vinohrady, Záhřebská

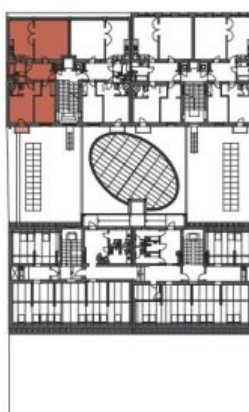
Sold

ZÁHŘEBSKÁ 23/25

byť 244/5



Vybavení interiéru vyobrazené na půdorysu není součástí prodeje.



### POPIS JEDNOTKY

číslo bytu

244/5

podlaží

5. np

plocha

92,2 m<sup>2</sup>

dispozice

3+1

status

k prodeji

cena

9.289.427,-CZK

### LEGENDA MÍSTNOSTÍ

|      |               |                          |
|------|---------------|--------------------------|
| 5.01 | hala          | 9,3m <sup>2</sup>        |
| 5.02 | koupelna      | 3,8m <sup>2</sup>        |
| 5.03 | WC            | 1,4m <sup>2</sup>        |
| 5.04 | koupelna      | 2,9m <sup>2</sup>        |
| 5.05 | kuchyně       | 18,5m <sup>2</sup>       |
| 5.06 | obývací pokoj | 25,0m <sup>2</sup>       |
| 5.07 | ložnice       | 15,2m <sup>2</sup>       |
| 5.08 | ložnice       | 12,9m <sup>2</sup>       |
| 5.09 | kotelna       | 1,3m <sup>2</sup>        |
| 5.10 | balkon        | 1,9m <sup>2</sup>        |
|      |               | <b>92,2m<sup>2</sup></b> |