



Office building

Prague 2, Nové Město, Václavská

Rented



**Office building**

Prague 2, Nové Město, Václavská

Rented

Service price	115 CZK monthly per m ²
Total building area	2 865 m ²
Tenant consumption	—
Parking	3 200 CZK
Parking service charges	—
Parking ratio	—
Certification	—
PENB	G
Reference number	16322

Functionalist building from 1936 with commercial premises for lease. This administrative building offers office and retail space with flexible open-plan floors. The upper floor windows offer outstanding panoramic views of the Prague Castle complex; there is also a terrace.

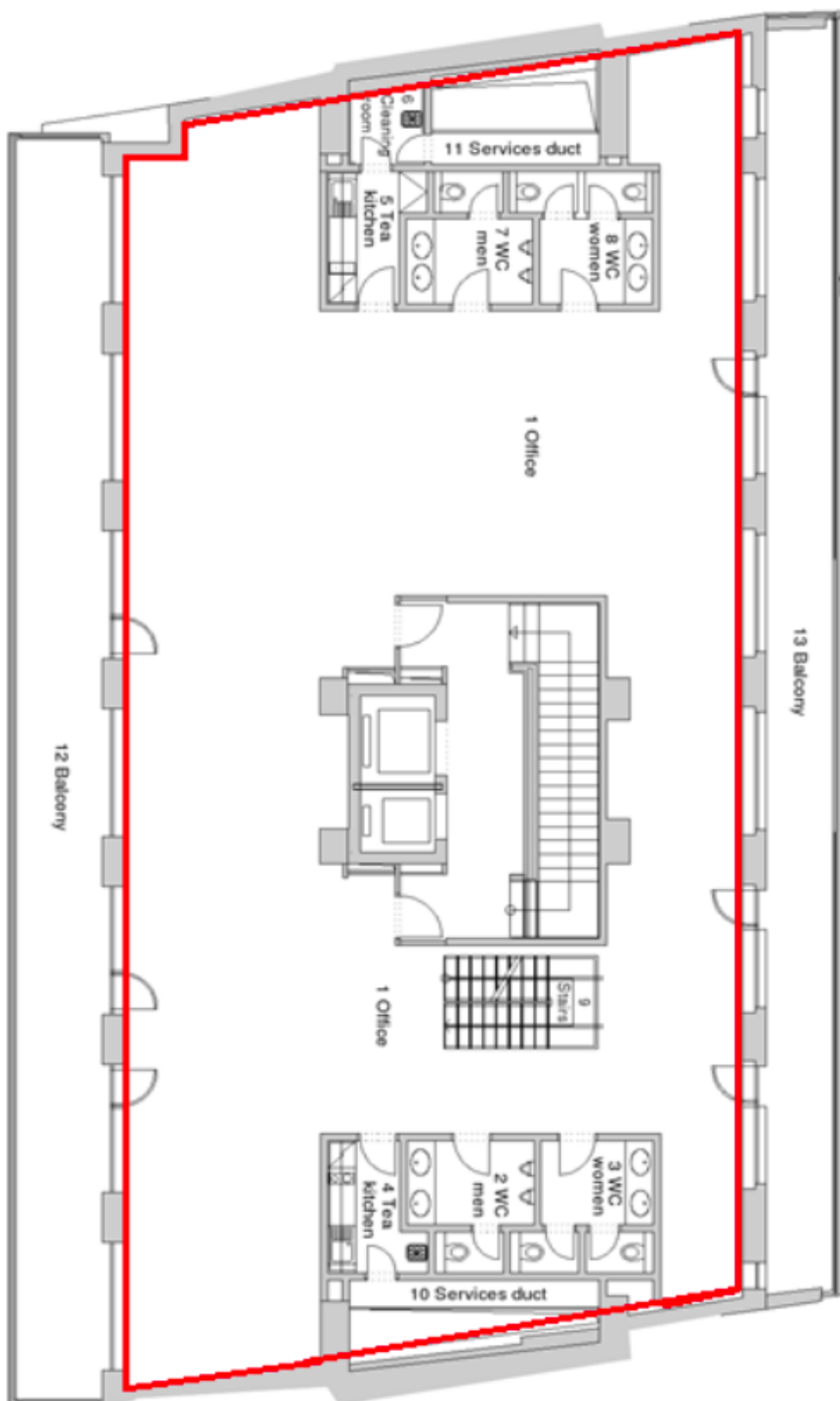
Location:

The building is situated in the center of Prague 2, close to Karlovo náměstí. Outstanding accessibility by car and public transportation – within walking distance of the Karlovo náměstí metro station (line B), and just moments from a tram stop.

Features and specifications:

Representative central reception
 24-hour reception and security service
 Magnetic card access
 Flexible open layout
 Cable trunking
 Fan-coil units
 Suspended ceiling
 Air-conditioning and ventilation
 Two elevators, one for four and one for eight people
 5 parking spots in garage

Rental and service charges listed without VAT. Lessee pays no commission.



Půdorys 6. patra



Office building

Prague 2, Nové Město, Václavská

Rented

Půdorys 7. patra

