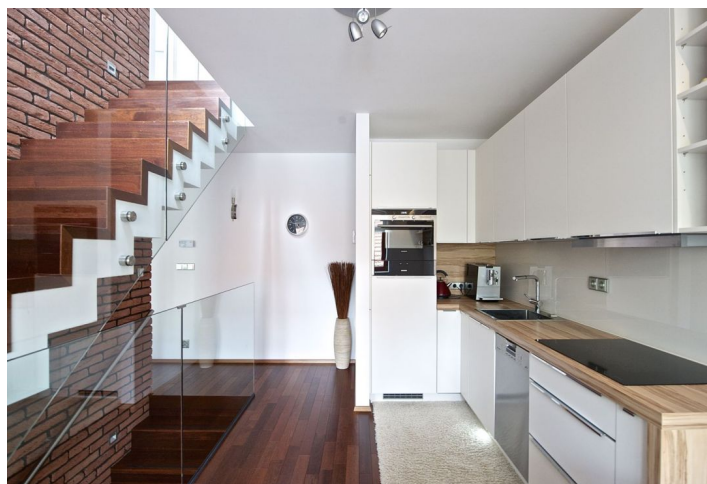




## Apartment Three-bedroom (4+kk)

Sold

118 m<sup>2</sup>, Praha 6, Střešovice, Pod Bateriemi





## Apartment Three-bedroom (4+kk)

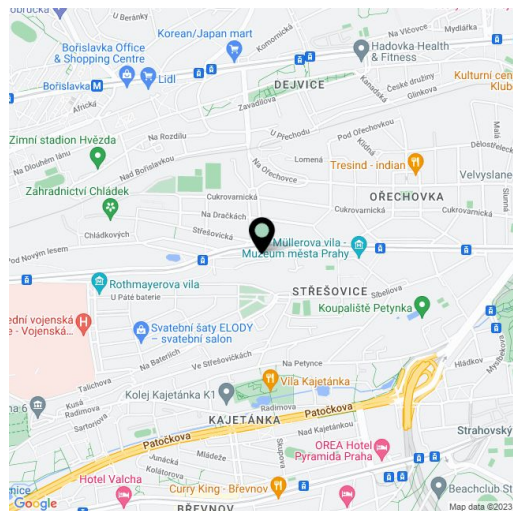
**Sold**118 m<sup>2</sup>, Praha 6, Střešovice, Pod Bateriemi

Total area	123 m <sup>2</sup>
Floor area*	118 m <sup>2</sup>
Terrace	5 m <sup>2</sup>
Parking	Yes
Garage	Yes
Cellar	-
PENB	G
Reference number	16330

**High class ground floor apartment for sale situated in a residence with an enclosed yard, garage parking and surveillance system, in attractive location in Prague 6.**

The layout of this split-level 3-bedroom apartment offers an entrance hall with built-in wardrobes, living room partially separated from the dining room and fully fitted kitchen by German brand Nolte, 2 bedrooms, 2 bathrooms, study and walk-in closet. Elegantly and stylishly designed interior, wooden floors, exposed brick walls, fireplace, glass railings, safety foils in windows and entry door. 1 garage parking space, terrace available.

Good transport links: 10 minutes by tram to the Prague Castle and 15 minutes to the city center, tram stop is situated within walking distance. Wide range of public amenities including primary and English school, playground, swimming pool and hospital.



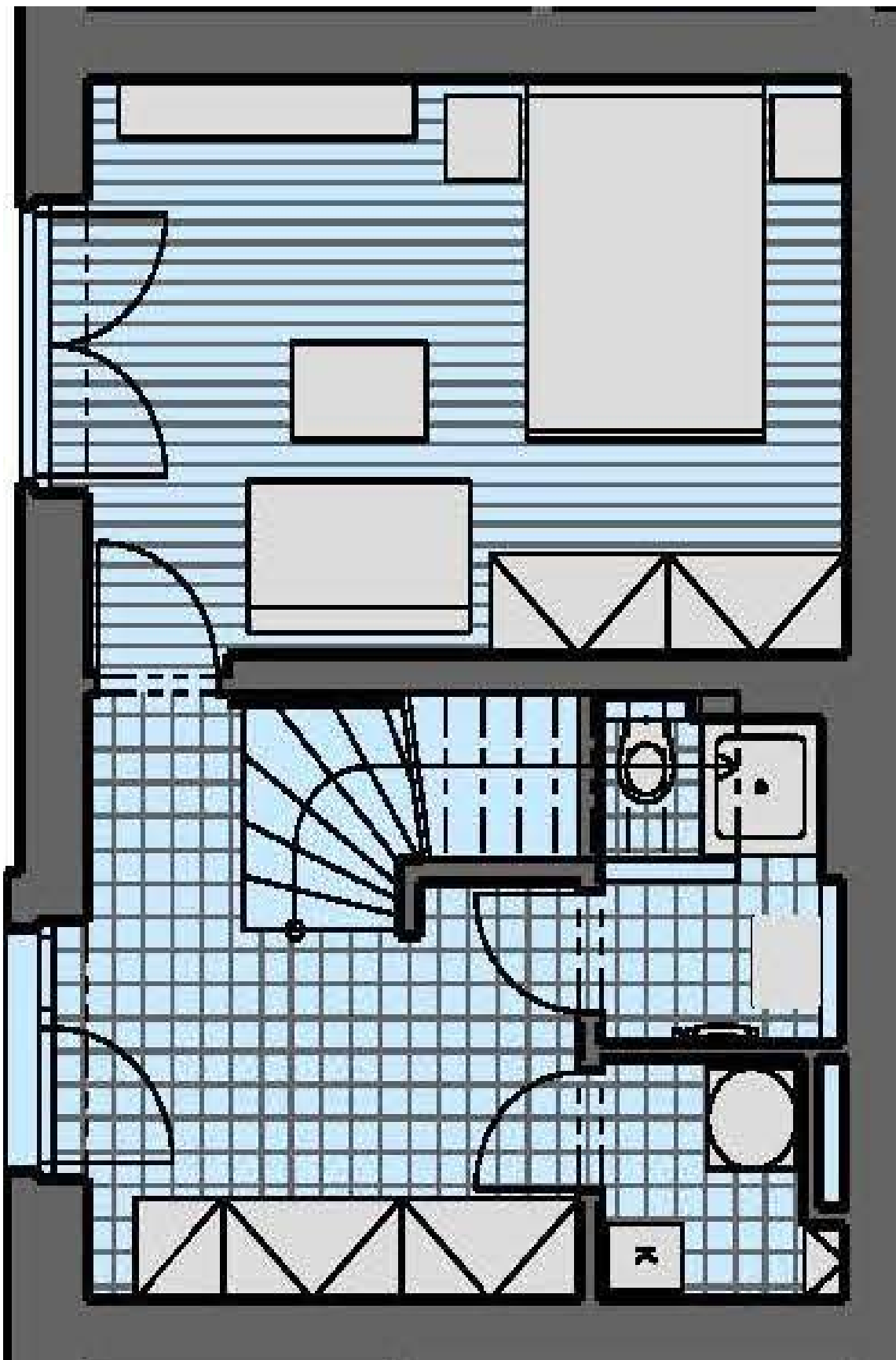
\* Area of the unit according to the Civil Code. The area consists of the sum total area of the entire unit bounded by perimeter walls.



## Apartment Three-bedroom (4+kk)

Sold

118 m<sup>2</sup>, Praha 6, Střešovice, Pod Bateriemi

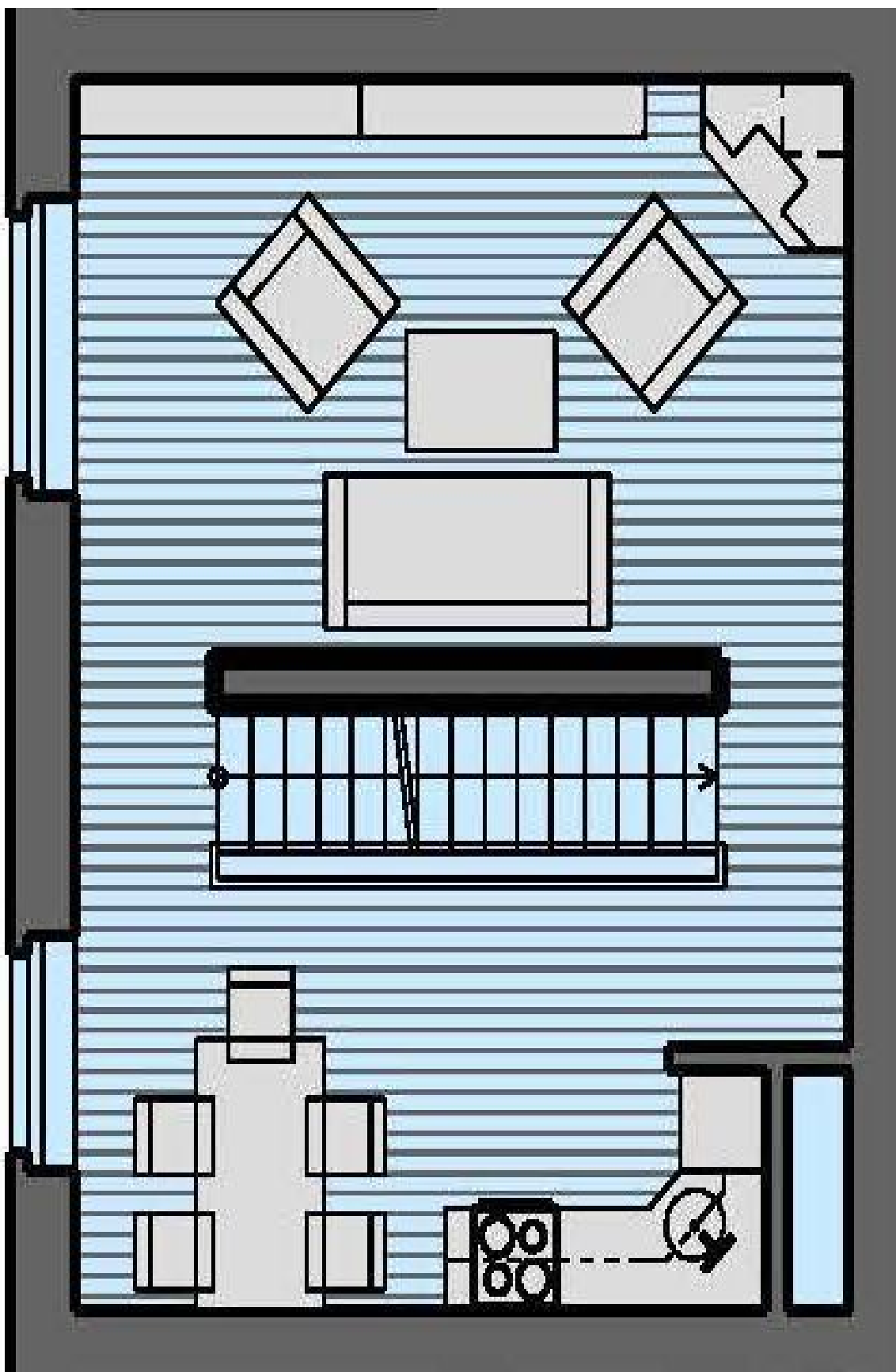




## Apartment Three-bedroom (4+kk)

118 m<sup>2</sup>, Praha 6, Střešovice, Pod Bateriemi

Sold





## Apartment Three-bedroom (4+kk)

Sold

118 m<sup>2</sup>, Praha 6, Střešovice, Pod Bateriemi

