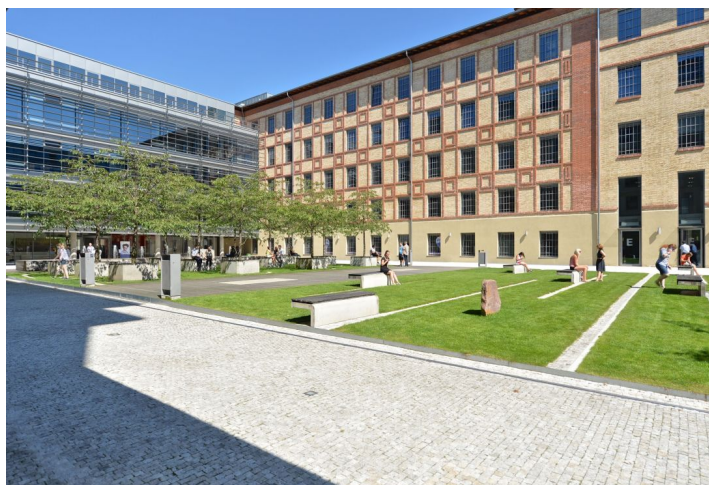
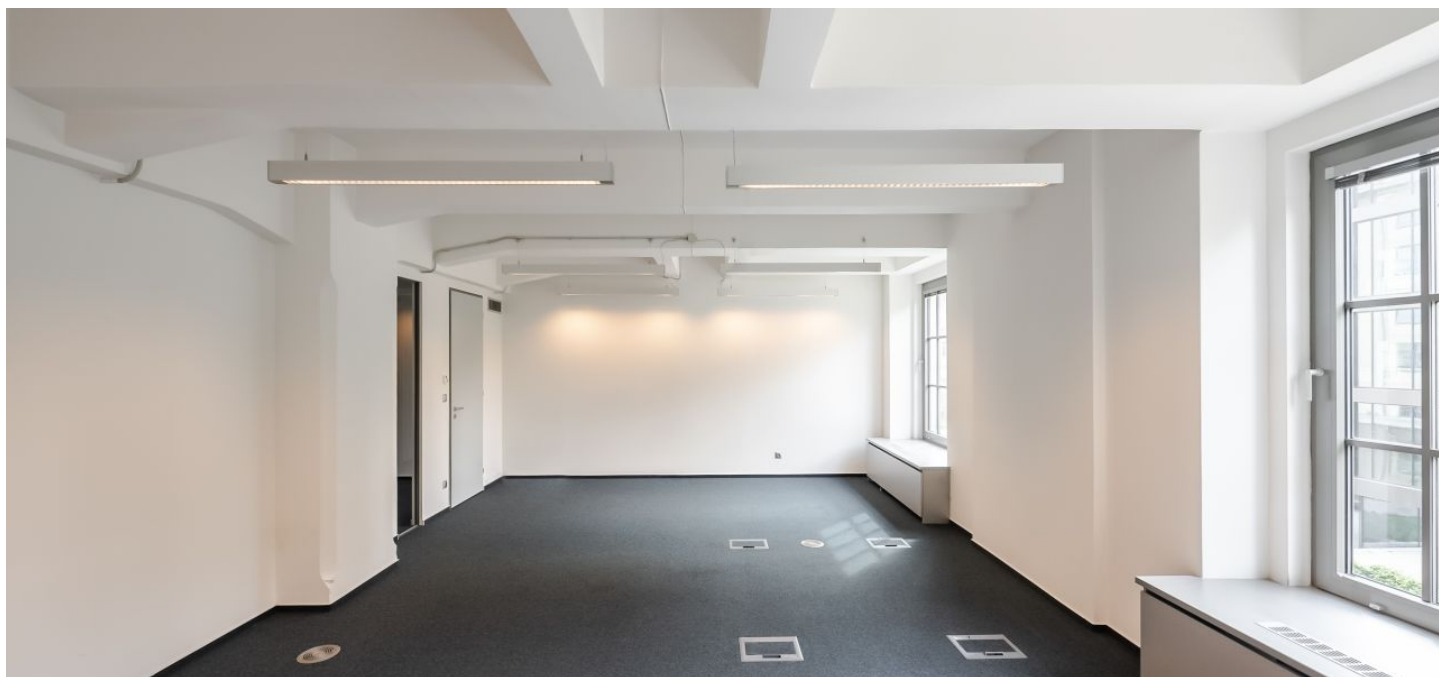




Office space

€ 15.70 / m² | CZK 398 / m²

Praha 7, Holešovice, Jankovcova



**Office space**

Praha 7, Holešovice, Jankovcova

€ 15.70 / m² | CZK 398 / m²

Service price	140 CZK monthly per m ²
Available area	564 m ²
Cellar	-
Parking	EUR 120 / ps / month
PENB	G
Reference number	16337

Office space for lease in a unique project that features combination of modern office architecture with renovated historic buildings. The attractive, well equipped offices have large windows providing wonderful views of the Vltava River.

Location:

Close to the Metro Nádraží Holešovice, Vltavská (line C) and Palmovka (line B), tram stops (Dělnická or Ortenovo náměstí) are 3 minutes walk and provide the connection to the building. Number of primary transportation routes, including access to the D1 and D8 (Berlin) highways.

Features and Services:

- Carpeted raised floor system
- Internal window shading
- Air-conditioning
- Building management system (BMS)
- CCTV for garages and external areas
- Cafés, restaurant and storage
- Fire alarm system
- Sprinklers - security surveillance systems for monitoring garage and outdoor areas
- Card access system for entering parking lot and building

Images might not accurately reflect the current state of the premises.

Rental and service charges are listed without VAT. Lessee pays no commission.

