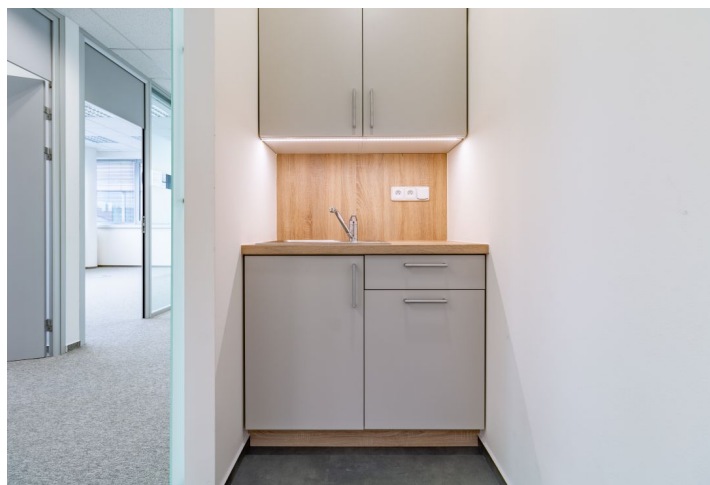
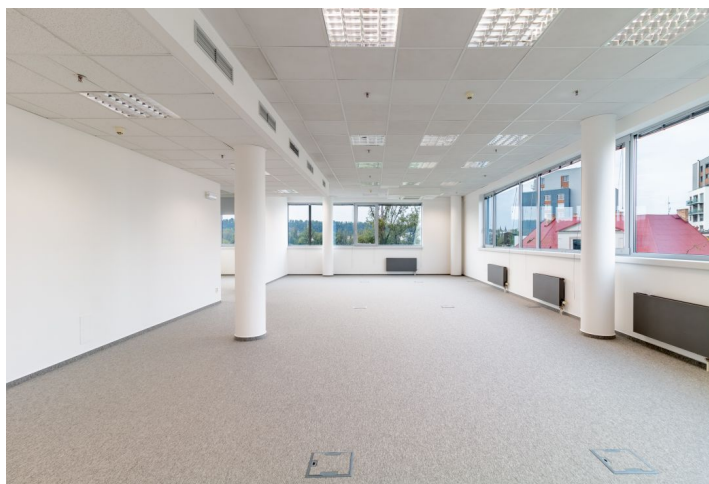
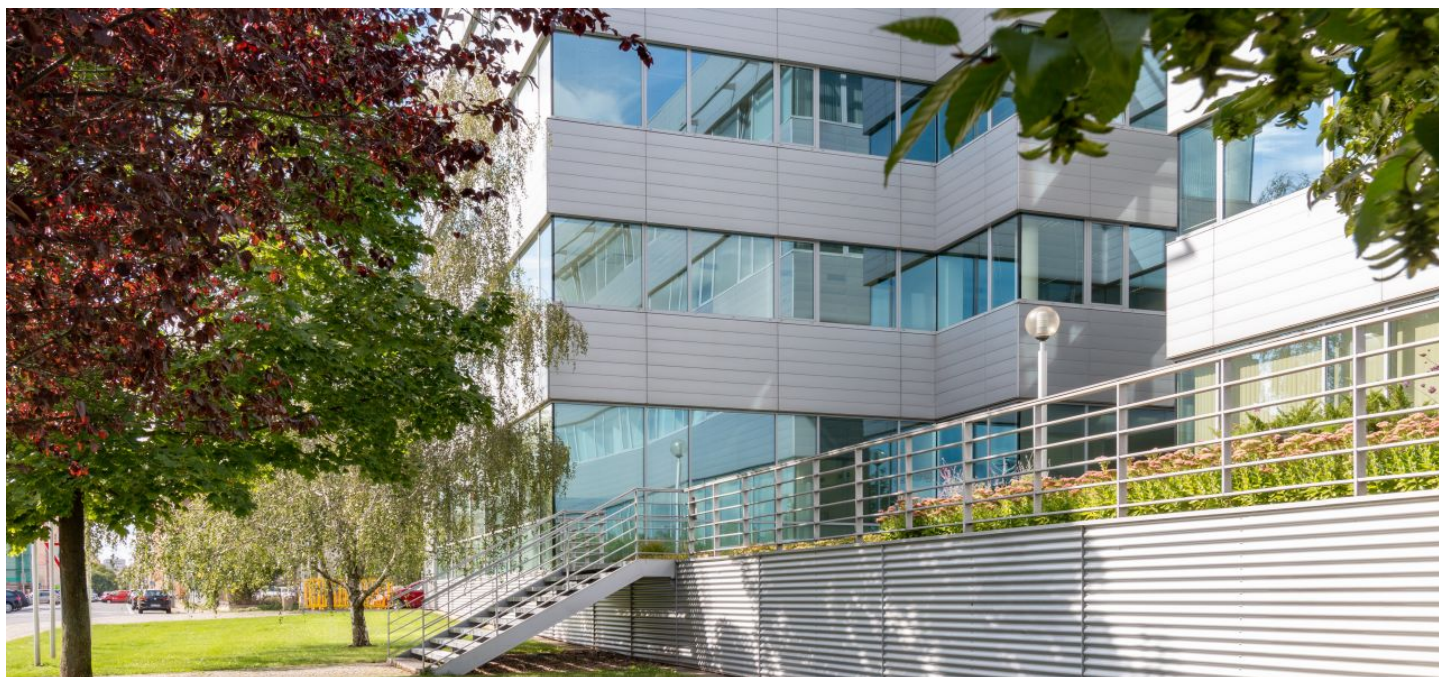




Office space

€ 15.50 / m² | CZK 390 / m²

Prague 7, Holešovice, Jankovcova



**Office space**

Prague 7, Holešovice, Jankovcova

€ 15.50 / m² | CZK 390 / m²

Service price	135 CZK monthly per m ²
Available area	829 m ²
Cellar	-
Parking	EUR 140 / ps / month
PENB	B
Reference number	16339

Office complex in Prague 7 offers office space for lease on the 3rd floor. The building, which has received international BREEAM certification at the Very Good level, consists of two towers - building A with 19 floors and the lower building B with 4 floors. The complex has a central reception, 24-hour security, underground parking and modern lifts. The complex also includes a restaurant and a café.

Location:

Great accessibility by public transport and by car - close to metro stations Vltavská (line C) and Palmovka (line B), and just a few minutes walk to tram stops Dělnická and Maniny.

Features and Services:

- Central reception
- 24-hour security service
- Air-conditioning
- CCTV
- Modern elevators
- Carpets and tiles on the floors
- Storage space
- Underground garage parking
- Restaurant and café

Images might not accurately reflect the current state of the premises.

Rental and service charges listed without VAT. Lessee pays no commission.

