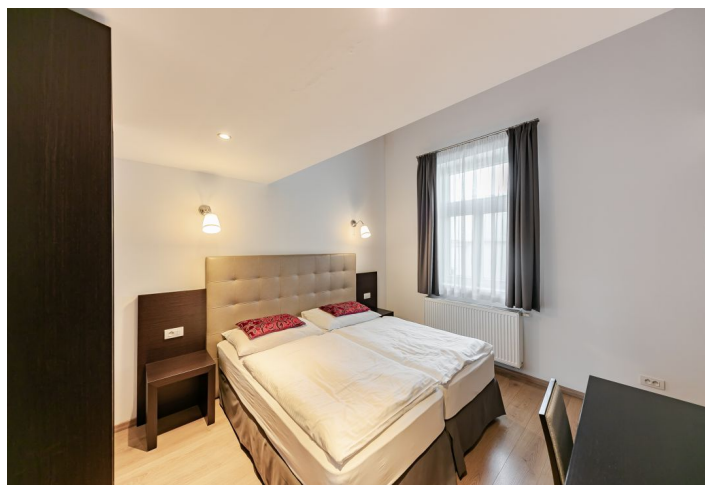




Apartment Two-bedroom (3+kk)

Rented

81 m², Prague 2, Nové Město, Resslova





Apartment Two-bedroom (3+kk)

Rented

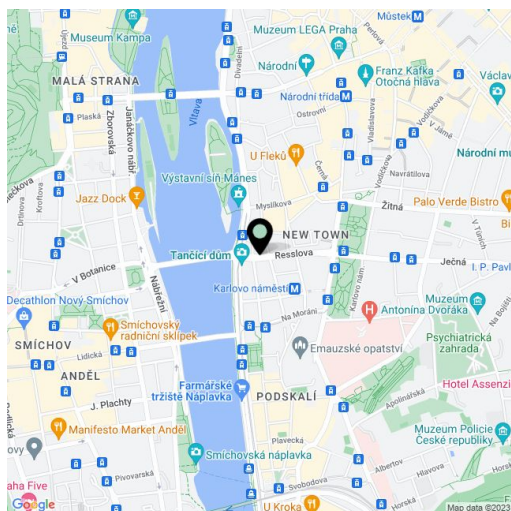
81 m², Prague 2, Nové Město, Resslova

Total area	81 m ²
Parking	-
Cellar	-
PENB	G
Reference number	16354
Available from	Immediately

Reconstructed furnished 2-bedroom 2-bathroom split-level attic flat on the fifth floor of a fully refurbished traditional building with a lift and preserved original features. Centrally located just 200 m from the Vltava embankment, a two minute walk to Karlovo náměstí metro station and tram links, and within walking distance of Wenceslas Square.

Lower level: living room with a fully fitted open kitchen, one bedroom, bathroom with tub, bidet and toilet, entry hall. Upper level: one bedroom, shower bathroom with bidet and toilet.

High ceilings, air-conditioning, security door, floating floors. Common building charges and utilities CZK 5000/month.



* Area of the unit according to the Civil Code. The area consists of the sum total area of the entire unit bounded by perimeter walls.