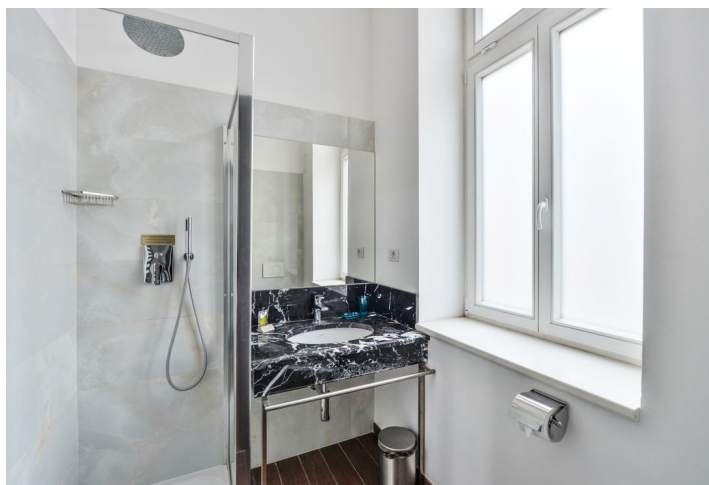
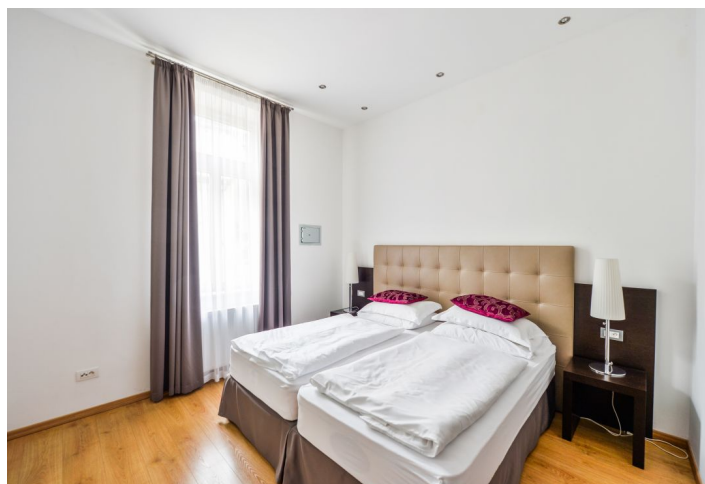




Apartment One-bedroom (2+kk)

Rented

69 m², Praha 2, Nové Město, Resslova





Apartment One-bedroom (2+kk)

Rented

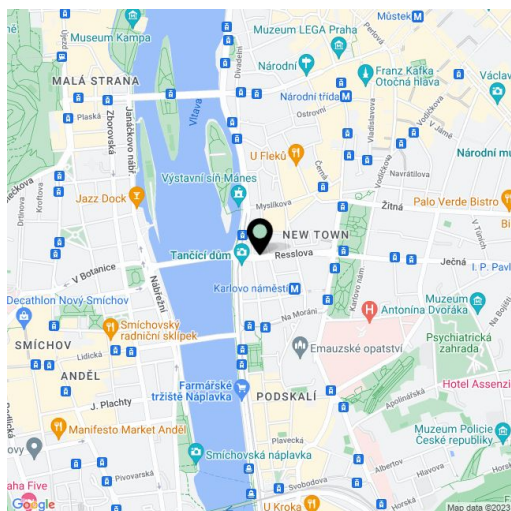
69 m², Praha 2, Nové Město, Resslova

Total area	69 m ²
Parking	-
Cellar	-
PENB	G
Reference number	16355
Available from	Immediately

This reconstructed, bright furnished 1-bedroom 2-bathroom apartment is on the fourth floor of a fully refurbished traditional building with an elevator and preserved original features. Centrally located just 200 m from the Vltava embankment, a two-minute walk to the Karlovo náměstí metro station and tram links and within walking distance of Wenceslas Square.

The apartment includes a large living room with a fully fitted open plan kitchen, one bedroom with an open walk-in closet and a shower bathroom with a toilet, a second shower bathroom with a bidet and toilet, and a spacious entry hall.

High ceilings, airy rooms, air-conditioning, security door, floating floors. Common building charges and utilities CZK 7,000/month.



* Area of the unit according to the Civil Code. The area consists of the sum total area of the entire unit bounded by perimeter walls.