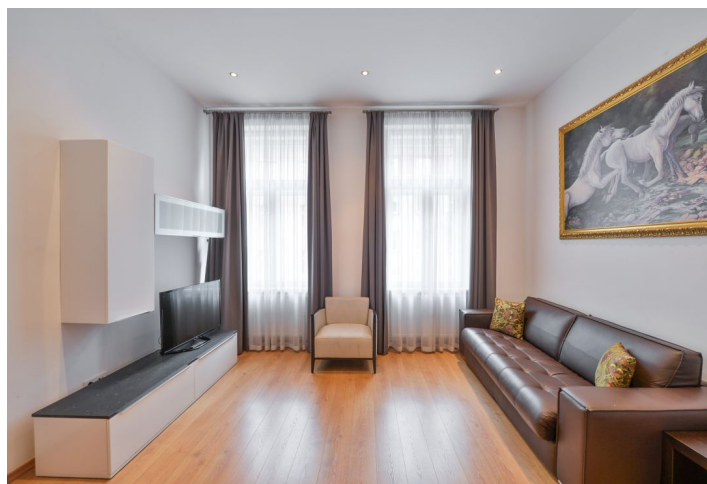




Apartment One-bedroom (2+kk)

€ 1 109 | CZK 28 000

58.2 m², Prague 2, Nové Město, Resslova





Apartment One-bedroom (2+kk)

€ 1 109 | CZK 28 000

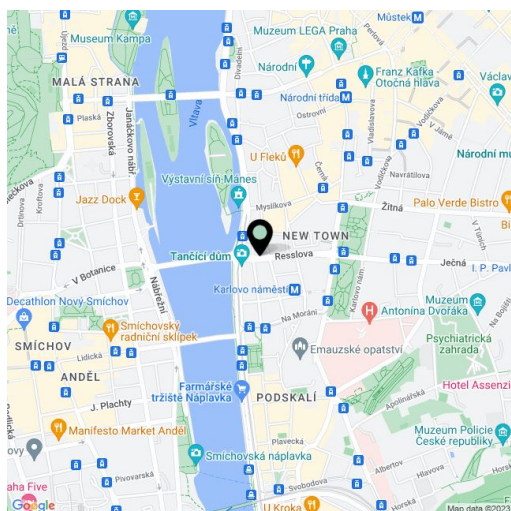
58.2 m², Prague 2, Nové Město, Resslova

Total area	58 m ²
Parking	-
Cellar	-
Service price	Common building charges and utilities CZK 9,500/month.
PENB	G
Reference number	16374
Available from	Immediately

This reconstructed, furnished apartment with views of the surrounding historic buildings is situated on the first floor of a fully refurbished traditional building with an elevator and preserved original features. Centrally located just 200 m from the Vltava embankment, a two-minute walk to the Karlovo náměstí metro station and tram stops, and within walking distance of Wenceslas Square.

The apartment includes a living room with a fully fitted open plan kitchen, one bedroom, a shower bathroom with a toilet, and an entry hall.

High ceilings, security door, floating floors, two TVs, video entry phone, fold out sofa, washer/dryer, dishwasher, toaster, coffee maker, bed linen, towels. Available for short term at a higher rent.



* Area of the unit according to the Civil Code. The area consists of the sum total area of the entire unit bounded by perimeter walls.