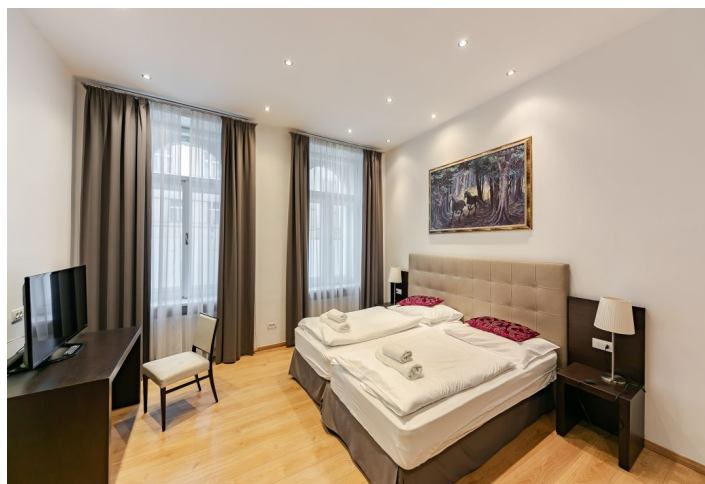




Apartment Two-bedroom (3+1)

€ 1722 | CZK 42 000

104.4 m², Prague 2, Nové Město, Resslova





Apartment Two-bedroom (3+1)

€ 1 722 | CZK 42 000

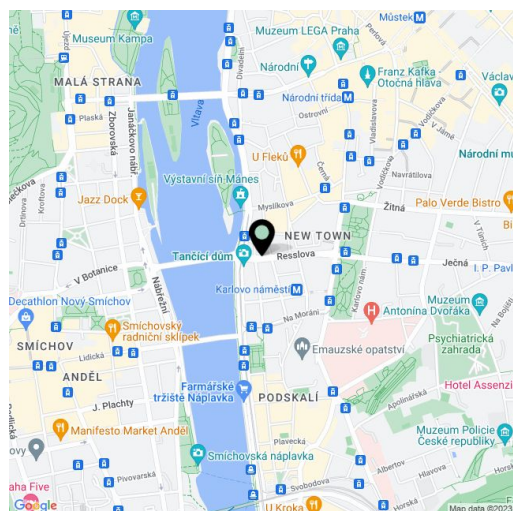
104.4 m², Prague 2, Nové Město, Resslova

Total area	104 m ²
Parking	-
Cellar	-
Service price	Common building charges and utilities CZK 10,500 per month.
PENB	G
Reference number	16377
Available from	Immediately

This reconstructed, furnished 2-bedroom apartment with views of the surrounding historic buildings is situated on the ground floor of a fully refurbished traditional building with an elevator and preserved original features. Centrally located just 200 m from the Vltava embankment, a two-minute walk to the Karlovo náměstí metro station and tram links and within walking distance of Wenceslas Square.

The apartment includes a corner living room, a fully fitted separate kitchen with no windows, two bedrooms, and a bathroom with tub, bidet, and toilet.

High ceilings, security door, floating floors, three TVs, video entry phone, fold-out sofa, washer/dryer, dishwasher, toaster, coffee maker, bed linen, towels. Available for short-term at a higher rent. Available from June 2023.



* Area of the unit according to the Civil Code. The area consists of the sum total area of the entire unit bounded by perimeter walls.