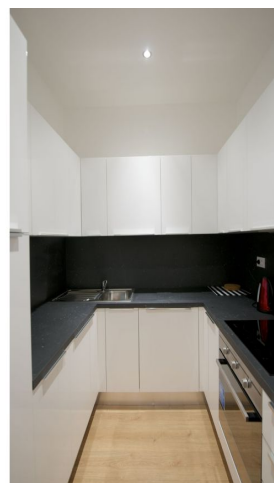




Apartment Two-bedroom (3+kk)

Rented

70.4 m², Prague 2, Nové Město, Resslova





Apartment Two-bedroom (3+kk)

Rented

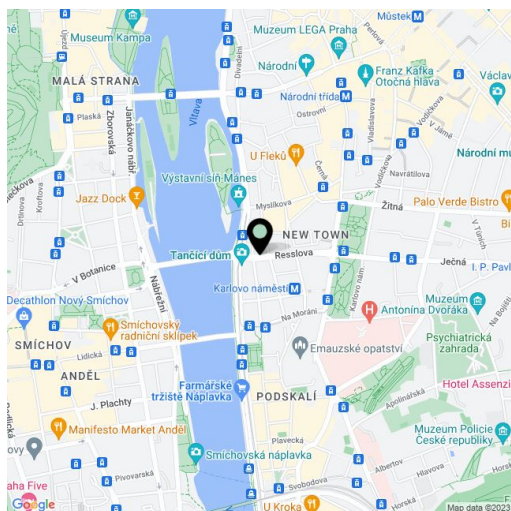
70.4 m², Prague 2, Nové Město, Resslova

Total area	70 m ²
Parking	-
Cellar	-
PENB	G
Reference number	16378
Available from	Immediately

Reconstructed furnished 2-bedroom flat with views of the surrounding historic buildings situated on the ground floor of a fully refurbished traditional building with a lift and preserved original features. Centrally located just 200 m from the Vltava embankment, a two minute walk to Karlovo náměstí metro station and tram links, and within walking distance of Wenceslas Square.

The apartment includes living room with a fully fitted open kitchen, two bedrooms, shower bathroom with toilet, and entry hall.

High ceilings, security door, floating floors, two TVs, video entry phone, Internet, fold out sofa, washer/dryer, dishwasher, toaster, coffee maker, bed linen, towels. Common building charges and utilities CZK 4,500 per month. Available for short term at a higher rent.



* Area of the unit according to the Civil Code. The area consists of the sum total area of the entire unit bounded by perimeter walls.