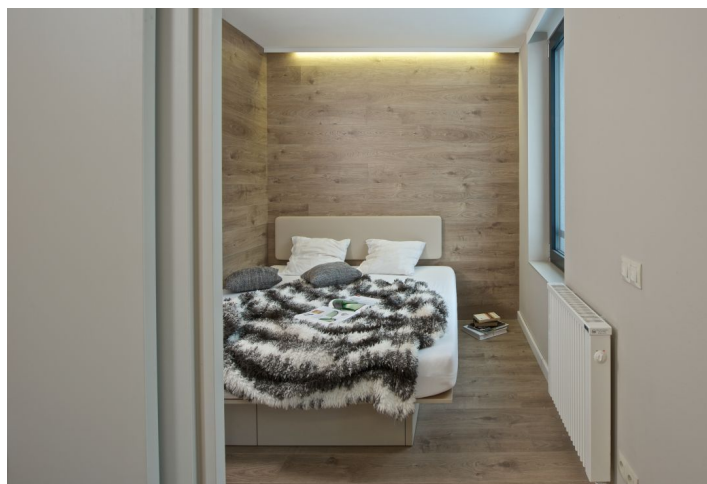




Apartment One-bedroom (2+kk)

Sold

44 m², Semily, Rokytnice nad Jizerou, Rokytnice nad Jizerou





Apartment One-bedroom (2+kk)

Sold44 m², Semily, Rokytnice nad Jizerou, Rokytnice nad Jizerou

Total area	49 m ²
Floor area*	44 m ²
Balcony	5 m ²
Parking	Yes
Garage	Yes
Cellar	Yes
PENB	G
Reference number	16443

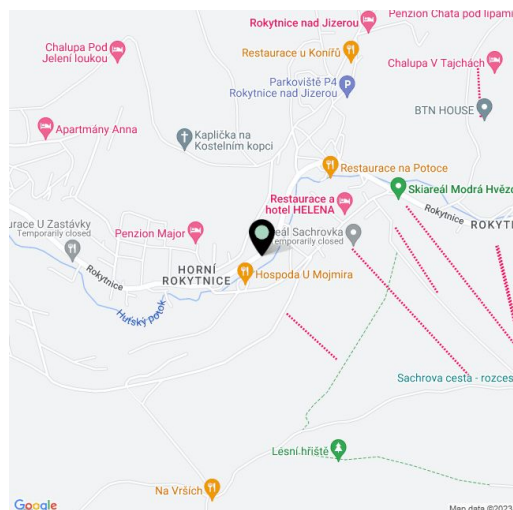
New ski apartment in the sought after winter resort town of Rokytnice nad Jizerou, a short walk from the cableway to the top of Lysá hora Mountain, suitable for family recreation or as an investment opportunity for short or long-term lease.

This modern, family-type apartment situated on the ground floor offers 2 rooms, bathroom and hallway. The whole house is designed as a mountain residence with equipment meeting current requirements on recreational housing. The location of Rokytnice is known for its various slopes for all types of skiers, high-quality cross country trails and other sporting and cultural opportunities, including summer tourism (hiking, biking, extreme sports). The town boasts a number of shops, services, restaurants, cafes and clubs. Excellent transport links to and from Prague.

Possibility to purchase **ski boxes for CZK 42 350**, **garage parking space for CZK 363 000** or **outdoor parking space for CZK 181 500**.

Interior 49,4 m².

Price of the apartment is subject to VAT.



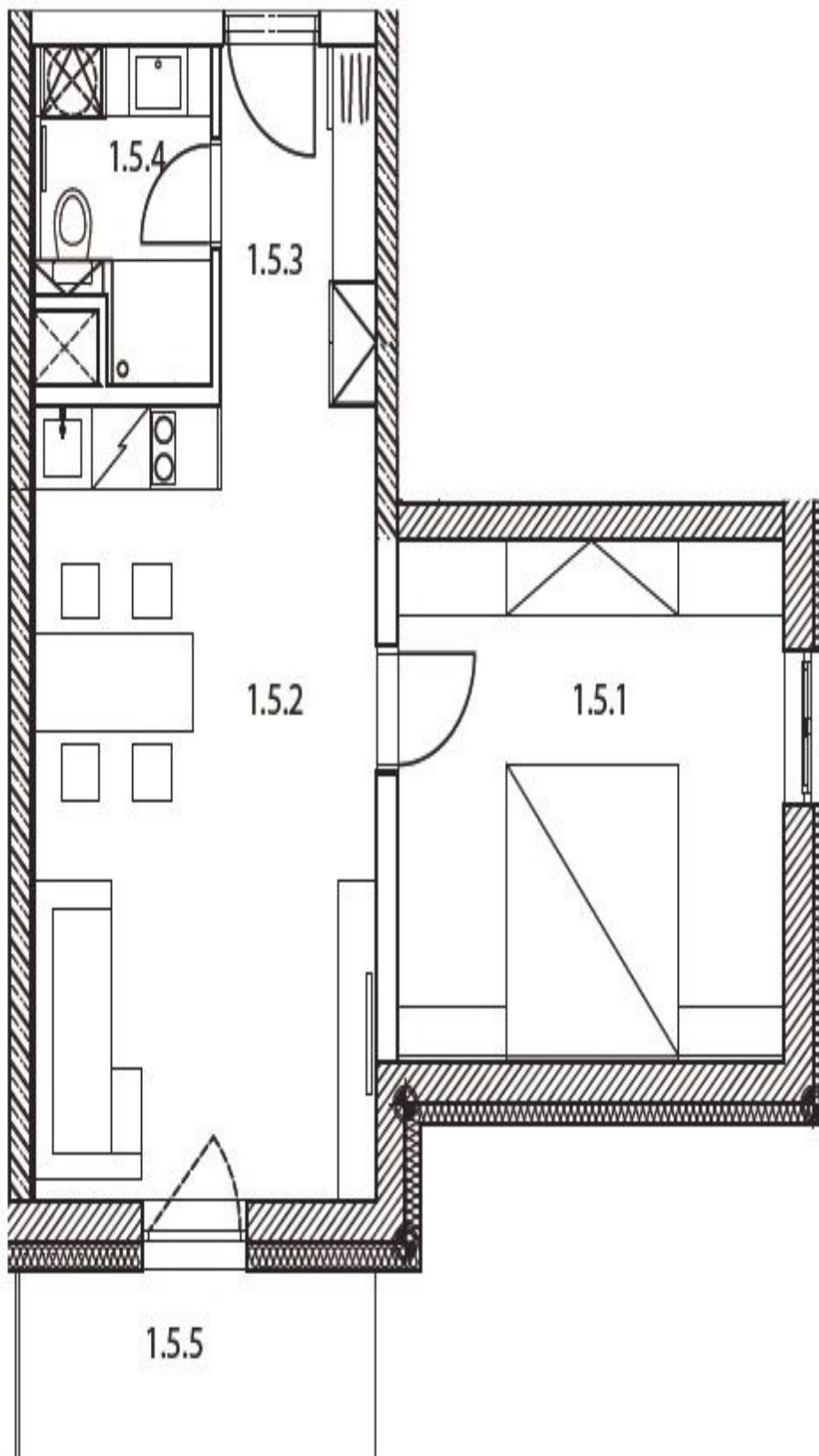
* Area of the unit according to the Civil Code. The area consists of the sum total area of the entire unit bounded by perimeter walls.



Apartment One-bedroom (2+kk)

Sold

44 m², Semily, Rokytnice nad Jizerou, Rokytnice nad Jizerou





Apartment One-bedroom (2+kk)

Sold

44 m², Semily, Rokytnice nad Jizerou, Rokytnice nad Jizerou

Byt 1.5

1.NP

2+kk + balkon

užitná plocha

43,6 m²

celková podlahová plocha vč. balkonu

49,4 m²

Číslo	Místnost	Výměra [m ²]
1.5.1	Pokoj	15,1
1.5.2	Pokoj	20,4
1.5.3	Chodba	4,2
1.5.4	Koupelna	3,9
1.5.5	Balkon	5,0



Apartment One-bedroom (2+kk)

Sold

44 m², Semily, Rokytnice nad Jizerou, Rokytnice nad Jizerou

