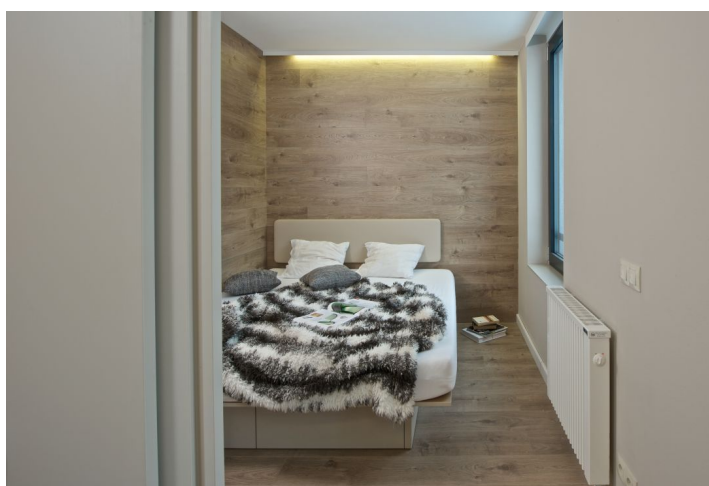




## Apartment One-bedroom (2+kk)

Sold

50 m<sup>2</sup>, Semily, Rokytnice nad Jizerou, Rokytnice nad Jizerou





## Apartment One-bedroom (2+kk)

**Sold**50 m<sup>2</sup>, Semily, Rokytnice nad Jizerou, Rokytnice nad Jizerou

Total area	50 m <sup>2</sup>
Parking	1 garage parking space
Garage	Yes
Cellar	Yes
PENB	G
Reference number	16450

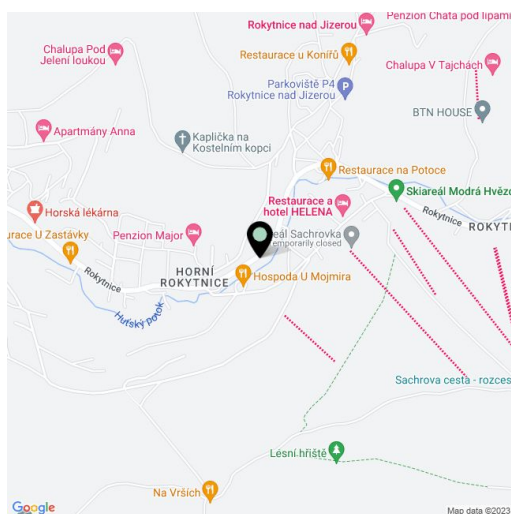
**New ski apartment in the sought after winter resort town of Rokytnice nad Jizerou, a short walk from the cableway to the top of Lysá hora Mountain, suitable for family recreation or as an investment opportunity for short or long-term lease.**

This modern, family-type apartment situated on the first floor offers 2 rooms, bathroom and hallway. The whole house is designed as a mountain residence with equipment meeting current requirements on recreational housing. The location of Rokytnice is known for its various slopes for all types of skiers, high-quality cross country trails and other sporting and cultural opportunities, including summer tourism (hiking, biking, extreme sports). The town boasts a number of shops, services, restaurants, cafes and clubs. Excellent transport links to and from Prague.

Possibility to purchase **ski boxes for CZK 42 350**, **garage parking space for CZK 363 000** or **outdoor parking space for CZK 181 500**.

Photos are from the show flat.

Interior 49,5 m<sup>2</sup>.



\* Area of the unit according to the Civil Code. The area consists of the sum total area of the entire unit bounded by perimeter walls.



## Apartment One-bedroom (2+kk)

Sold

50 m<sup>2</sup>, Semily, Rokytnice nad Jizerou, Rokytnice nad Jizerou





## Apartment One-bedroom (2+kk)

50 m<sup>2</sup>, Semily, Rokytnice nad Jizerou, Rokytnice nad Jizerou

Sold



Umístění bytu v patře

**Apartment One-bedroom (2+kk)****Sold**50 m<sup>2</sup>, Semily, Rokytnice nad Jizerou, Rokytnice nad Jizerou**Byt 2.4****2.NP****2+kk****užitná plocha****48,2 m<sup>2</sup>****celková podlahová plocha****49,5 m<sup>2</sup>**

Číslo	Místnost	Výměra [m <sup>2</sup> ]
2.4.1	Pokoj	22,7
2.4.2	Pokoj	14,1
2.4.3	Chodba	6,6
2.4.4	Koupelna	4,8