



Apartment Three-bedroom (4+kk)

Sold

124 m², Semily, Rokytnice nad Jizerou, Rokytnice nad Jizerou





Apartment Three-bedroom (4+kk)

Sold124 m², Semily, Rokytnice nad Jizerou, Rokytnice nad Jizerou

Total area	124 m ²
Parking	Yes
Cellar	Yes
PENB	G
Reference number	16455

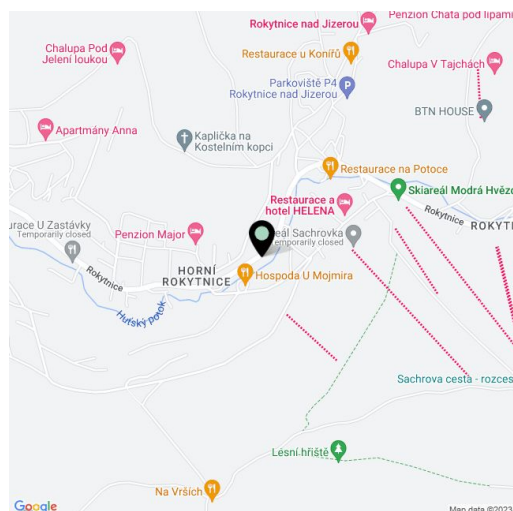
New apartment with preparation for a sauna and whirlpool in the sought after winter resort town of Rokytnice nad Jizerou, a short walk from a chairlift that goes to the top of Lysá hora mountain. Suitable for family recreation or as an investment opportunity for short or long-term lease.

This modern, family-type loft apartment situated on the second floor offers 2 rooms, an attic, bathroom and hallway. The whole house is designed as a mountain residence with equipment meeting current requirements on recreational housing. The location of Rokytnice is known for its various slopes for all types of skiers, high-quality cross country trails and other sporting and cultural opportunities, including summer tourism (hiking, biking, extreme sports). The town boasts a number of shops, services, restaurants, cafes and clubs. Excellent transport links to and from Prague.

Possibility to purchase ski boxes for CZK 35 000, garage parking space for CZK 300 000 or outdoor parking space for CZK 150 000.

Interior 123,9 m², usable area calculated from height 1,3 m is 100,6 m².

Prices are subject to VAT. Photographs are from the show flat and the equipment displayed incl. sauna and whirlpool is not included in the price.



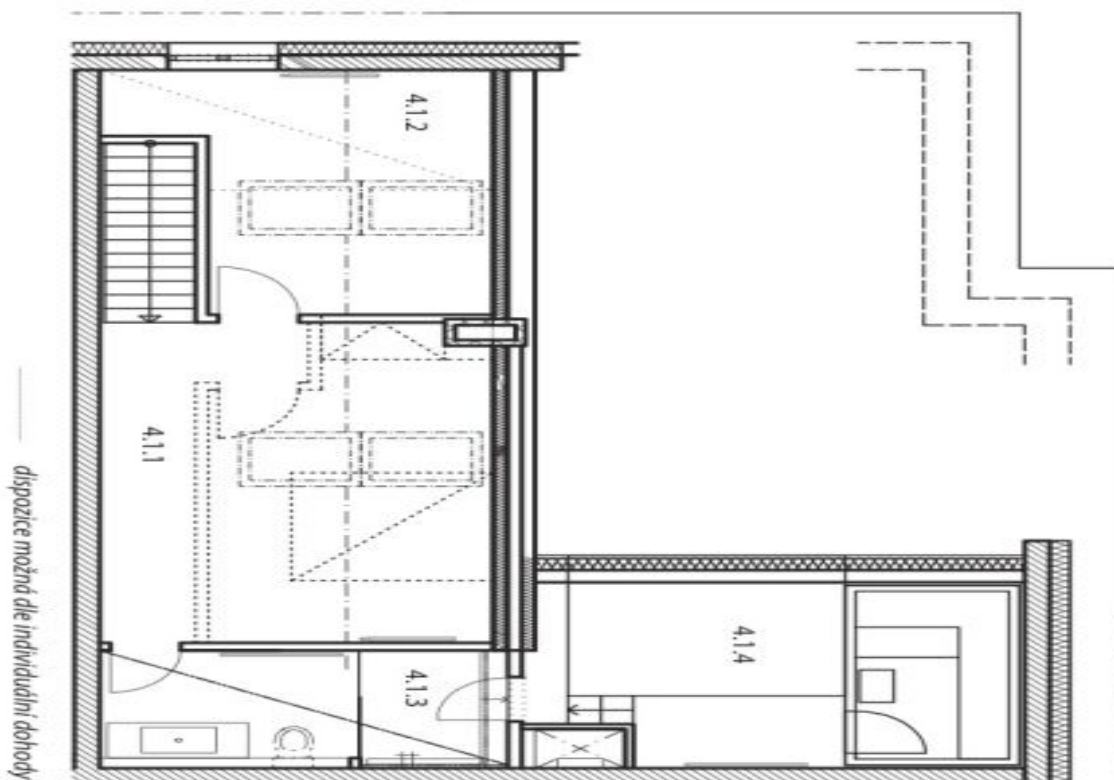
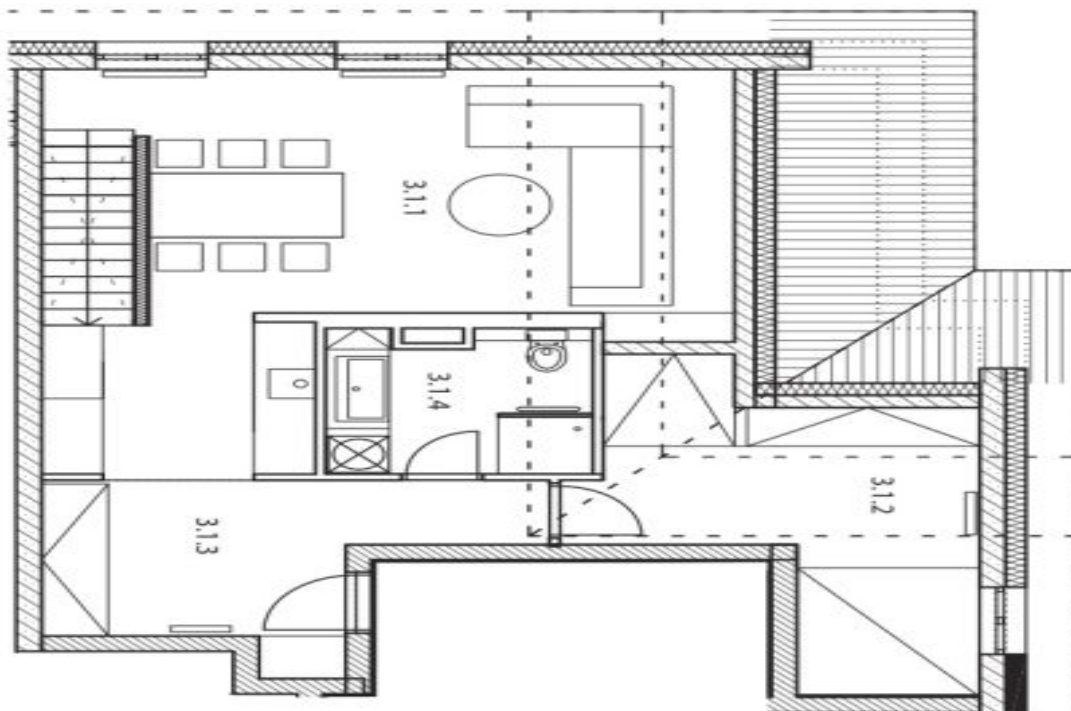
* Area of the unit according to the Civil Code. The area consists of the sum total area of the entire unit bounded by perimeter walls.



Apartment Three-bedroom (4+kk)

Sold

124 m², Semily, Rokytnice nad Jizerou, Rokytnice nad Jizerou



**Apartment Three-bedroom (4+kk)****Sold**124 m², Semily, Rokytnice nad Jizerou, Rokytnice nad Jizerou

3.NP,4.NP	
4+kk + SPA	
užitná plocha 3.NP	58,9 m ²
užitná plocha 4.NP	41,7 m ²
celkem	100,6 m²
celková podl. plocha 3.NP	66,7 m ²
celková podl. plocha 4.NP	57,2 m ²
celkem	123,9 m²
1:100	
užitná plocha počítána od výšky 1,3m	



Číslo	Místnost	Užitná plocha [m ²]
3.1.1	Pokoj	31,5
3.1.2	Pokoj	11,2
3.1.3	Chodba	10,3
3.1.4	Koupelna	5,9
4.1.1	Pokoj	17,0
4.1.2	Pokoj	9,6
4.1.3	Koupelna	7,9
4.1.4	SPA	7,2



Apartment Three-bedroom (4+kk)

Sold

124 m², Semily, Rokytnice nad Jizerou, Rokytnice nad Jizerou

