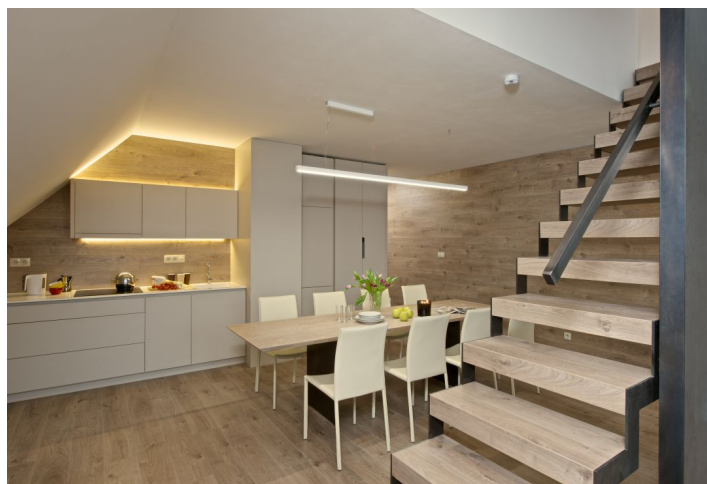




## Apartment Three-bedroom (4+kk)

Sold

154 m<sup>2</sup>, Semily, Rokytnice nad Jizerou, Rokytnice nad Jizerou





## Apartment Three-bedroom (4+kk)

**Sold**154 m<sup>2</sup>, Semily, Rokytnice nad Jizerou, Rokytnice nad Jizerou

Total area	154 m <sup>2</sup>
Parking	1 garage parking space
Garage	Yes
Cellar	Yes
PENB	G
Reference number	16457

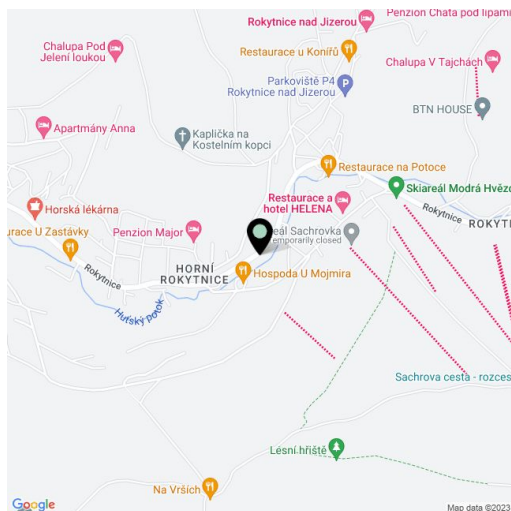
**New ski apartment in the sought after winter resort town of Rokytnice nad Jizerou, a short walk from the cableway to the top of Lysá hora Mountain, suitable for family recreation or as an investment opportunity for short or long-term lease.**

This modern, family-type loft apartment situated on the second floor offers 2 rooms and attic, bathroom, separated toilet and hallway. The whole house is designed as a mountain residence with equipment meeting current requirements on recreational housing. The location of Rokytnice is known for its various slopes for all types of skiers, high-quality cross country trails and other sporting and cultural opportunities, including summer tourism (hiking, biking, extreme sports). The town boasts a number of shops, services, restaurants, cafes and clubs. Excellent transport links to and from Prague.

Possibility to purchase **ski boxes for CZK 42 350, garage parking space for CZK 363 000 or outdoor parking space for CZK 181 500.**

Interior 154,3 m<sup>2</sup>, usable area 131,9 m<sup>2</sup>.

\*Usable area is calculated from height 1,3 m.



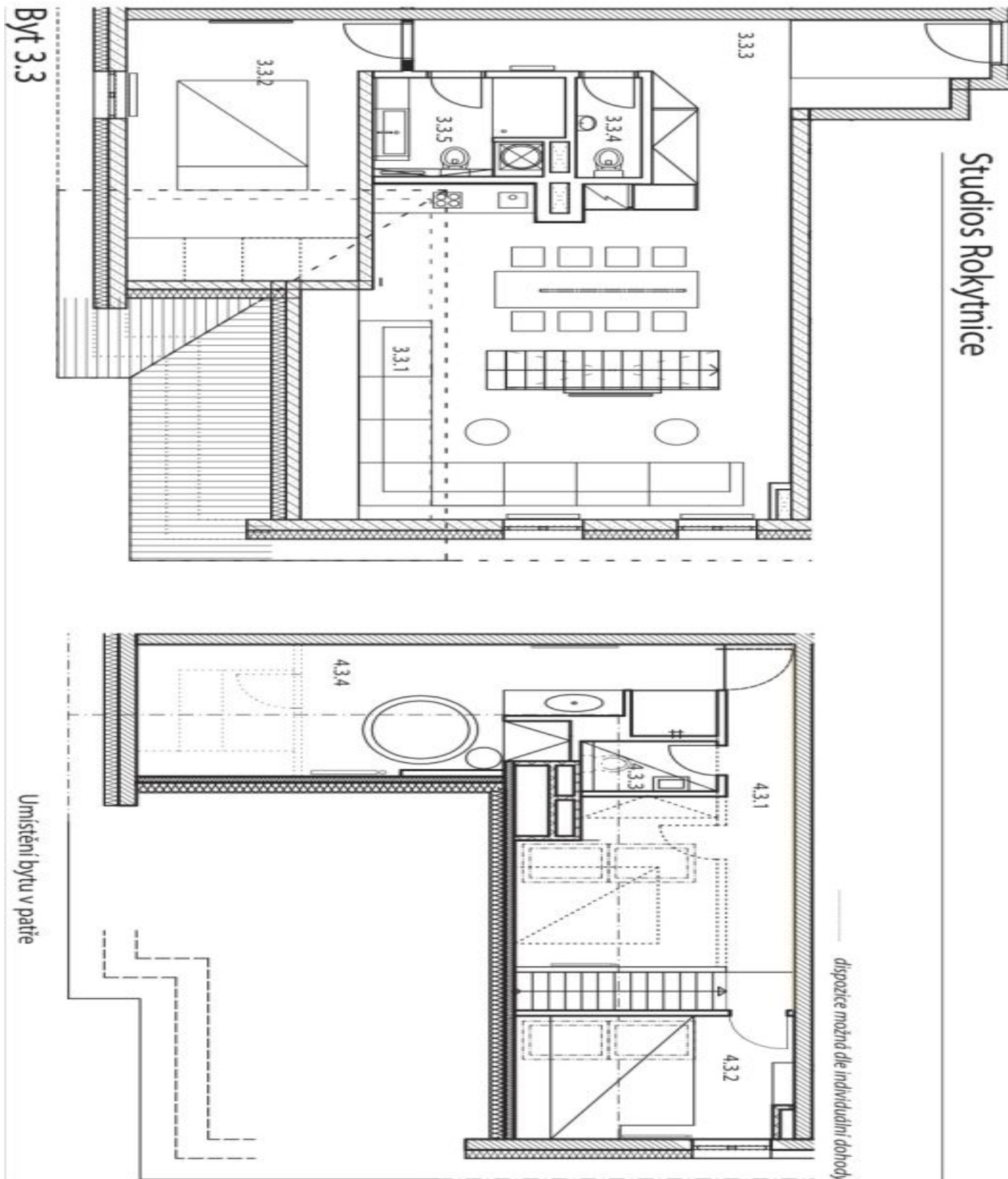
\* Area of the unit according to the Civil Code. The area consists of the sum total area of the entire unit bounded by perimeter walls.



## Apartment Three-bedroom (4+kk)

Sold

154 m<sup>2</sup>, Semily, Rokytnice nad Jizerou, Rokytnice nad Jizerou







## Apartment Three-bedroom (4+kk)

Sold

154 m<sup>2</sup>, Semily, Rokytnice nad Jizerou, Rokytnice nad Jizerou

## Byt 3.3

3.NP, 4.NP

4+kk + SPA

užitná plocha 3.NP

86,0 m<sup>2</sup>

užitná plocha 4.NP

45,9 m<sup>2</sup>

celkem

131,9 m<sup>2</sup>

celková podl. plocha 3.NP

97,3 m<sup>2</sup>

celková podl. plocha 4.NP

57,0 m<sup>2</sup>

celkem

154,3 m<sup>2</sup>

1:100

užitná plocha počítána od výšky 1,3m



Číslo	Místnost	Užitná plocha [m <sup>2</sup> ]
3.3.1	Pokoj	43,6
3.3.2	Pokoj	17,5
3.3.3	Chodba	17,2
3.3.4	WC	1,9
3.3.5	Koupelna	5,8
4.3.1	Pokoj	16,8
4.3.2	Pokoj	8,9
4.3.3	WC	2,2
4.3.4	SPA	18,0



## Apartment Three-bedroom (4+kk)

Sold

154 m<sup>2</sup>, Semily, Rokytnice nad Jizerou, Rokytnice nad Jizerou

