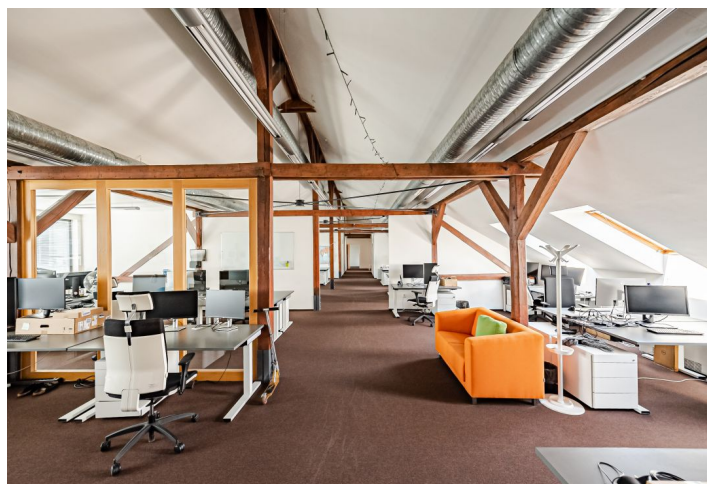




Office space

Rented

Prague 3, Strašnice, U nákladového nádraží





Office space

Rented

Prague 3, Strašnice, U nákladového nádraží

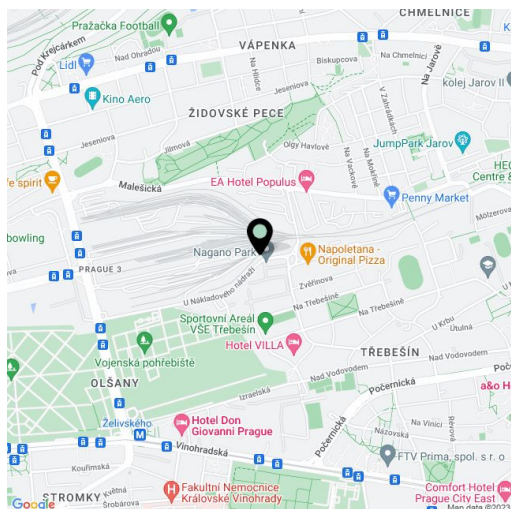
Service price	100 CZK monthly per m ²
Available area	954 m ²
Cellar	-
Parking	EUR 75 / ps / month
PENB	D
Reference number	16462

Office premises for lease on the 3rd floor in the administrative building situated in Prague 3 – Strašnice. The building is easily accessible by car and public transport – in vicinity of bus and tram stops. Želivského metro station (line A) is approx. 15-minute walk.

Features and Services:

- Flexible office layout
- Air conditioning
- Raised floors
- Suspended ceilings
- Central reception
- Security service 24/7
- Data center
- Intelligent Building Management System
- Facility management
- Meeting room
- High speed elevators
- Storage space
- Bistro, restaurant and fitness center
- Secure car parking

Rental and service charges listed without VAT. Lessee pays no commission.

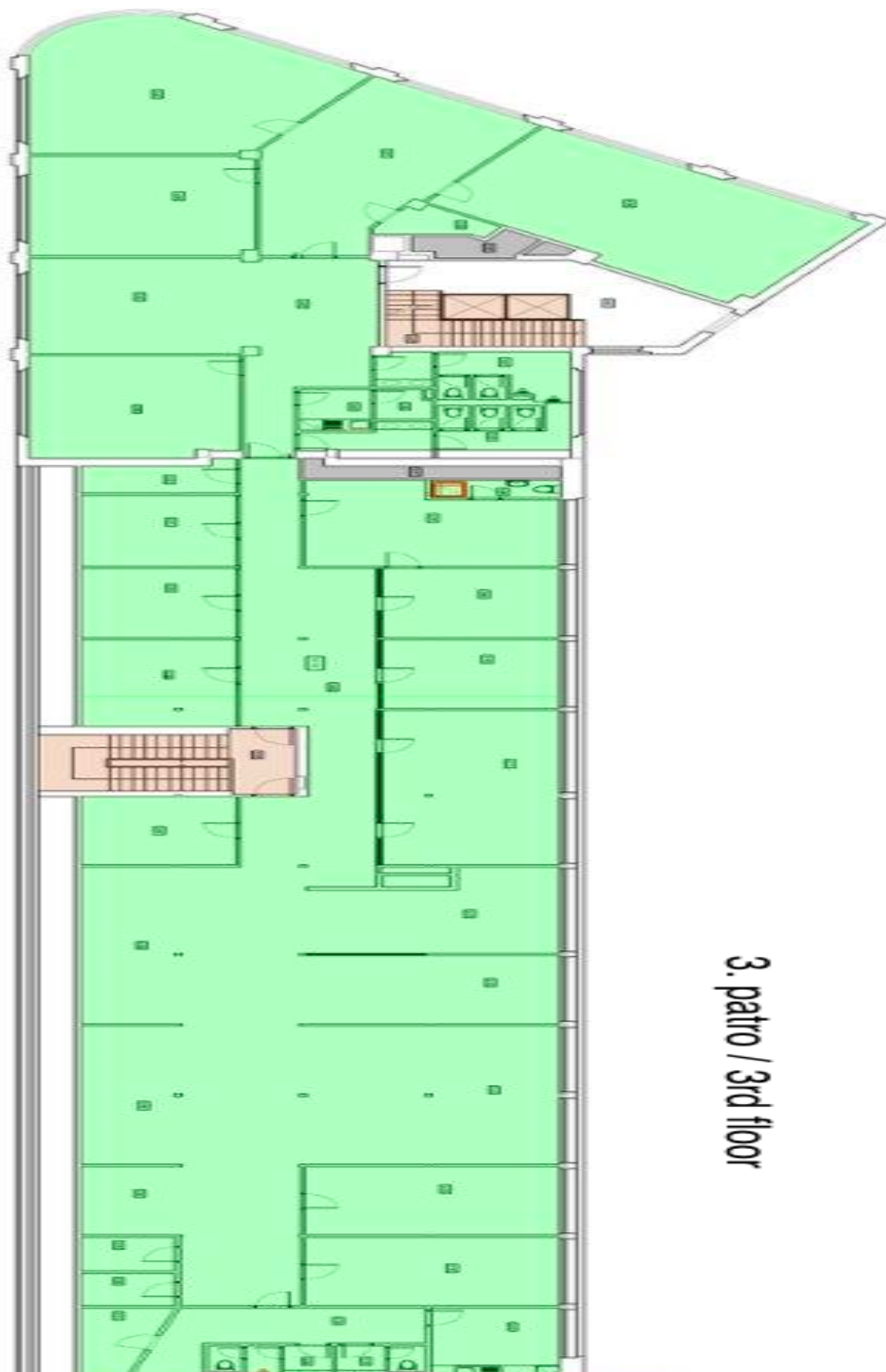




Office space

Prague 3, Strašnice, U nákladového nádraží

Rented



3. patro / 3rd floor