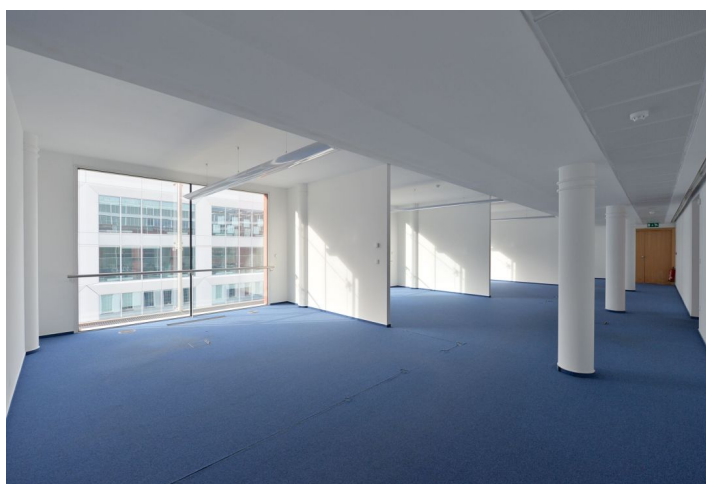
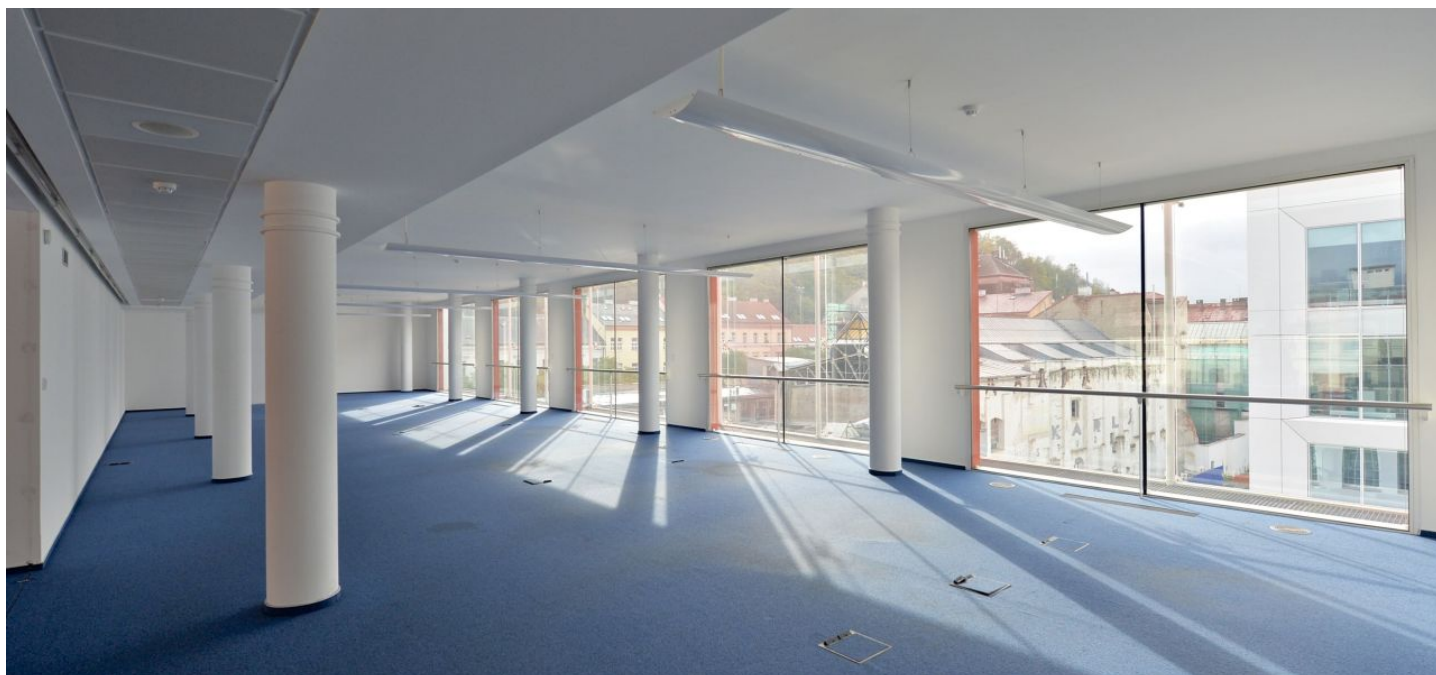




Office space

Prague 8, Karlín, Křižíkova

€ 17.00 / m² | CZK 427 / m²



**Office space**

Prague 8, Karlín, Křižíkova

€ 17.00 / m² | CZK 427 / m²

Service price	170 CZK monthly per m ²
Available area	467 m ²
Cellar	-
Parking	EUR 130 / pp / month
PENB	G
Reference number	16485

This administrative building, which originated from the revitalization of an industrial space, offers office space for lease on the 3rd floor in a popular location of Prague 8 - Karlín. The area of the former factory from the 19th century has been fully reconstructed. The creator of the project is the famous architect Ricardo Bofill; the building was awarded "Building of the Year 2001."

Location:

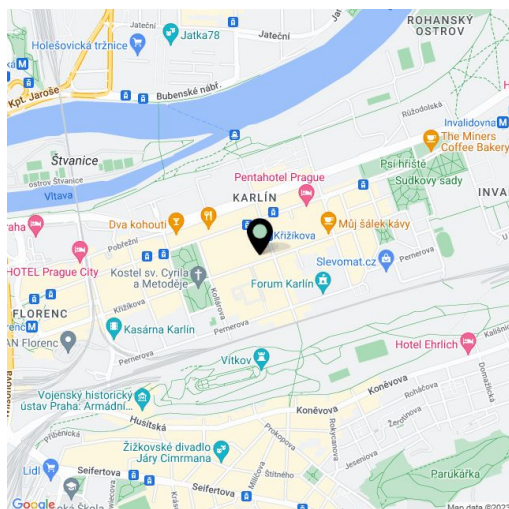
Very good accessibility by car and public transport – the Křižíkova metro station (line B) and a tram stop are just a few minutes on foot from the space; easy connection to the D8 highway, Prague ring road and the city center.

Features and Services:

- Representative reception
- 24/7 security service
- Modern lifts
- Magnetic card access
- Air-conditioning
- Lowered ceilings with integral lighting
- Central heating
- Fire alarm system
- Underground parking

Images might not accurately reflect the current state of the premises.

Rental and service charges are listed without VAT. Lessee pays no commission.





Office space

Prague 8, Karlín, Křižíkova

€ 17.00 / m² | CZK 427 / m²

