



Office building

Prague 1, Nové Město, Purkyňova

Rented





Office building

Prague 1, Nové Město, Purkyňova

Rented

Service price	101 CZK monthly per m ²
Total building area	3 755 m ²
Tenant consumption	—
Parking	7 500 CZK
Parking service charges	—
Parking ratio	—
Certification	—
PENB	G
Reference number	16490

Administrative complex on the corner of Spálená and Purkyňova streets, consisting of two buildings connected by an attractive atrium aligned with a shopping arcade and café. The original building is situated next to the Národní třída metro station (line B) and a number of tram stops, with ample public amenities in the immediate proximity.

Features include raised floors, carpets, integrated lighting in suspended ceilings, and openable plastic windows. Reception and 24/7 security available.

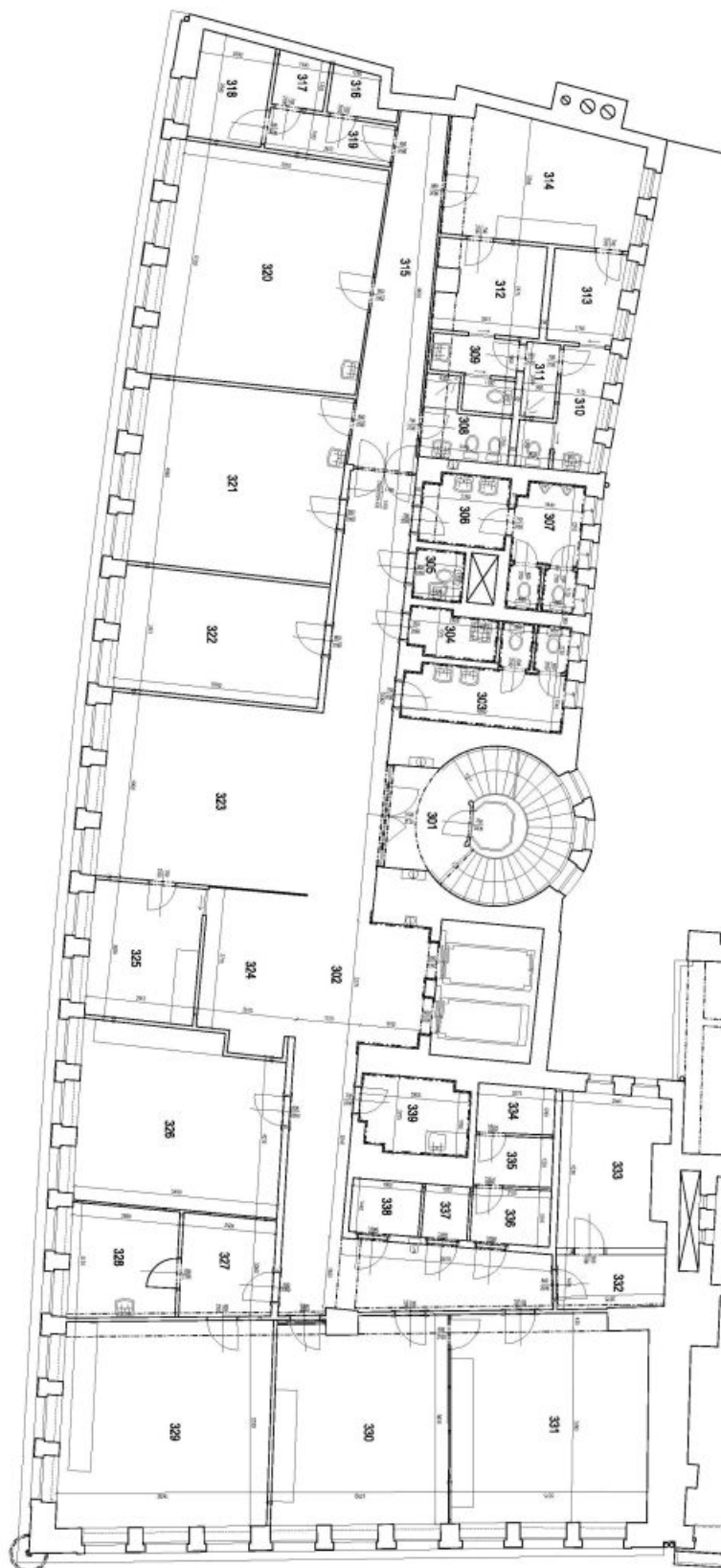
Rental and service charges listed without VAT. Lessee pays no commission.



Office building

Prague 1, Nové Město, Purkyňova

Rented





Office building

Prague 1, Nové Město, Purkyňova

Rented

