



Office building

Prague 1, Staré Město, Národní

Rented

Service price	100 CZK monthly per m ²
Total building area	603 m ²
Tenant consumption	—
Parking	170 EUR
Parking service charges	—
Parking ratio	—
Certification	—
PENB	D
Reference number	16500

Historic building situated in the heart of the city center offers in total 595 m² of office space. The exclusivity of space is enhanced by its attractive location in the financial and commercial center, with excellent access to public transportation and private parking. This newly renovated building is located just a few steps from Wenceslas Square and the Franciscan Garden. Outstanding accessibility by public transportation - directly at the Můstek metro station (line B, A), within walking distance of tram stations.

Features and Services:

Original rear historic building B renovated - the central reception area was completely rebuilt. Prior to occupation by a new tenant interior spaces, bathrooms, kitchens, elevator, etc. renovated. Reconstruction partly considering the wishes and needs of future tenants, such as lighting, etc. All office space is equipped with wiring, parquet floors. On each floor is a kitchenette and bathroom. Cellars (109.7 sq. m.) also available for adequate storage. The space boasts a courtyard, which is rebuilt into green atrium.

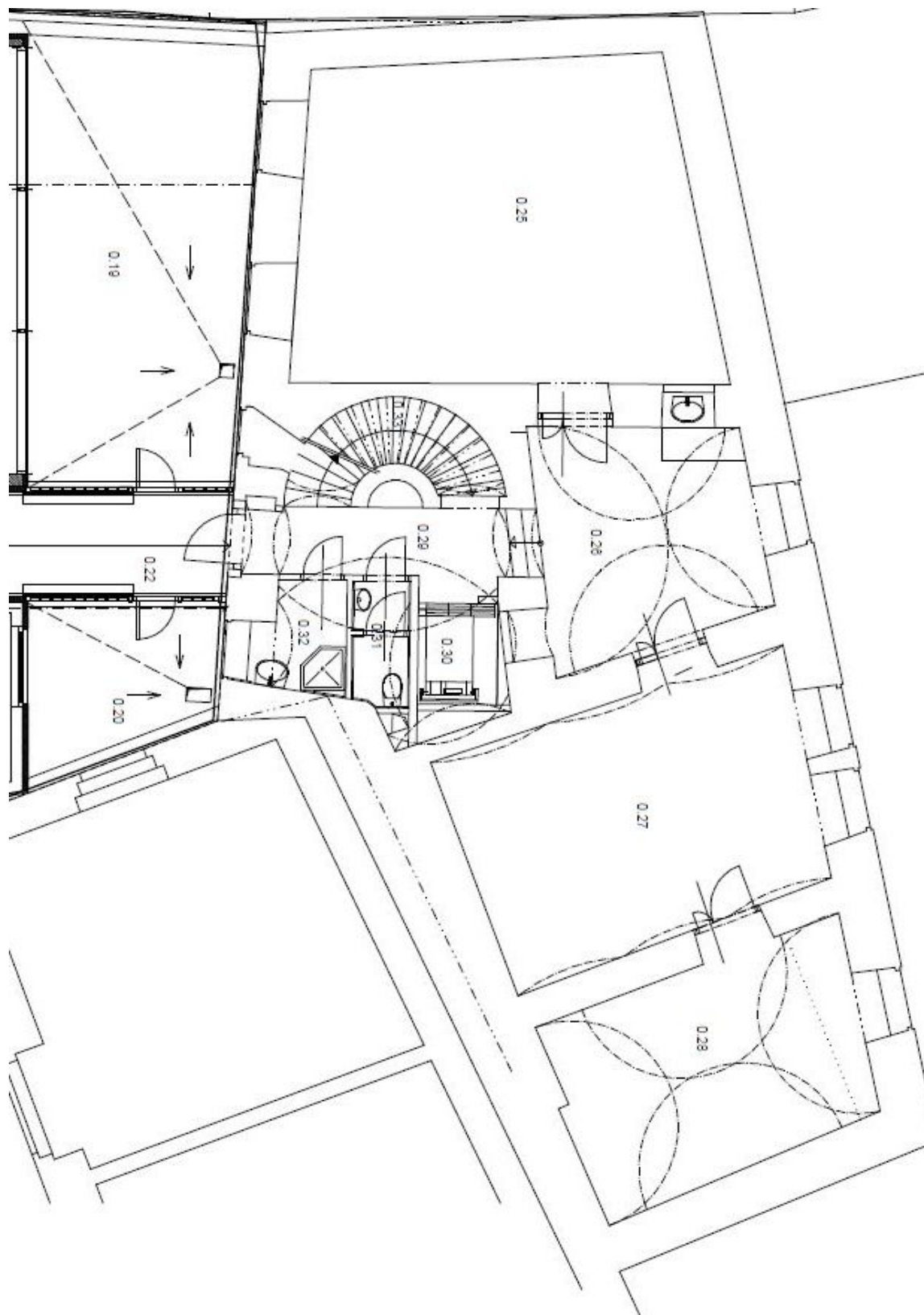
Rental and service charges listed without VAT. Lessee pays no commission.



Office building

Prague 1, Staré Město, Národní

Rented

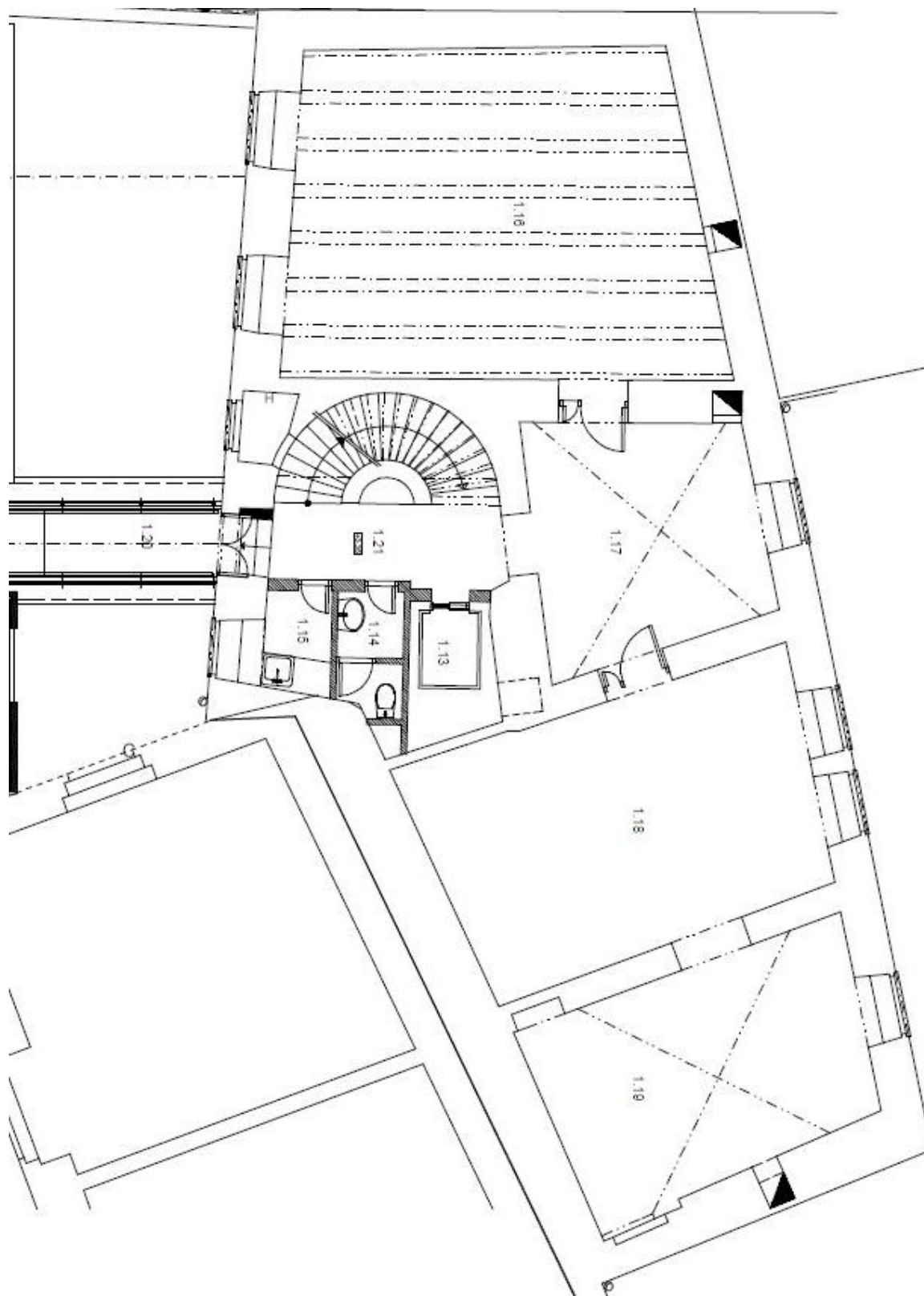




Office building

Prague 1, Staré Město, Národní

Rented

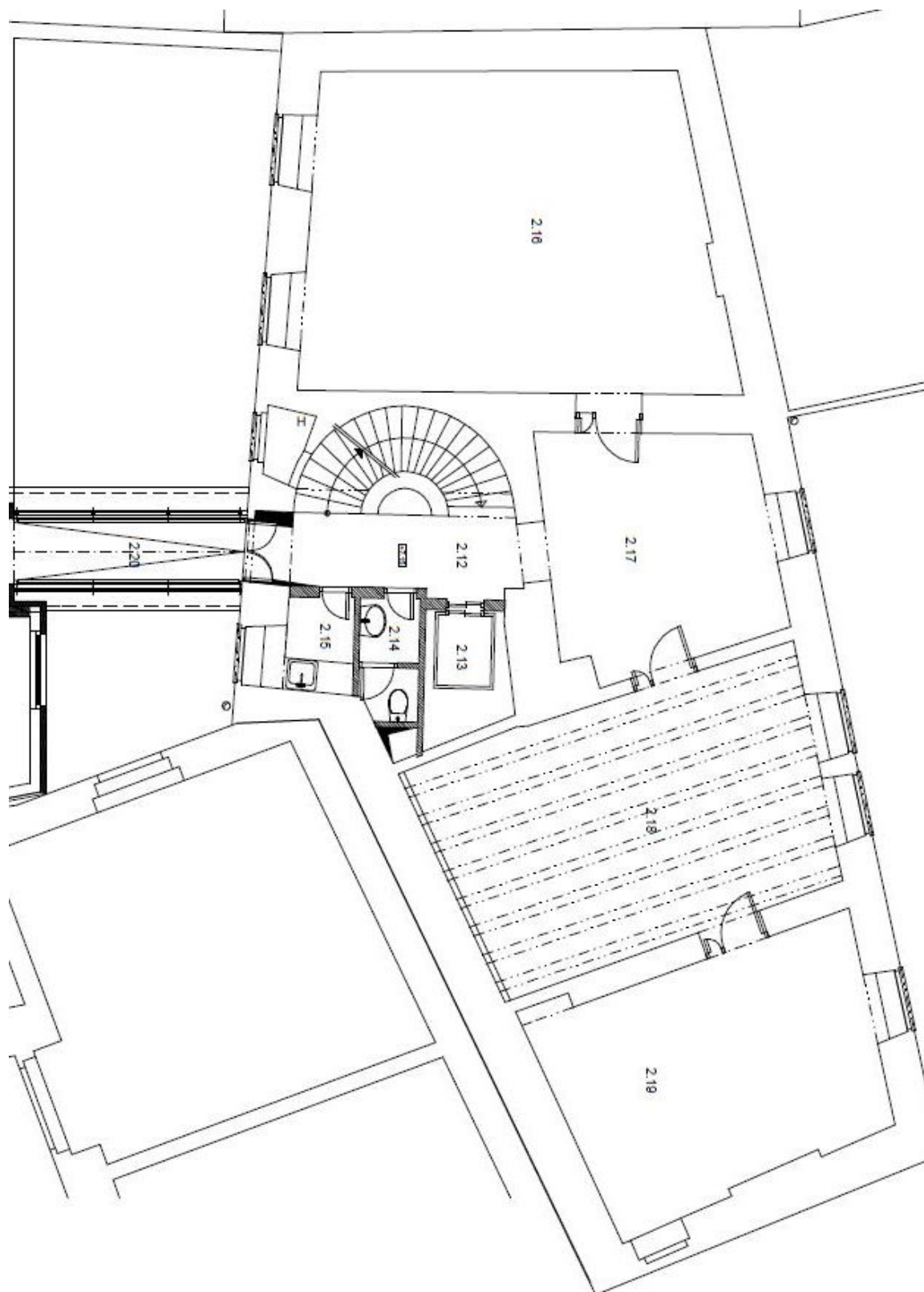




Office building

Prague 1, Staré Město, Národní

Rented





Office building

Prague 1, Staré Město, Národní

Rented

