



Office space

Rented

Praha 4, Krč, Antala Staška



**Office space**

Praha 4, Krč, Antala Staška

Rented

Service price	125 CZK monthly per m ²
Available area	275 m ²
Cellar	-
Parking	EUR 120 / ps / month
PENB	B
Reference number	16586

Office premises for rent in office building which is easy to get to, no matter how you choose to travel. Strategically located above the Budejovická metro station (C line) and only two minutes drive from the city arterial road, it provides excellent access to both central Prague and national motorway network. Offices benefits from location adjacent to shopping centre, nearby facilities which include supermarket, restaurants, cafés, shops, solarium and banks - all within two minutes walk. Sports facilities and hotels are also within walking distance.

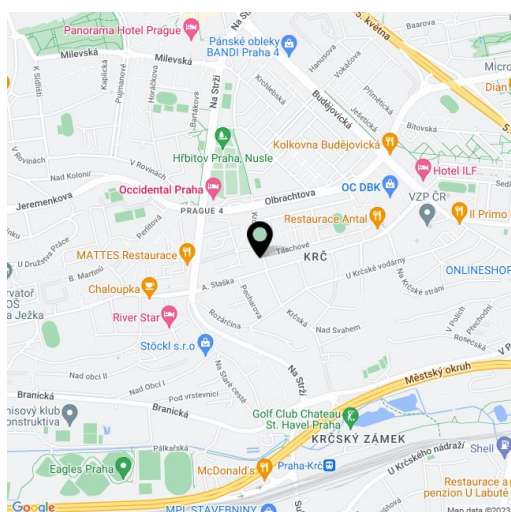
Location:

Office building is easy to get to, no matter how you choose to travel. Strategically located above the Budejovická metro station (C line) and only two minutes drive from the city arterial road, it provides excellent access to both central Prague and national motorway network.

Features and Services:

- Access and security service 24/395
- Underground parking garage with 156 parking places
- Environmentally friendly air conditioning
- Raised floors, suspended ceilings
- Openable windows
- Security cameras in the garages and receptions
- Facility management in the building
- Sprinklers
- Openable windows
- External blinds
- Access to magnetic cards
- Central reception
- CCTV

Rental and service charges listed without VAT. Lessee pays no commission.

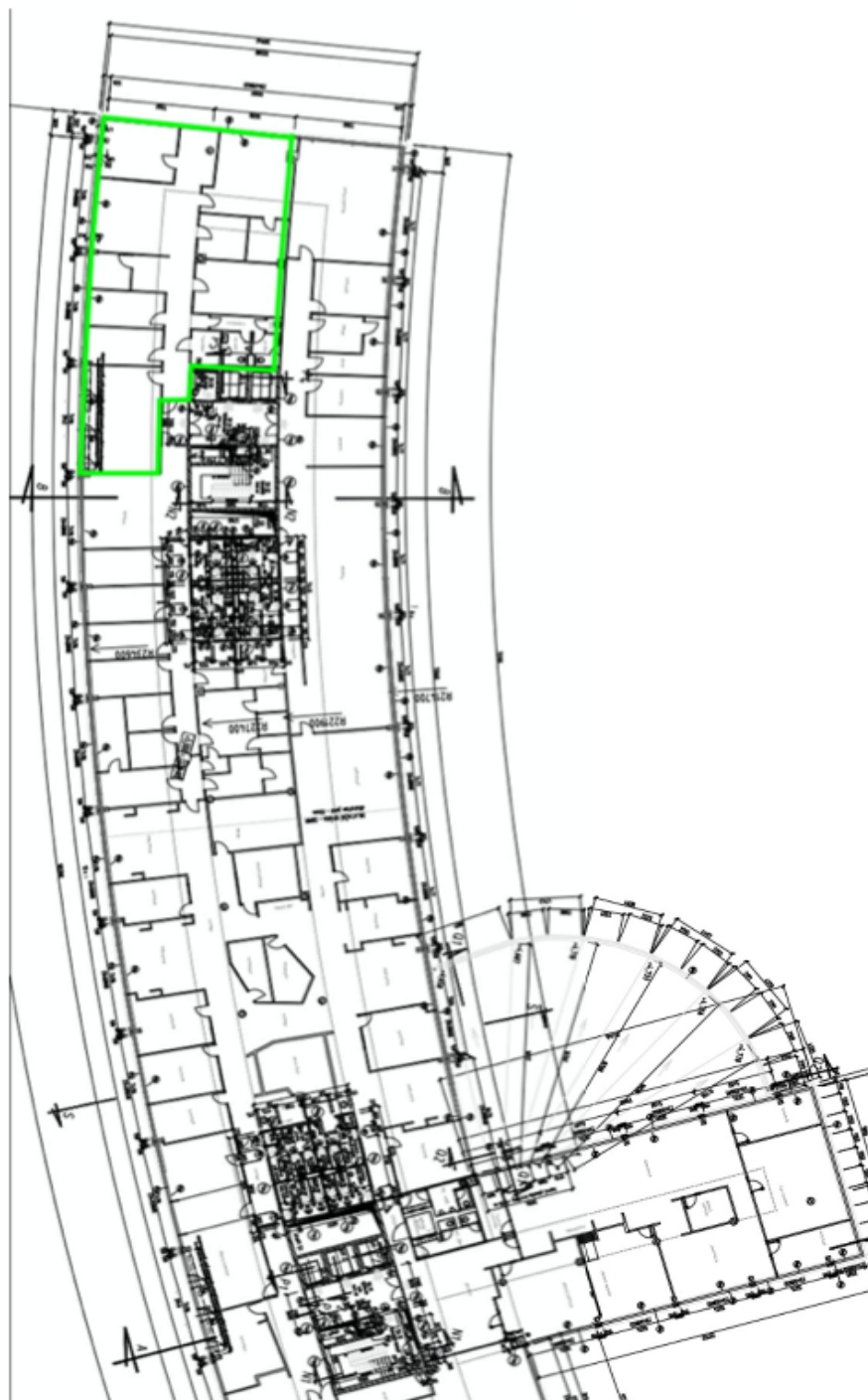




Office space

Praha 4, Krč, Antala Staška

Rented



275 m² 2. NP (1. patro)