



Office building

Prague 1, Nové Město, Panská

Ask for price





Office building

Prague 1, Nové Město, Panská

Ask for price

Service price	100 CZK monthly per m ²
Total building area	2 700 m ²
Tenant consumption	—
Parking	2 500 CZK
Parking service charges	—
Parking ratio	—
Certification	—
PENB	G
Reference number	16623

Office space for lease in a two-story palace near Wenceslas Square. The building dates from the first half of the 18th century and its construction involved leading Baroque builders led by František Maxmilián Kaňka and Giovanni Alliprandi. It was created by reconstructing two medieval houses. The dominant element is the Rococo gate, which is located at the entrance portal under the balcony. Interior paintings come from the Romantic period. The space is divided into several offices.

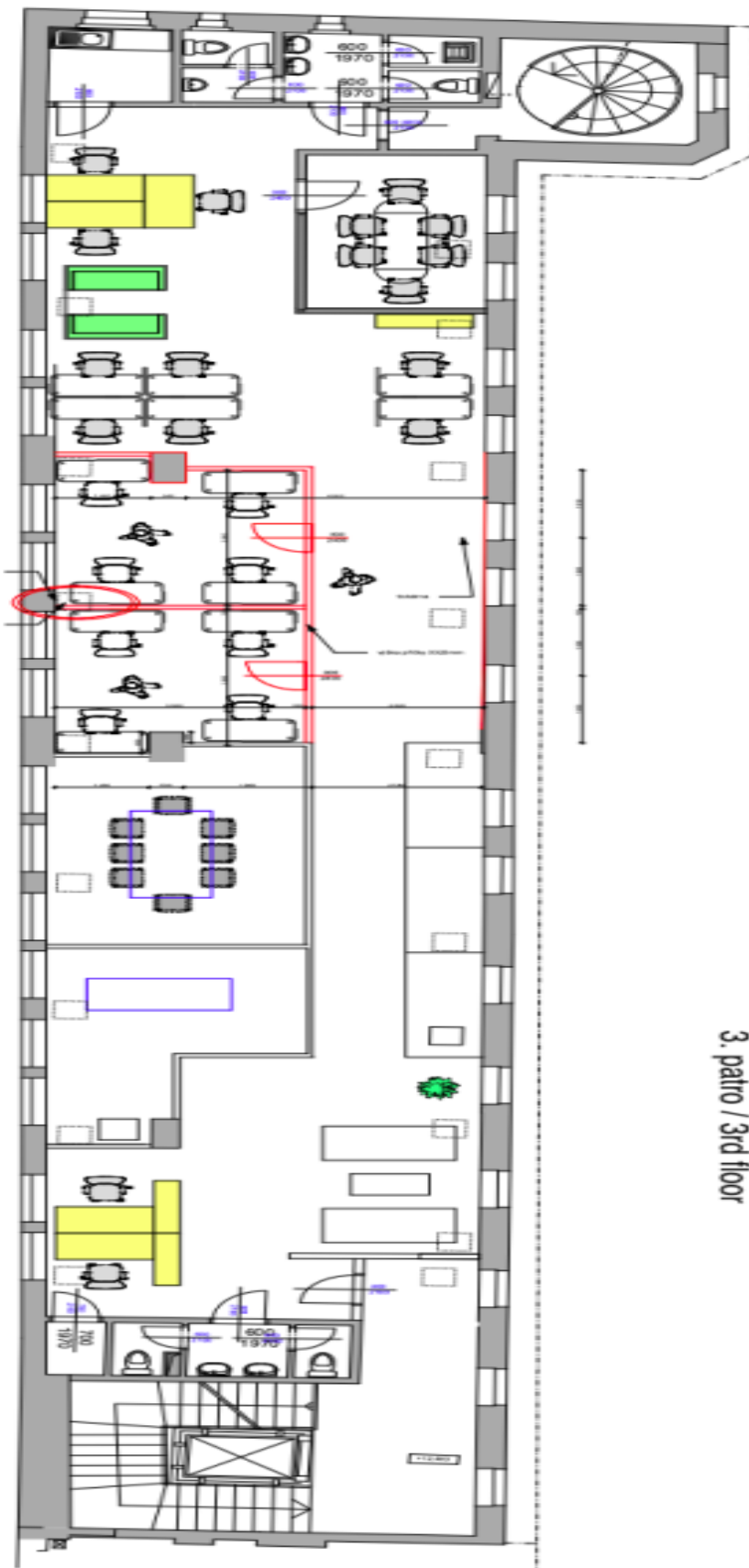
Location:

The building is located in an attractive area in the financial and business center of the city with private parking in the courtyard and good public transport access - the Můstek (line A, B) and Museum (line A, C) metro stations and the Václavské náměstí and Jindřišská tram stops.

Features and services:

Reception
24-hour security service
Kitchenette and toilet
Warehouse space
Parking
Elevator
Air-conditioning

Rental and service charges are listed without VAT. Lessee pays no commission.



3. patro / 3rd floor