



House Eleven-bedroom (12+kk)

Sold

575 m², Prague 5, Hlubočepy, Nad Pomníkem





House Eleven-bedroom (12+kk)

Sold575 m², Prague 5, Hlubočepy, Nad Pomníkem

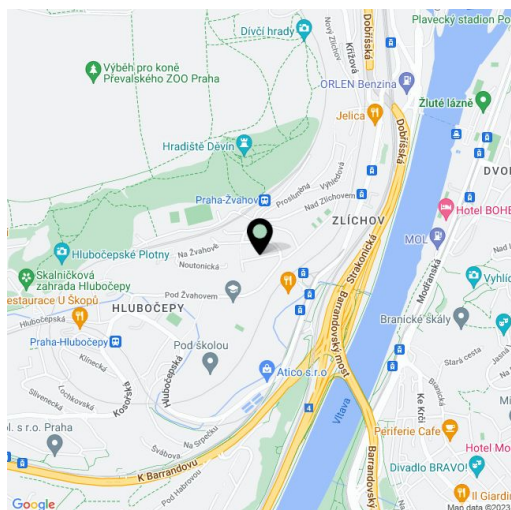
Usable area	575 m ²
Plot	877 m ²
Foot print	169 m ²
Garden	708 m ²
Floor area	560 m ²
Terrace	15 m ²
Parking	-
Cellar	Yes
PENB	G
Reference number	16624

Three-story 1930's villa with a large landscaped garden complete with mature trees, situated in a residential area near Prokopské údolí Valley.

The interior of the house was renovated in 2003; the house is now used as three separate flats on each floor (4+kk, 4+kk, 2+kk plus gallery). Sauna + storage + garage for 2 cars and one-bedroom unit in the basement.

Quiet residential location, minutes from Prokop Valley, easy access to shopping and entertainment in Anděl and the city center.

Interior 560 m², foot area 169 m², garden 708 m², plot 877 m².

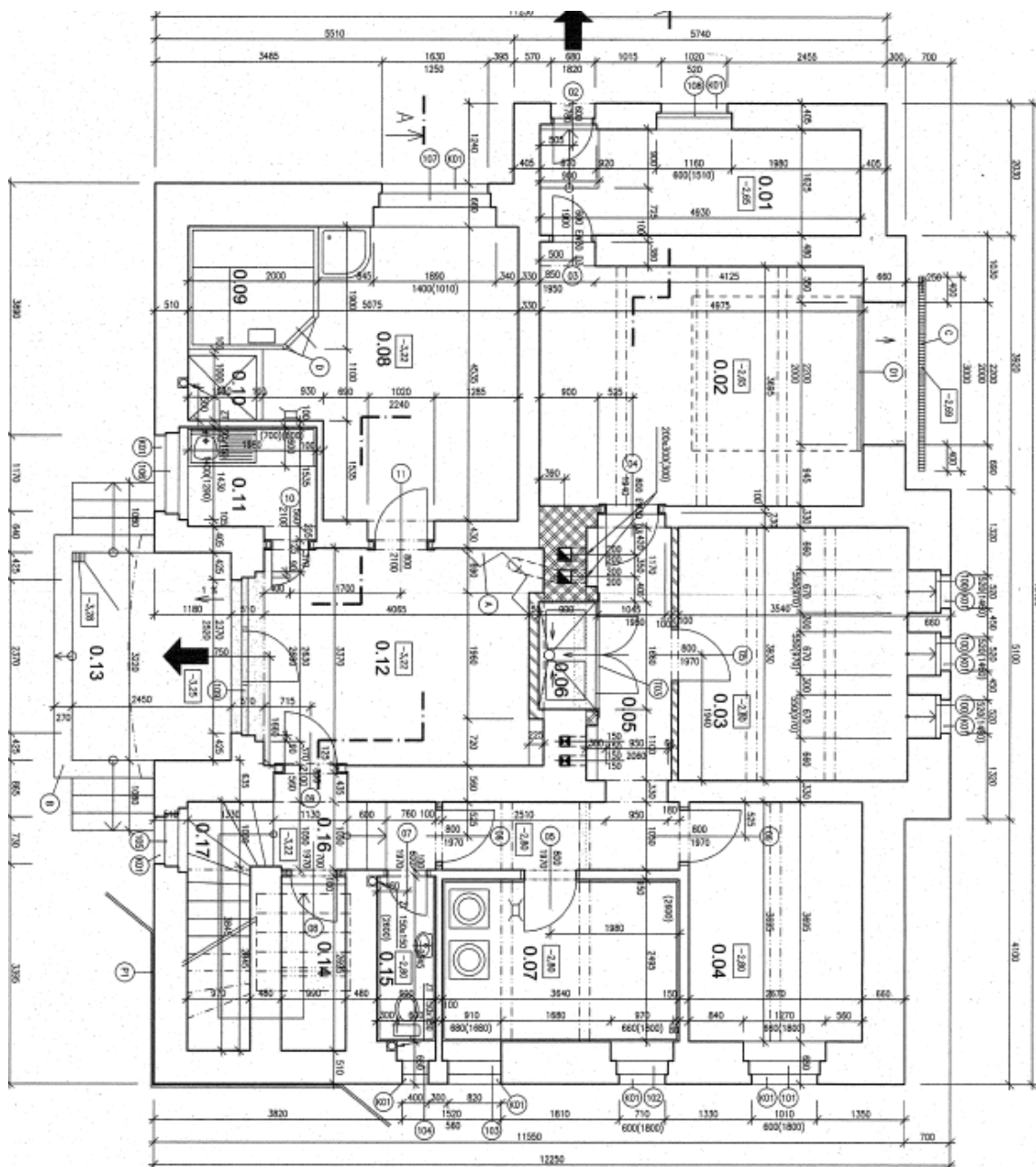




House Eleven-bedroom (12+kk)

575 m², Prague 5, Hlubočepy, Nad Pomníkem

Sold

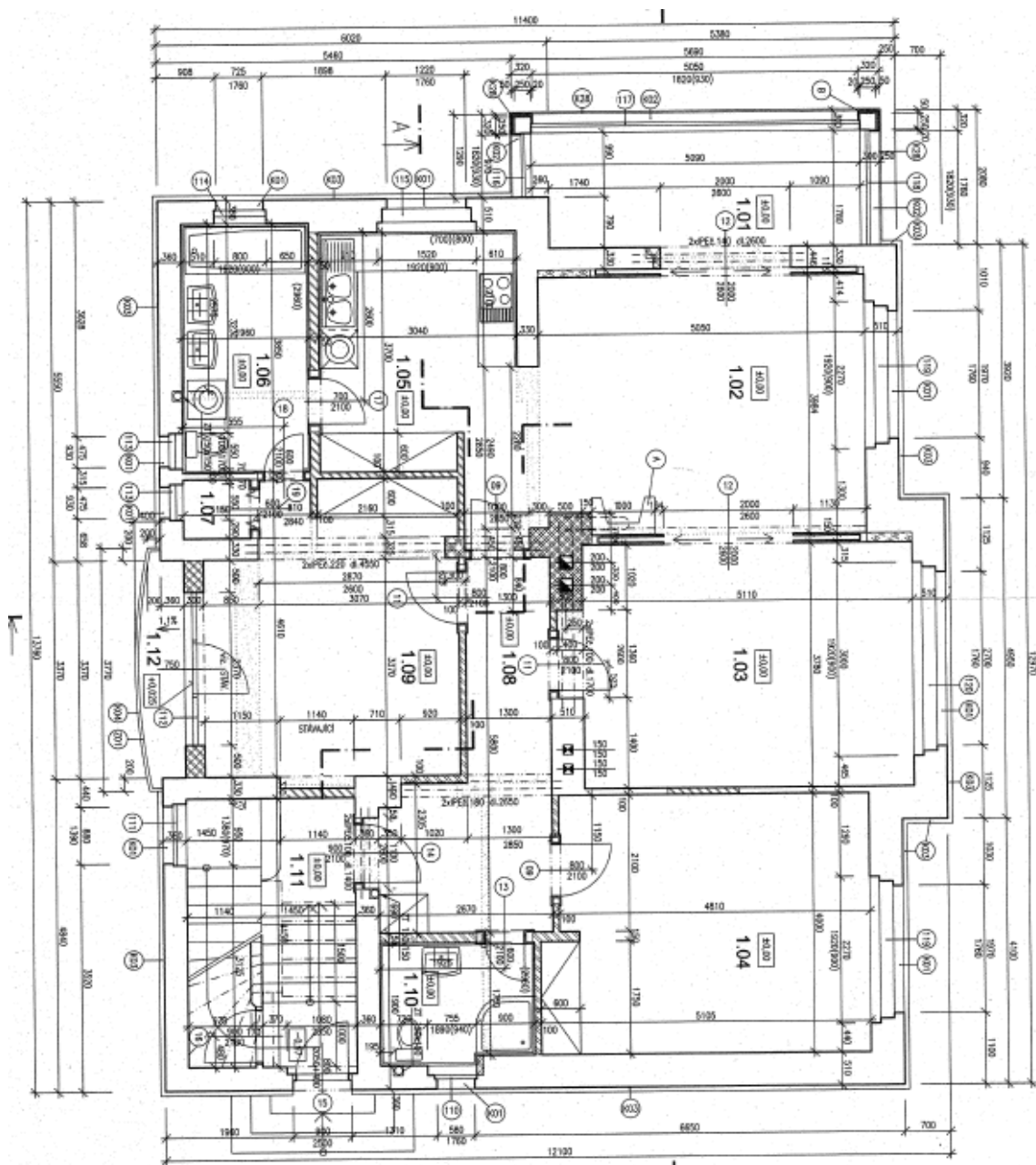




House Eleven-bedroom (12+kk)

575 m², Prague 5, Hlubočepy, Nad Pomníkem

Sold

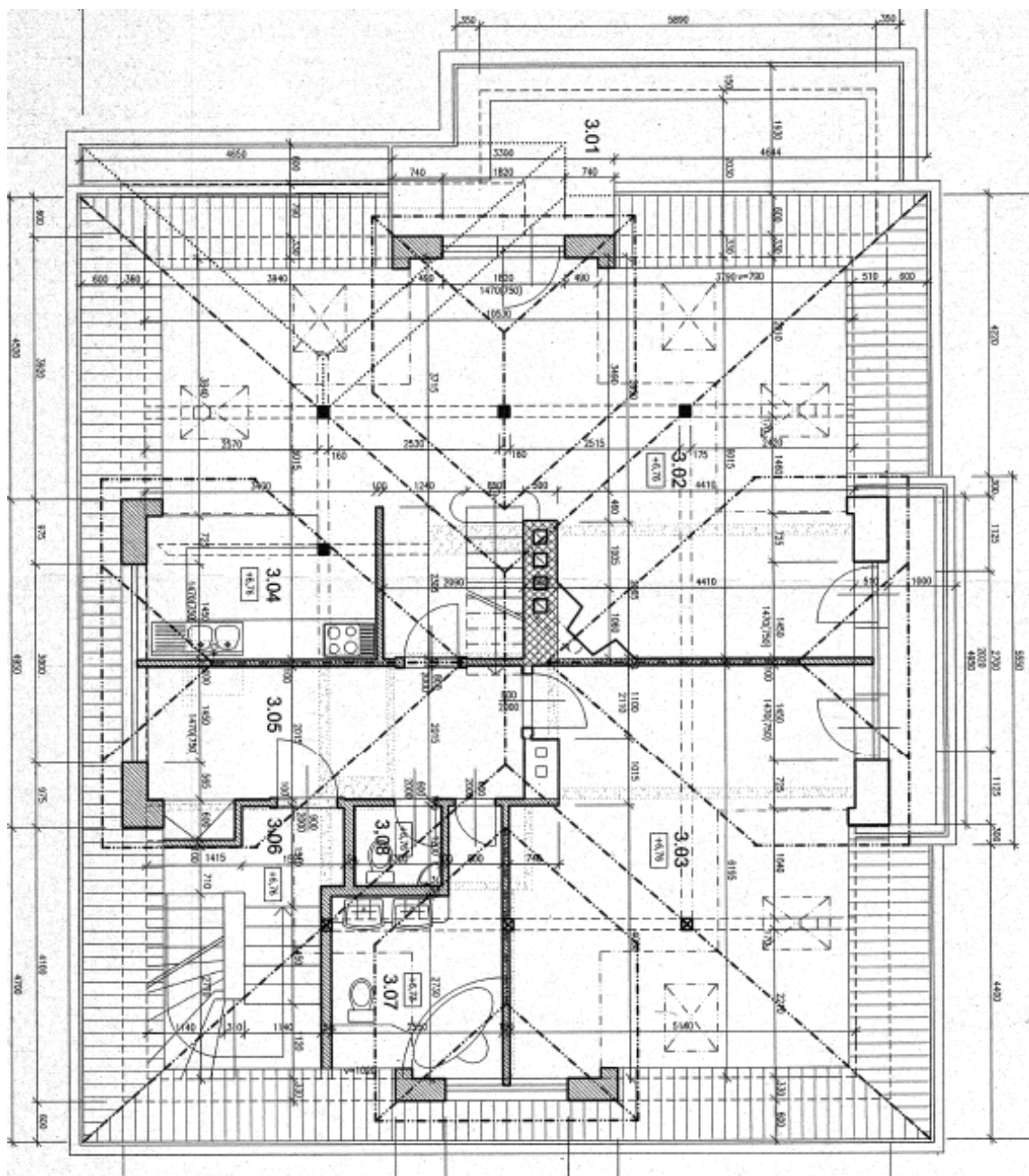




House Eleven-bedroom (12+kk)

Sold

575 m², Prague 5, Hlubočepy, Nad Pomníkem





House Eleven-bedroom (12+kk)

575 m², Prague 5, Hlubočepy, Nad Pomníkem

Sold

