



Office building

Prague 5, Smíchov, Strakonická

Rented



**Office building**

Prague 5, Smíchov, Strakonická

Rented

Service price	130 CZK monthly per m ²
Total building area	1 116 m ²
Tenant consumption	—
Parking	65 EUR
Parking service charges	—
Parking ratio	—
Certification	—
PENB	A
Reference number	16632

Modern administrative and commercial building, well visible on the arrival to Prague 5 in the direction of Smíchov. The building offers quality office space for lease in Prague 5 with excellent visibility and views of Prague Castle and Vyšehrad. Possibility to use a private fitness center.

Location:

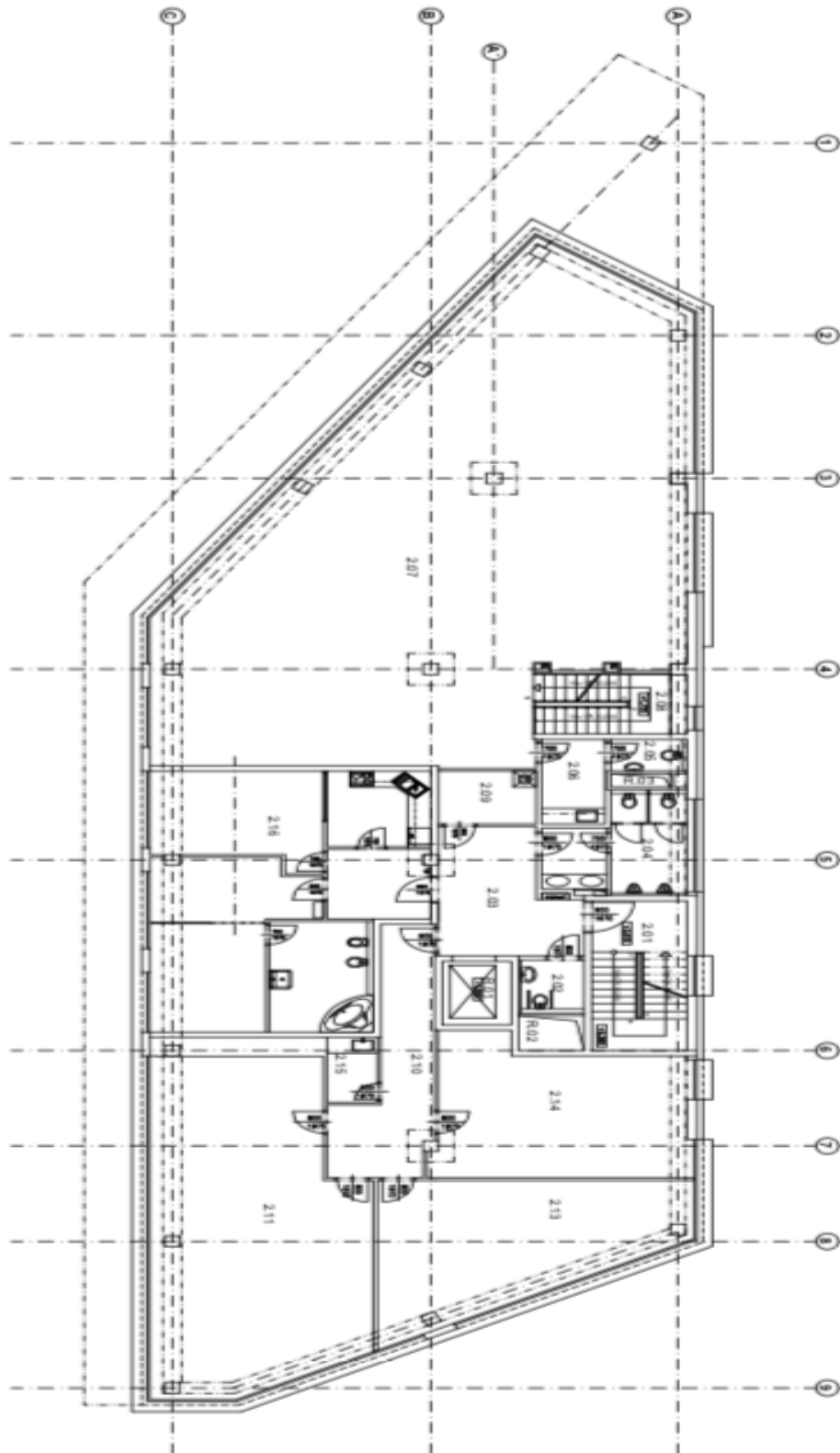
Great transportation connections – less than 4 minutes' walk from the Smíchovské nádraží (line B) metro station, tram, bus and train station. International Václav Havel airport reachable within 20 minutes. All essential services within walking distance (post office, shops, restaurants, hotels, pharmacy, gas station, fitness center, in-door golf, tennis, squash, swimming pool, etc.).

Facilities and services:

- Central reception
- Concierge services
- 24/7 security guard
- Shared electricity
- Heating common areas
- Drain water drainage
- Cleaning and maintenance of common areas
- Joint municipal waste disposal
- Private fitness center

Rental price EUR 5.90/m²/month for the first month of lease.

Rental and service charges listed without VAT. Lessee pays no commission.



PUĎORYS 2.NP