



Apartment One-bedroom (2+kk)

Rented

59 m², Prague 5, Smíchov, Ke Klimentce





Apartment One-bedroom (2+kk)

Rented

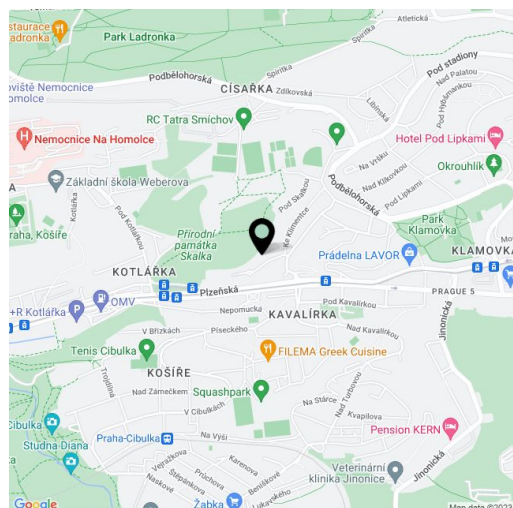
59 m², Prague 5, Smíchov, Ke Klimentce

Total area	90 m ²
Floor area*	59 m ²
Terrace	31 m ²
Garden	62 m ²
Parking	Possible to rent a garage parking at CZK 1,000/month.
Garage	Yes
Cellar	Yes
PENB	G
Reference number	1664
Available from	Immediately

Highly benefiting from a 62 m² garden, this furnished 1-bedroom flat on the upper ground floor of a modern building with a shared garden, camera system, and underground parking. Located in a quiet Prague 5 residential neighborhood, just a few minute drive to the Anděl commercial and entertainment center and metro, a minute walk to trams at Plzeňská street, and convenient to the French School and Ladronka Park.

The interior includes living room with a fully fitted open kitchen and south terrace and garden access, one bedroom with built-in wardrobes and garden access, bathroom with tub and toilet, guest toilet, and entry hall with built-in wardrobes.

Floating floors and tiles, security entry door, outdoor security blinds, vertical blinds, awning, dishwasher, alarm, video entry phone, cellar; bike and pram storage in the building. One large solid garage parking space at CZK 1,000/month. Common building charges and deposit for utilities CZK 4,500/month.



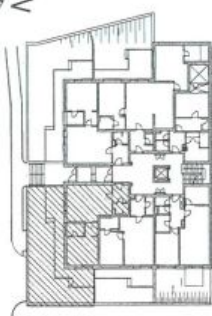
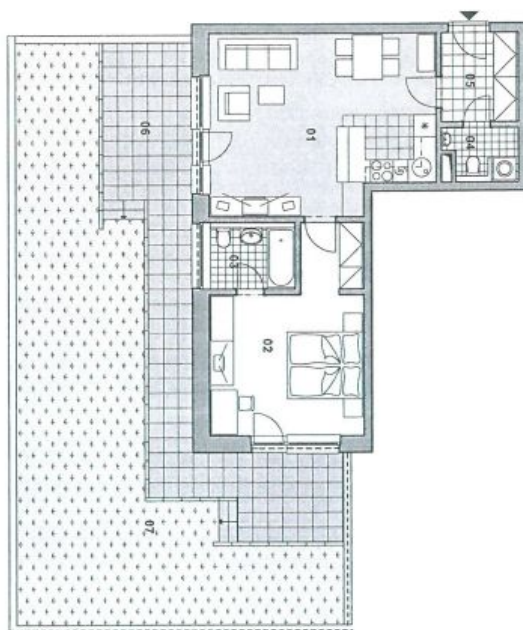
* Area of the unit according to the Civil Code. The area consists of the sum total area of the entire unit bounded by perimeter walls.



Apartment One-bedroom (2+kk)

59 m², Prague 5, Smíchov, Ke Klimentce

Rented



1. PODLAŽÍ



2+KK ■ BYT 3	
UŽITNÁ PLOCHA / NET AREA	m ²
01 OBÝVAČI POKOJ / LIVING ROOM	28,3
02 LOŽNICE / BEDROOM	19,0
03 KOUPELNA / BATHROOM	4,1
04 WC / TOILET	2,8
05 CHODBA / CORRIDOR	5,3
VNITŘNÍ PLOCHA / INT. TOTAL AREA	59,5
06 TERASA / TERRACE	30,7
07 ZAHŘADKA / GARDEN	61,9
PLOCHA CELKEM / TOTAL AREA	152,1