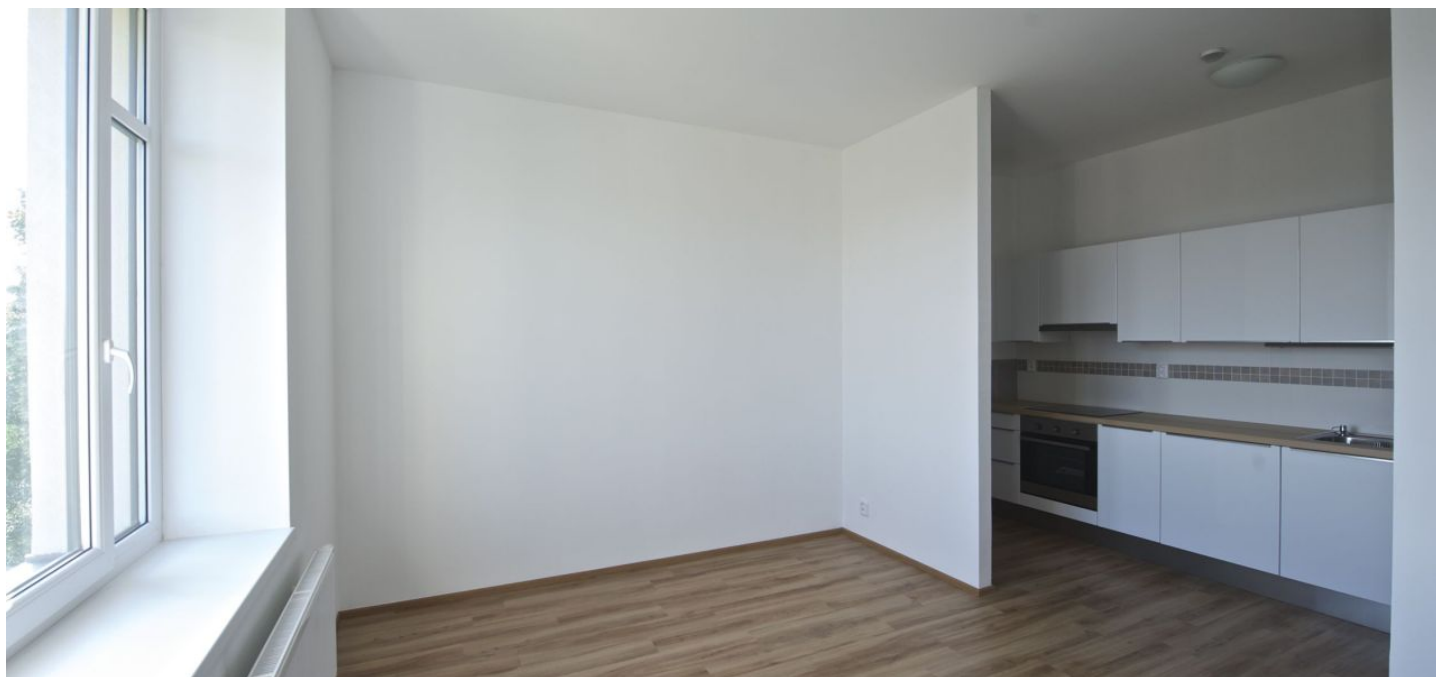




Apartment One-bedroom (2+kk)

€ 486 | CZK 12 000

40 m², Prague 8, Libeň, Zenklova





Apartment One-bedroom (2+kk)

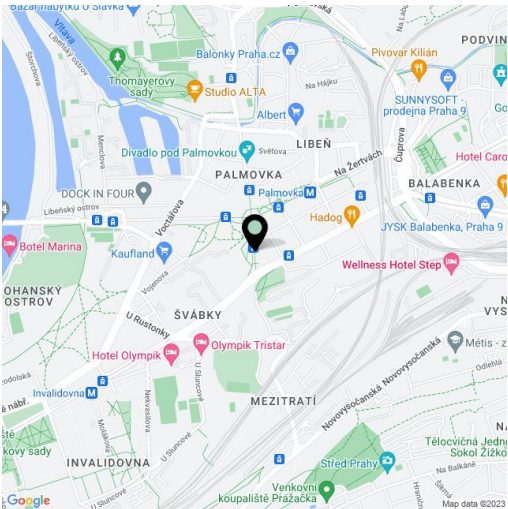
€ 486 | CZK 12 000

40 m², Prague 8, Libeň, Zenklova

Total area	40 m²
Parking	-
Cellar	-
PENB	G
Reference number	16671
Available from	Immediately

Brand new 1-bedroom apartment situated on the upper ground floor of a newly completely refurbished building with garage parking and camera system. Located two short tram stops from Kobylisy metro station, next to a tram stop, and a short walk from an outdoor swimming pool. Convenient to the natural reserve Havráňka, Čimický háj and Velká Skála, area with very good public amenities incl. shopping, school, kindergarten, theaters, bank and restaurants.

The interior includes one bedroom, living room, a fully fitted open kitchen, shower bathroom with toilet, and an entry hall.



Green views, vinyl and tile floors, security door, wardrobes, washer, dishwasher, microwave, audio entry phone, alarm, electronic card entry to the building. No lift. Can be rented furnished for a higher rent. Common building charges CZK 1500/month plus CZK 500/person/month. Electricity is billed separately.

* Area of the unit according to the Civil Code. The area consists of the sum total area of the entire unit bounded by perimeter walls.