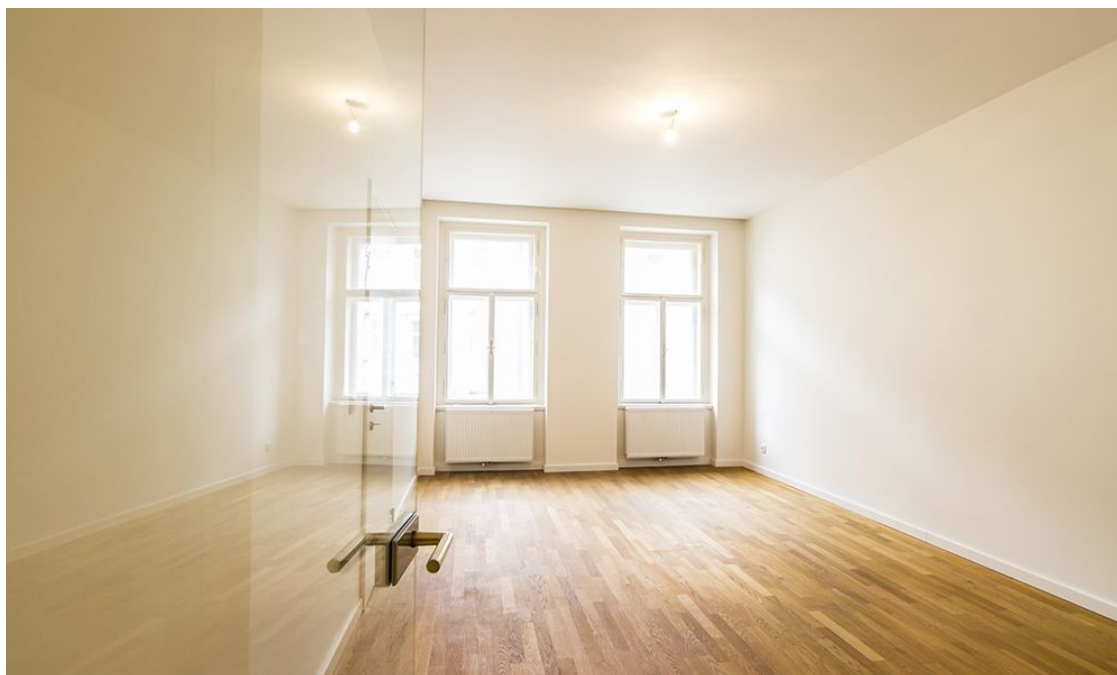




## Apartment Two-bedroom (3+1)

Rented

78 m<sup>2</sup>, Prague 7, Bubeneč, Šmeralova





## Apartment Two-bedroom (3+1)

Rented

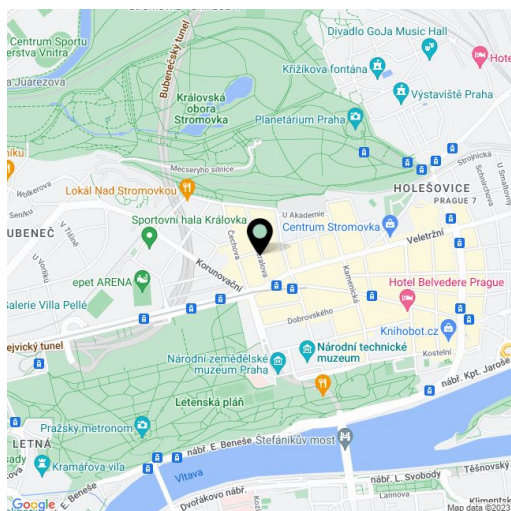
78 m<sup>2</sup>, Prague 7, Bubeneč, Šmeralova

Total area	78 m <sup>2</sup>
Parking	-
Cellar	-
PENB	G
Reference number	16676
Available from	Immediately

Brand new fully refurbished good quality 2-bedroom apartment on the second floor of a completely newly reconstructed building with a lift. Located in a quiet street steps from Stromovka Park, the largest park in Prague, a 15 minute walk to the center through another popular Prague park - Letná, and not far from the Prague Castle. Tram connections (tram stop one minute from the building), convenient to Hradčanská (line A) and Vltavská (line C) metro stations.

With preserved original features, the interior includes a fully fitted eat-in kitchen, living room, two bedrooms, bathroom with double sink and tub, a guest toilet, and an entry hall.

Parquet floors and tiles, security door, gas boiler, audio entry phone. Common building charges CZK 600/person/month. Gas and electricity used in the flat CZK 3000 per month.



\* Area of the unit according to the Civil Code. The area consists of the sum total area of the entire unit bounded by perimeter walls.