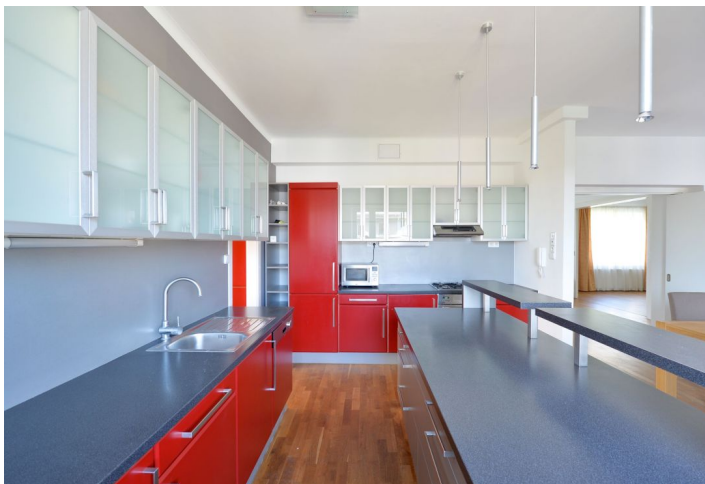




## Apartment Two-bedroom (3+1)

Rented

128 m<sup>2</sup>, Prague 6, Střešovice, Na Dračkách





## Apartment Two-bedroom (3+1)

**Rented**128 m<sup>2</sup>, Prague 6, Střešovice, Na Dračkách

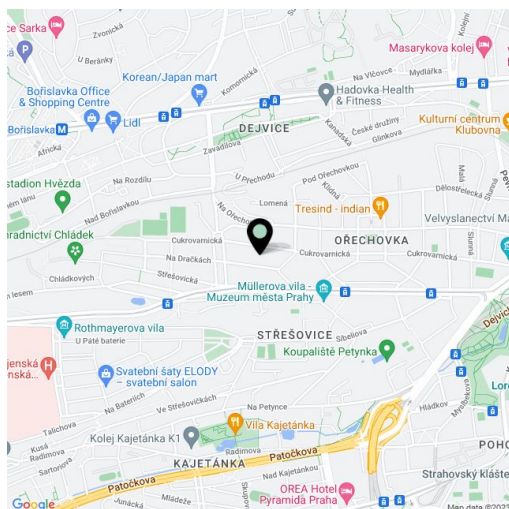
|                  |                    |
|------------------|--------------------|
| Total area       | 136 m <sup>2</sup> |
| Floor area*      | 128 m <sup>2</sup> |
| Balcony          | 8 m <sup>2</sup>   |
| Parking          | Garage space.      |
| Garage           | Yes                |
| Cellar           | -                  |
| PENB             | G                  |
| Reference number | 16745              |
| Available from   | Immediately        |

Surrounded by greenery and benefiting from a sauna, terrace, loggia and a winter garden, this 2-bedroom 2-bathroom flat is situated on the first floor of a renovated semidetached villa with a nicely landscaped garden.

Located in the heart of the exclusive and highly sought after Ořechovka residential neighborhood with grand villas, within easy reach of the Prague Castle, with very good connection to the city center and the airport, a few minutes from Dejvická and Hradčanská metro.

The interior features a fully integrated modern kitchen with loggia access, living room, dining room / bedroom, master bedroom with terrace facing the garden, winter garden (could be study), sauna, shower bathroom, bathroom with tub, two toilets, pantry, storage room, and entry hall.

Wood floors and tiles, built-in wardrobes, dishwasher, gas boiler, satellite dish, audio entry phone. Garage parking space included. Common building charges and utilities approximately CZK 3000/month. Available from August 2016.



\* Area of the unit according to the Civil Code. The area consists of the sum total area of the entire unit bounded by perimeter walls.