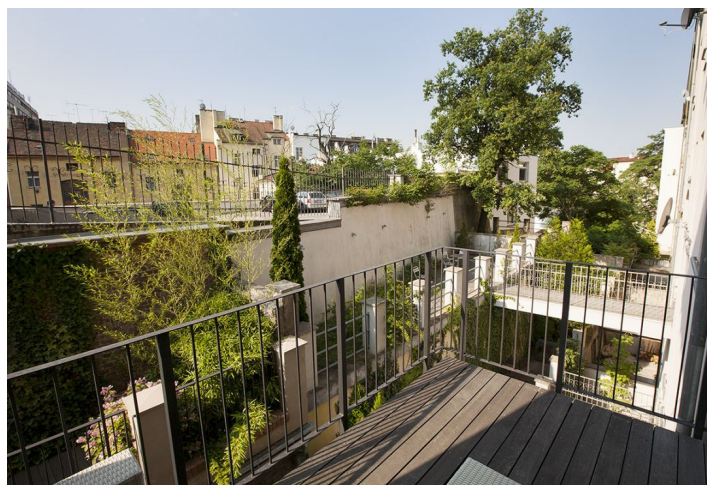
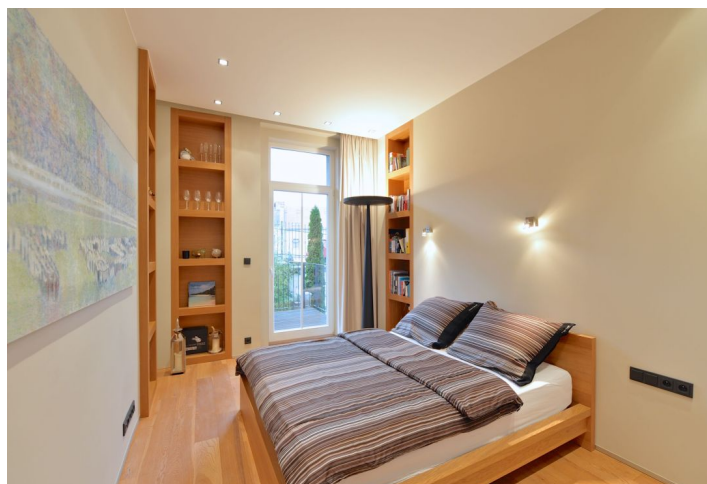




Apartment One-bedroom (2+kk)

Sold

68 m², Praha 3, Žižkov, Řehořova





Apartment One-bedroom (2+kk)

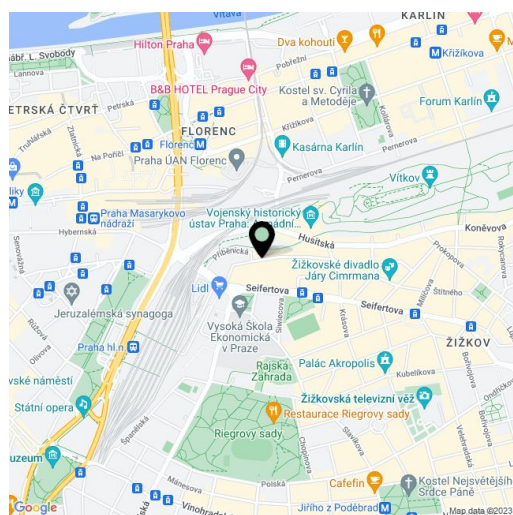
Sold68 m², Praha 3, Žižkov, Řehořova

Total area	72 m ²
Floor area*	68 m ²
Terrace	4 m ²
Parking	-
Cellar	-
PENB	G
Reference number	16761

Architect designed 1-bedroom apartment in a newly reconstructed classic building with a lift. Short walk to the city center (one tram stop to Náměstí republiky and Hlavní nádraží metro stations), and close to the Vítkov and Parukářka parks.

With quality materials and finishes, the flat features fully fitted open plan kitchen with integrated appliances, living room, bedroom, bathroom, and walk-in closet. Custom made furniture, wood floors, French window, recessed lighting, alarm that can be connected to the security agency. Design by the renowned Donlic studio. Interior 68 m², terrace 4 m².

2 minute walk from tram stops, just 5 minute tram journey to the city center. Riegrovy sady Park within walking distance.



* Area of the unit according to the Civil Code. The area consists of the sum total area of the entire unit bounded by perimeter walls.



Apartment One-bedroom (2+kk)

68 m², Praha 3, Žižkov, Řehořova

Sold

