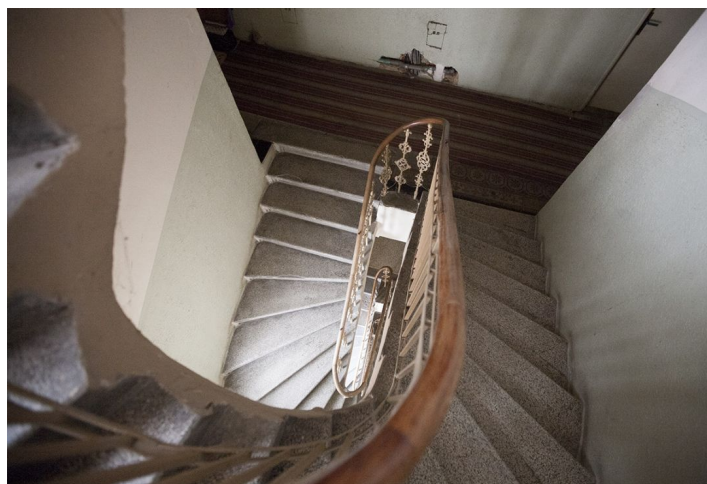




# Apartment building

Sold

895 m<sup>2</sup>, Prague 4, Nusle, Spytihněvova



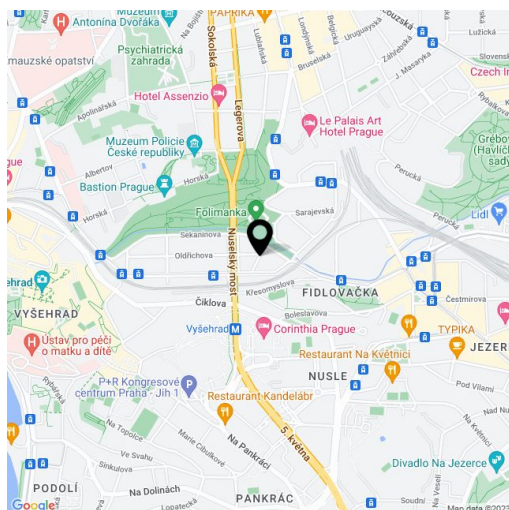


## Apartment building

**Sold**895 m<sup>2</sup>, Prague 4, Nusle, Spytihněvova

Total gross floor area of the building	895 m <sup>2</sup>
Total net leasable area of the building	895 m <sup>2</sup>
Plot	317 m <sup>2</sup>
Foot print	317 m <sup>2</sup>
Parking	-
Cellar	Yes
PENB	G
Reference number	16790

**Investment opportunity** in the form of an apartment building suitable for complete renovation with a **valid building permit**. The building offers **5 commercial units, 13 apartments, 2 studios**. 4 apartments are occupied by regulated tenants, other facilities are free or leased with **3 months' notice**. Pleasant residential location close to Botičský potok creek and park. Usable area of 895 m<sup>2</sup>, built area 317 m<sup>2</sup>.

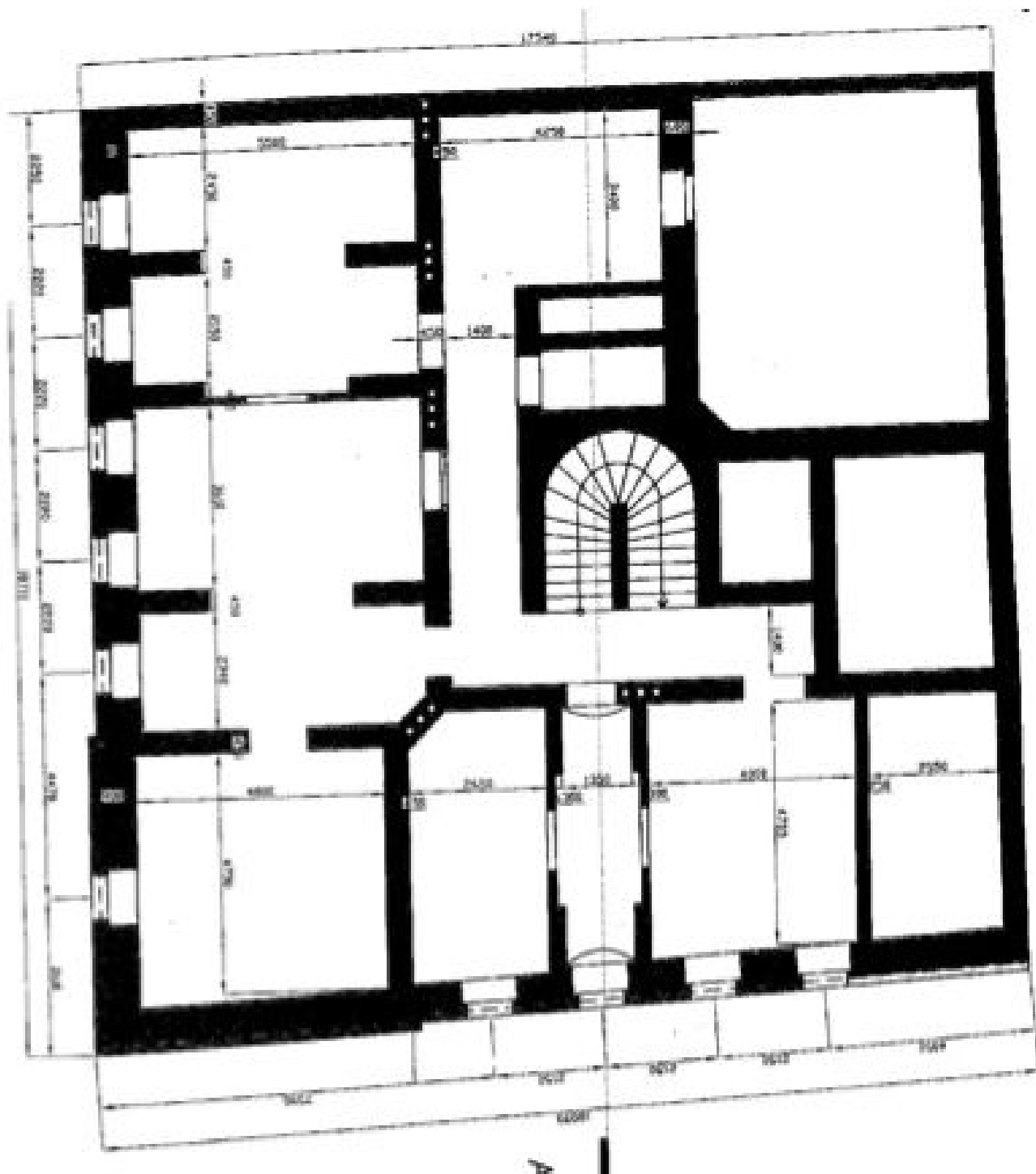




# Apartment building

895 m<sup>2</sup>, Prague 4, Nusle, Spytihněvova

Sold

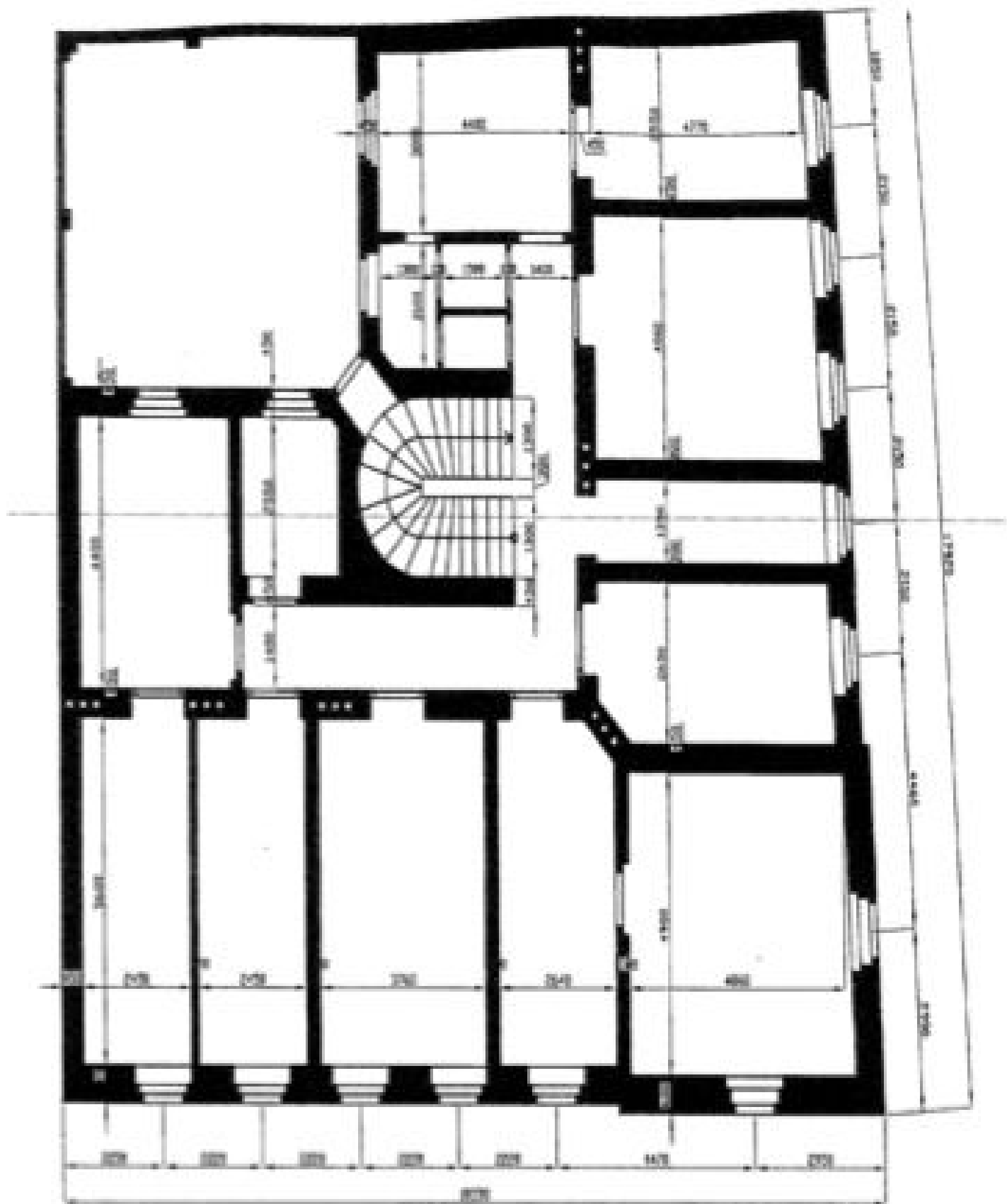




# Apartment building

895 m<sup>2</sup>, Prague 4, Nusle, Spytihněvova

Sold









# Apartment building

895 m<sup>2</sup>, Prague 4, Nusle, Spytihněvova

Sold

